

# HAMILTON COUNTY JUVENILE COURT



## 2007 ANNUAL REPORT

JUDGE THOMAS R. LIPPS

JUDGE KARLA J. GRADY



# TABLE OF CONTENTS

	PAGE
ORGANIZATIONAL STRUCTURE	4-7
Overview	4-5
Organizational Chart	6
Judges and Administration	7
DEPARTMENT OF COURT SERVICES	8-15
Intervention Unit	9-10
Community Services Work Detail	10
Probation	11-14
Psychology Department	15
SUPPORT SERVICES	16-17
Finance Department	16
Human Resource Department	16
Personnel Department	16-17
Training Department	17
Information Services	17
Operations Department	18
CASE MANAGEMENT	19-26
Docketing / Case Management Department	19
Volunteer Referee Program	19-20
Clerk's Office	20
Juvenile Jurisdiction	20-24
Adult Jurisdiction	25-26
Security Department	26
MAGISTRATES	27-32
Unofficial Court Program	27
Unofficial Teen Court Program	27-28
Family Treatment Drug Court	29
Mediation	29-30
Individualized Disposition Docket	30-31
Pretrial Diversion Docket	31-32
Attendance Program	32
YOUTH CENTER	33-36
Operations Department	34
Housing Department	35
Medical Department	35
Programs and Services	35-36
HILLCREST TRAINING SCHOOL	37-43
Programs and Services Utilization	41-43

COSTS PER COPY \$3.05

## OVERVIEW

Hamilton County Juvenile Court has the responsibility to hear and determine all cases and issues concerning children in Hamilton County. Additionally, the Juvenile Court administers programs and facilities providing for the custody, care and rehabilitation of youth within its jurisdiction.

The types of cases appearing before the Juvenile Court include:

- Delinquency cases in which a youth is charged with what would be a crime for an adult.
- Dependency cases in which it is alleged that a child has been abused or neglected by a parent or other person.
- Paternity/Child Support cases to determine parentage and collect support.
- Traffic cases in which a juvenile is charged with violating traffic law.
- Custody cases in which the parties disagree concerning with whom the child should live or visit.
- Adult cases in which there is an issue of contribution to a child's delinquency or failure to send a child to school.
- Various other cases which impact the best interests of children.

Two judges direct the work of the Court. In 2007, those judges were Administrative Judge Thomas R. Lipps and Judge Karla J. Grady. The judges, along with the Court Administrator, Mark H. Reed, oversee all Court operations, including:

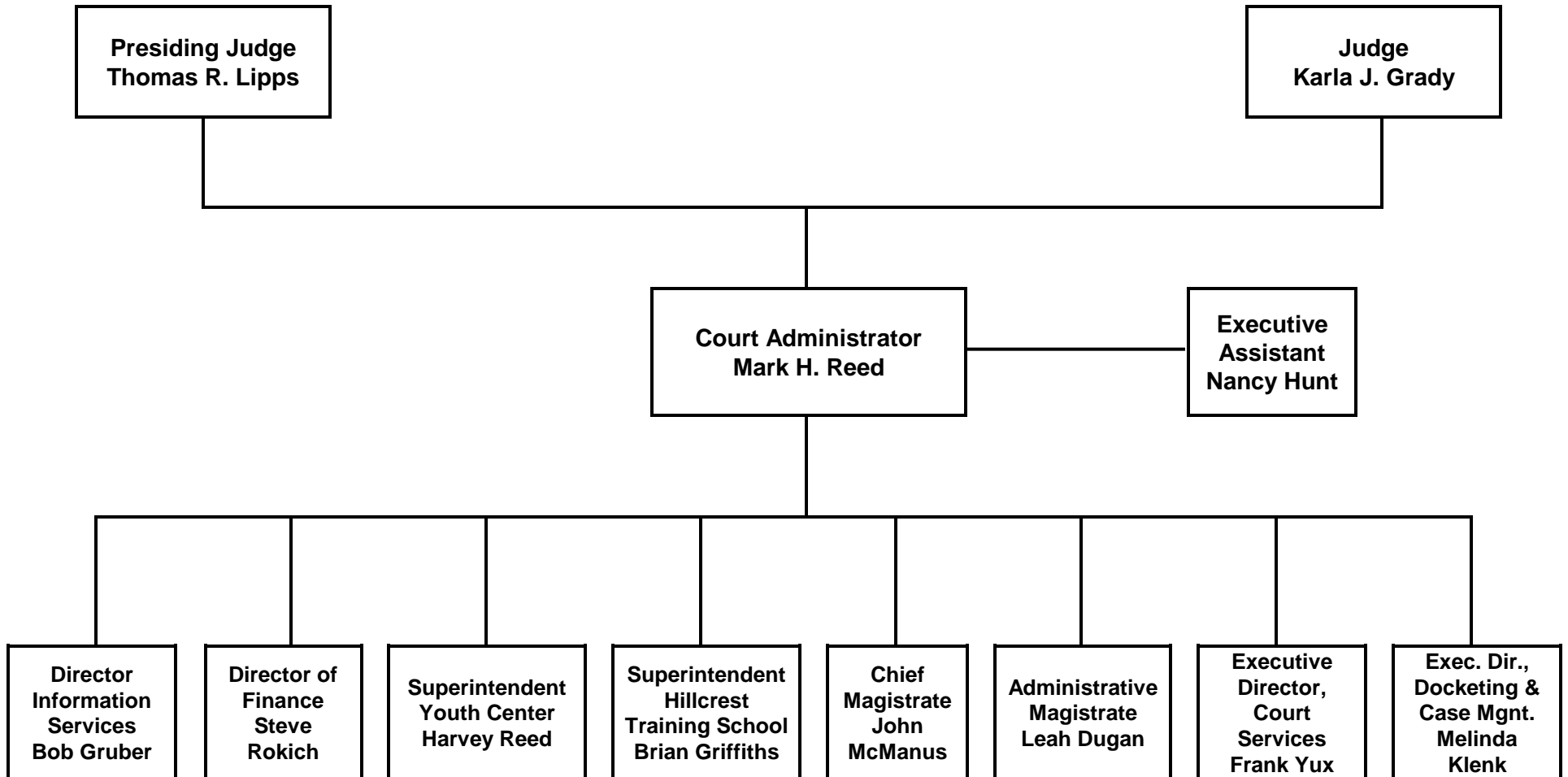
- Department of Docketing and Case Management comprised of the Clerk's Office, Docketing Departments, Record Room and Security.
- Magistrates Department comprised of 27 magistrates who hear a large volume of cases in various jurisdictional areas.
- Department of Court Services comprised of the Probation Department, Intervention Unit, and Work Detail.
- The Youth Center, a 160-bed secure detention center, housing youth in secure custody pending court hearings.
- Hillcrest Training School, a 142-bed residential treatment center for youth court-ordered into the program for violating the law.
- Various administrative departments encompassing the Office of Court Administrator, Administrative Magistrate, Personnel, Finance, Information Services, Operations and Training.

The Court also contracts with various placement and program services offered by child care agencies, including inpatient secure diagnostic services, shelter care housing children, custodial drug treatment centers, youth counseling programs, etc. Further, the Juvenile Court along with other official entities, have formed the Family and Children First Council to consolidate efforts, increase efficiency and improve service to families and children.

The Juvenile Court is fortunate to enjoy the services of many volunteers who give their time, expertise and money for the enhancement of children. Volunteer programs include over 30 community unofficial hearing officers where members of the legal profession deal with minor infractions, diverting the case from official charges. Volunteer chaplains provide spiritual guidance to youth held in the custody of the Court. An Advisory Council composed of citizens in the community directs services and funds to enhance court programs which cannot be funded by tax revenue to provide needy children with clothes and positive life experiences.

The National Council of Juvenile Court and Family Court Judges designated the Hamilton County Juvenile Court as the nation's first model court. Hamilton County programs are praised by the national judicial and correctional associations and in published reports. Judges and officials from around the nation and across the world have traveled to Cincinnati to observe our Court.

# Hamilton County Juvenile Court





Judge Thomas R. Lipps  
Administrative Judge



Judge Karla J. Grady



Court Administrator  
Mark H. Reed

## **DEPARTMENT OF COURT SERVICES**

---

The Department of Court Services is charged with the implementation of a wide variety of Court orders and services directed at prevention, intervention and rehabilitation. There are six separate departments within Court services: the Intervention Unit, Community Service / Work Detail, Probation and Service Grants and the Youth Center Psychology Clinic.. Services and programs in each of these areas work collaboratively and independently to provide services to youth and their families. Court Services uses general funds and specialized grants to fulfill its mission.

The Intervention Unit utilizes strategic brief therapy for at-risk families prior to formal introduction into the court system. It also accepts referrals from judges, magistrates and probation.

The Community Service / Work Detail program performs a wide range of community services. Youth are referred to the program as a result of their delinquent or unruly behavior. The City of Cincinnati Adopt-a-Block Program, the Cincinnati Zoo, schools and a variety of parks benefit from this program. The Community Service / Work Detail Program also collaborates with Hillcrest Training School to provide an educational component to assist youth in obtaining their General Education Diploma.

The Probation Department provides predisposition investigation reports and post-disposition probation services. The Department also provides specialized case supervision to address four specific categories of offenders, sex offenders, female probationers, probationers with mental-health diagnosis and offenders requiring intense supervision. A Specialized Services team works closely with probation staff in locating services for youth with complex multi-problem maladaptive behavior not served through traditional community services.

The Court Services Grants department monitors and assists in the annual application of the RECLAIM Ohio Grant, which provides funding for both Court personnel and offender services in Court Services. In addition, this department assists in the research, development, application and monitoring of federal, state and private grants.

The Psychology Clinic is to provide mental health evaluations for the Juvenile Court System at the request of judges, magistrates, probation officers, and both prosecuting and defense attorneys.



## INTERVENTION UNIT

The Hamilton County Juvenile Court Intervention Unit, a division of Court Services, serves families as the result of a child's rebellious or incorrigible behavior. Efforts are made to contact families within 24-48 hours of receiving the referral and schedule an appointment within 10 working days. If the parent(s) or guardian(s) are unwilling or unable to attend a session at the Intervention Unit, a family counselor will provide crisis intervention by telephone. It is the Intervention Unit's goal to provide direct treatment services to at least 10% of all families referred. During 2007, 13% of all cases closed had received ongoing treatment services. Cases in which the family made the first appointment, 40% returned for additional treatment sessions.

The duration of a single crisis-intervention session is typically 2-3 hours. Treatment sessions generally last 1-2 hours. Telephone interventions are provided to clients who do not utilize in-person services due to work schedules, transportation problems, lack of child care, disinterest in counseling, or improvement in the child's behavior. Such cases are monitored for 30 days or longer should problems arise again. Families are encouraged to maintain contact with the assigned counselor during this period; many may call for additional guidance even after the case is closed. There was an average of 7 contacts per case during 2007.

The First Time Runaway Program provides ongoing case management from the initial filing of the charge through final disposition of the case. Regular phone contact is maintained with the parent(s) or guardian(s). The Intake Coordinator offers guidance and supportive counseling throughout the process, and has the option to refer cases to the Family Counselors for ongoing services.

1250 cases were referred to the Intervention Unit during 2007. Substance abuse/dependency, physical and sexual abuse, and mental illness remain constant and significant factors affecting family functioning. Trends suggest that increasing numbers of children referred have had prior exposure to mental health services or psychiatric hospitalization. Minority populations represented 74% of youth referred; 54% of the total referrals were female. Ages of youth referred ranged from 5 through 17 years.

The Unit closed 1110 cases during 2007 and provided service to 64% of the families referred. Services included: First Time Runaway case management, single session interventions, ongoing treatment services, and telephone interventions. 27% of cases referred either did not schedule services or the youth's warrant remained active for over 3 months. 9% of families that scheduled a session failed to keep the appointment and did not reschedule. In many of these instances, Counselors scheduled several appointments with clients prior to case closure, encouraging families to utilize services.

## PROGRAM EVALUATION/RECIDIVISM RATES

The Intervention Unit assesses the effectiveness of services based upon re-involvement with the Court. Recidivism is defined as *any* subsequent official contact with the Court, but does not reflect whether there was an adjudication for the case. The results may be negatively skewed as counselors periodically encourage parents to pursue charges as a means of holding children accountable. In addition, minor status offenses and traffic offenses are not differentiated from delinquency charges. To provide a meaningful appraisal of positive outcome, the population was

drawn from closures dating from September 2000 to September 2007. A recidivism range within 3 months of case closure was used.

REFERRAL SOURCE	TOTAL CLOSED	NEW FILINGS	RECIDIVISM RATE
Dependency Court Magistrates	3	0	0%
Delinquency Court Magistrates	1052	374	36%
First Time Runaway Program	3,262	1,036	32%
Clerk's Office Unofficial Referrals	3,782	755	20%
Probation Department	473	181	38%
Township Unofficial Dockets	33	7	21%
Teen Court	4	1	25%
<b>TOTALS</b>	<b>8,609</b>	<b>2,354</b>	<b>27%</b>

TOTAL CASES DIVERTED FROM OFFICIAL JUVENILE COURT DOCKETS	6,255
PERCENTAGE OF REFERRALS UTILIZING SOME FORM OF IU SERVICE	70%

### COMMUNITY SERVICES WORK DETAIL

The Work Detail program is a dispositional option for adjudicated youth in Hamilton County Juvenile Court. The program provides youth with a productive, short-term work experience as a consequence for delinquent behavior. Youth are given an opportunity to learn the principles of accountability and responsibility through various clean up and beautification projects in communities that have been affected by their delinquent behavior.

During 2007, the Work Detail department continued its partnership with Keep Cincinnati Beautiful. The department also continued its partnership with Hamilton County Environmental Services to provide assistance with environmental and educational programs for youth. The partnership resulted in an employee receiving an award from the Hamilton County Environmental Services department. The department worked with the Cincinnati Recreation Commission and the Hamilton County Park district to provide assistance with park clean up. Work Detail youth participated in the annual Great American Clean Up. The department continued to maintain its ten adopt-a-block locations throughout the Cincinnati area.

Daily Work Details	1,826
Saturday Work Details	1,340
<b>TOTAL:</b>	<b>3,166</b>

## **PROBATION**

### **PROBATION PROGRAMS AND ACTIVITIES**

Probation and the work of the Department are defined under Section 2151 and 2152 of the Ohio Revised Code. It is the duty of all department officers to carry out the orders of the Court and serve to protect the interest of the community. It is the responsibility of Probation Officers to use all suitable methods to aid youth on probation to bring about improvement in their conduct. During 2005, the Probation Department was staffed by: The Chief Probation Officer, Deputy Chief Probation Officer, 4 Probation Team Supervisors, 25 Probation Officers, 2 Probation Monitors, and 5 support staff. The Probation Department is accredited through the American Correctional Association. The department was first accredited in August of 2000 and successfully achieved its second re-accreditation in January of 2007.

The Probation Department utilizes a computerized version of its own statistical risk assessment and case classification model. The department utilizes the "What Works" principles to serve its clientele.

In 2007 the Probation Department received 1550 referrals for investigation and supervised 1343 cases under probation supervision.

### **ELECTRONIC MONITORING UNIT (EMU)**

The Juvenile Court implemented an EMU Program in 2004. EMU is a community surveillance program managed by the Court's Probation Department to provide increased supervision of high-risk youth involved with the court. The program utilizes an electronic transmitter bracelet that is worn by the juvenile, and a field monitoring device that is connected to the existing power and phone lines in the juvenile's home. Using radio frequency technology, the receiver monitors the presence or absence of the juvenile within a specified range. Should the juvenile leave the specified range area, the curfew violation is reported to the department's monitoring center. During 2007 524 youth were placed on Electronic Monitoring. 403 youth successfully met their Electronic Monitoring requirements.

### **SPECIALIZED CASELOADS**

In 2007 there were 5 specialized caseloads in the department, which are supervised by 11 officers. Individuals assigned to these caseloads receive intensive supervision and programming that is designed to meet the unique needs of the assigned probationers.

### **SEX OFFENDER SPECIFIC CASELOAD**

Since 1989 the Hamilton County Juvenile Court Probation Department has been utilizing specialized assessments of adjudicated sexual offenders. This was part of continuum of care treatment approach that followed the youth through legal, treatment and aftercare settings. The objectives for providing such an approach were: 1.) To determine the general dangerousness of the behavior and threat to the community, current victim and potential future victims. 2.) To estimate the risk of the sexually aggressive behavior being repeated. 3.) To evaluate the specific social, family, environmental and behavioral treatment strengths and needs of the adolescent offender. 4.) To determine specific recommendations regarding the ideal course of intervention and treatment along with secondary recommendations should the ideal course not be possible.

All youth adjudicated of a sexually oriented crime are assigned to the Sex Offender Specialist or to other specially trained probation officers. During 2006 the department worked with various professionals within the Court, community and across the state to further develop our practices in accordance with nationally accepted Best Practices.

#### GENDER SPECIFIC PROGRAMMING (GEMS)

Girls Empowered and Motivated for Success (GEMS) is designed to address the specific needs of adolescent females who are on probation. Seven probation officers and a supervisor manage the GEMS caseload. The caseload is set up to increase the chances of decreasing the risk for re-offending among females on probation. Members of the GEMS Team continued to undergo female specific training and networking throughout 2006.

#### INTENSIVE SUPERVISION PROBATION

The Intensive Supervision Probation Unit is designed to provide increased structure, monitoring and supervision to selected youth who are 15 years of age or older, not amenable to traditional probation services and at risk of placement out of the home or facing the possibility of commitment to the Department of Youth Services. Youth are closely monitored for compliance with a rigidly constructed plan that includes four phases. Each phase allows for increased privileges and decreased contact. Youth begin the program with few privileges. Youth can increase privileges as they earn "credit days" for strict compliance with program expectations.

#### MENTAL HEALTH CASELOAD

This caseload was established as in conjunction to the Court establishing an Individualized Disposition Docket to address youth with Mental Health issues that lead to their continued involvement with delinquent behavior. This officer is part of a team of Court and community service providers who develop an individualized plan of care for each youth and family accepted into the program. The goal of this program is to provide a seamless system of care, which will help stabilize the youth's behavior, help improve the family's ability to manage the youth and eliminate delinquent behavior. After a period of intensive services, the youth and family are transitioned back to less intensive services within their community. In 2007, 20 youth and families were served.

#### DRUG TESTING

A component of Probation Supervision is drug testing. The department has trained its staff to collect urine on site in a specially designed test cup that will give instant results. In 2007, 675 tests were administered resulting in about 25% positive results.

## **COMMUNITY-BASED SERVICES**

Youth who are involved with the Juvenile Court Probation Department often need additional services that involve community-based programs and/or out-of-home placement. Probation Officers are responsible for coordinating referrals and providing supervision for youth placed within these programs.

The following are facilities where youth are placed, or programs to which youth are referred for services, including a brief description of the program as well as the number of youth placed in/referred to that program in 2007.

### **YOUTH INC.**

Youth, Inc. is a local shelter care facility that accommodates up to 18 youth per day in two houses. Youth are referred there from the Youth Center (Detention) when it is appropriate to use a less restrictive environment that can provide short-term shelter care pending a longer-term placement or a return home. In 2007 the program served 442 males.

### **HILLCREST TRAINING SCHOOL (INTERMEDIATE PLACEMENTS AND DIAGNOSTIC ASSESSMENTS)**

Hillcrest Training School operates 142 correctional/treatment beds for adjudicated delinquent youth placed by the Court. The program primarily serves youth adjudicated of felony offenses and offers a wide range of services, which include an on grounds school, substance abuse and sex offender programming and psychological services to name a few. The Probation Department placed a total of 207 boys at Hillcrest during 2007. Hillcrest Training school also provides a short-term diagnostic assessment program for youth referred by the Probation Department. In 2006, (MAP) Multi-Dimensional Assessment Program assessed 279 adjudicated males and 88 females.

### **PASSAGES**

Passages, a division of Talbert House, is a residential treatment program for felony and chronic misdemeanor female offenders. Using a gender-sensitive approach, the Passages program utilizes techniques to address issues of personal/family relationships, accountability, victimization and substance abuse. The program has two components; a 90-day program for chronic status and misdemeanor offenders, and a 180-day program for felony offenders. Passages also offer Intensive Outpatient and Aftercare services for residents. The Juvenile Court contracts for a minimum of 10 beds per month. In 2007, 35 girls were served in residential programming.

### **COMMUNITY PLACEMENTS**

The Juvenile court periodically utilizes various residential placements in the local community to address the multiple needs of some of its client population. Usually these placements include an average length of stay of approximately six months, and satisfy a need that outpatient services cannot. This past year placements such as group homes and residential facilities in and outside the state were utilized. A total of 25 youth were directly referred or carried over from 2006 for placement this year, at 5 different facilities including Cornell Abraxas, Kokomo Academy, the Bridge, Keisha Brown Group Home, and Central Ohio Youth Center. Other court youth received placement services through various providers as part of involvement in the Hamilton Choices program (described below).

## LIGHTHOUSE FAMILY PRESERVATION

Lighthouse Youth Services provides a family outreach component for juveniles on probation who could benefit from a time-limited, structured in-home therapy approach. Workers are on call 24 hours a day during the program and work with the entire family system to help strengthen the family unit. More than 18 families benefited from these services in 2007.

## NORCEN SEX OFFENSE SPECIFIC TREATMENT

NORCEN Behavioral Health Systems, Inc. contracts with the Court to provide ongoing group, individual and family treatment for youth adjudicated on sexual offenses who are able to be maintained in the community but who need intensive treatment for their behavior. The 2 groups can accommodate approximately 7-8 youth at any given time, due to the lengthy nature of the treatment and the slow turnover that occurs. Additional youth are served individually. The Court had 45 youth serviced during 2007.

## COMMUNITY OUTPATIENT PROGRAMS

Occasionally the Court contracts on a case-by-case basis with various local providers for various outpatient treatment services for probation youth. Some examples of this would include individual sexual offender assessment and/or treatment, group substance abuse treatment, mentoring, violence prevention program participation, theft prevention program participation, in-home therapy, and the like. Due to budget constraints during the year, no youth received outpatient services directly funded by the Court in 2007.

## HAMILTON CHOICES

This managed care concept wrap around program has been in existence within Hamilton County since 1995 under several different vendors over the years. The overall mission and purpose, as well as service operations, are as follows: to purchase, evaluate, and monitor a wide variety of services directed to the County's most difficult to serve multi-system children and their families. Over the year there were approximately 59 Court youth being serviced by Choices. From the program's inception, a total of 391 Court juveniles have been (or are being) served. Nineteen (19) new youth were referred into the program in calendar year 2007. Youth receive a wide array of services ranging from community-based to residential, and remain in the program approximately 12-18 months based on their issues and needs.

## TEAM CHILD PROJECT

Team Child, a project of the Legal Aid Society of Greater Cincinnati, provides interventions and advocacy so that children involved in the delinquency system can return to and remain in school and improve their educational success. Research shows that being out of school is a predictor of juvenile crime. Improving academic performance and strengthening bonds to school lessen the risk of delinquency. During 2007, 38 youth were referred to the project.

## PSYCHOLOGY DEPARTMENT

The purpose of the Psychology Clinic is to provide mental health evaluations for the Juvenile Court System at the request of judges, magistrates, probation officers, and both prosecuting and defense attorneys. The evaluations are to determine whether juvenile offenders are competent to stand trial, appropriate for waiver, and to assist in dispositional planning. Occasionally, referrals from the dependency docket request clinic staff to assist in custody matters. The Court requested services in 2007 were:

CLINIC SERVICES	TOTAL
Psychological Evaluations	294
Mental Health Court Assessments	11
Psychiatric Evaluations	15
Evaluations for Waiver	68
Competency to Stand Trial	106
Job Applicants	88
Emergency Referrals	2,684
Detention High Risk Assessments	1,668

## SUPPORT SERVICES

### FINANCE DEPARTMENT

The Finance Department, under the Administrative Services Division is responsible for the preparation, expense and monitoring activity of the Annual County Operating budget and various state grants. Another major responsibility is the maintenance of employee sick and vacation records and production of the bi-weekly payroll. In addition, court ordered restitution is disbursed to the victim and child support for youth in placement is monitored.

<b>2007</b>		
<b>General Fund</b>	<b>Revenue</b>	<b>Expense</b>
<b>General Fund Subsidy</b>	\$18,839,744.31	
<b>Judges' Office</b>	\$3,185,554.83	\$11,134,099.74
<b>Youth Center</b>	\$1,370,003.79	\$10,424,100.95
<b>Hillcrest</b>	\$7,413,600.83	\$9,250,703.07
<b>TOTAL</b>	<b>\$30,808,903.76</b>	<b>\$30,808,903.76</b>
<b>Grants</b>		
<b>Reclaim Ohio</b>	\$2,532,879.05	\$2,532,879.05
<b>Youth Services Grant</b>	\$1,477,568.47	\$1,477,568.47
<b>Family Treat Ct.</b>	\$6,778.14	\$6,778.14
<b>Pretrial Mock Diversion</b>	\$36,915.09	\$36,915.09
<b>JJIS Implementation</b>	\$7,710.86	\$7,710.86
<b>Hillcrest MST</b>	\$33,598.08	\$33,598.08
<b>JAIBG</b>	\$134,882.08	\$134,882.08
<b>TOTAL</b>	<b>\$4,230,331.77</b>	<b>\$4,230,331.77</b>
<b>GRAND TOTAL</b>	<b>\$35,039,235.53</b>	<b>\$35,039,235.53</b>

### HUMAN RESOURCE DEPARTMENT

The Court's most important resource is its staff, whose dedicated service advances the Court's mission to children, families, and the public. The Human Resource Department supports the development of a competent and professional workforce through personnel administration and training services.

### PERSONNEL DEPARTMENT

The Personnel Department provides a broad range of services to the Court's 550 employees, covering 216 positions at 800 Broadway, 169 at the Youth Center, and 165 at Hillcrest. The department recruits new staff, screens applications, and manages the hiring process to assure a highly qualified workforce. The department is also responsible for many critical functions: maintenance of personnel records; benefits administration; management of the performance review process; and compliance assurance with applicable labor laws. The department also assists with employee relations as needed and administers the service pin



recognition program. Personnel staff are accessible to all employees in a continuing effort to promote a workplace that supports employee development and in which all people are treated with fairness, dignity and respect. The department advances policies, procedures, and practices that reflect the highest standards for competent, professional, and ethical public service.

In 2007, the department processed 965 applications, conducted 197 interviews, and directed the hiring of 87 employees. Due to impending budget constraints, overall staffing levels were reduced in 2007. These vacancies were attributable to the closure of a Youth Center unit and the subsequent transfer of those staff to Hillcrest School. Several other positions were not filled at 800 Broadway. In 2007, the personnel department took several initiatives to increase staff awareness in the area of benefits. The department coordinated numerous informational presentations for all staff to assist them during open enrollment with new health care program choices. In addition, department staff initiated electronic biweekly information and reminders about available benefits and other important employment information.

### **TRAINING DEPARTMENT**

The Training Department provides introductory orientation, continuing education, and other learning opportunities for Court employees. Department staff identify needs with internal departments and actively solicit comment for curricula development and continual improvement of the training experience. Training staff also coordinate scheduling, maintain training records and equipment, and support ongoing relationships with outside agencies to maximize training opportunities. Different types of learning opportunities covering a wide array of topics meet the diverse needs of Court staff. In 2007, Court employees received nearly 37,000 hours of training.

The training department advanced its mission in several areas in 2007. A new ethics training program was developed and introduced. It is now offered on a quarterly basis. In addition, the Court received accreditation as an authorized provider for continuing education programs for licensed counselors and social workers. And once again, the Court sponsored its fourth annual intersystem mental health training program through the joint efforts of the training staff from 800 Broadway, Hillcrest School, and the Youth Center and funding from the Office of Juvenile Justice and Delinquency. Over 250 staff from the Court and other child-serving agencies attended this valuable training program.

### **INFORMATION SERVICES**

The Information Services Department is comprised of twelve full-time employees and two contractors. Staff are responsible for the design, development, and implementation and support of the Court's computer hardware and software systems.

## **OPERATIONS DEPARTMENT**

The basic function of the Operations Department is to determine the equipment and supply requirements for the Juvenile Court, maintain an inventory of supplies commensurate with the requirements and place all necessary vendor orders. It is the department's responsibility to maintain control of Court equipment by proper record keeping, conducting an annual inventory and monitoring maintenance contracts. The Operations Department handles the majority of the purchasing for the Juvenile Court, therefore, the department is also responsible for authenticating all invoices for payment.

The Operations Department also maintains a Print Shop for the purpose of developing, duplicating and reproducing all the forms that the juvenile Court utilizes. The Operations Department is staffed with 2 full-time members. Along with the Operations Director, there is a Supply Clerk/Printer.

## CASE MANAGEMENT

### DOCKETING/CASE MANAGEMENT DEPARTMENT

The Docketing and Case Management Department of the Juvenile Court is responsible for docketing and presenting all complaints filed, maintaining and updating all legal records, and maintaining audio cassettes for Magistrates' hearings. The department consists of 43 employees who handle cases involving Delinquency, Unruly, Custody, Visitation, Traffic, Adult Jurisdiction, Child Support, and Dependency. Jobs currently within the department include Docketing Clerks, Traffic Clerk, Warrant Clerk, Case Managers, Unofficial Hearing Officer, Receptionists, School Case Managers, and File Clerks.

#### COMPLAINTS AND SOME MOTIONS FILED

	2003	2004	2005	2006	2007
DELINQUENT & UNRULY	19,141	19,803	19,894	21,160	18,752
TRAFFIC	7,296	6,810	6,568	6,511	5,664
PATERNITY & SUPPORT	2,797	3,536	1,961	1,095	912
CONTEMPT MOTIONS	5,389	6,403	4,568	5,785	4,386
MODIFICATION OF SUPPORT	1,160	1,062	794	738	709
MOD. OF SUPPORT - CSEA		260	1,244	937	1,753
ADMIN. ORDER of SUPPORT		237	1,736	2,544	1,016
REGISTRATION of ADMIN. ORDER					1,718
ADMIN. MODIFICATION ORDER	490	477	1,239	976	1,784
INVESTIGATIVE REPORT	2,989	4,333	4,222	3,550	3,465
DEPENDENCY, NEGLECT & ABUSE	601	618	598	618	593
CUSTODY, VISITATION & HABEAS CORPUS	1,383	1,239	1,417	1,334	1,316
MISCELLANEOUS	2	2	1	0	0
ADULT MISDEMEANOR .	2,060	1,730	1,602	1,329	1,442
<b>TOTALS</b>	<b>43,308</b>	<b>46,510</b>	<b>45,844</b>	<b>46,577</b>	<b>43,510</b>
HEARINGS CONDUCTED	140,543	151,447	164,283	163,890	153,339
HEARINGS PER CASE	3.25	3.26	3.58	3.52	3.52
HEARINGS PER DAY	562	606	657	656	613
DELINQUENT FILINGS	17,630	18,166	18,120	19,339	17,101
FELONY FILINGS	3,037	2,881	2,939	3,172	2,766
JUVENILES PC TO DYS	130	125	159	158	143
JUVENILES BOGJ	48	39	76	73	70
JUVENILES SYO	2	5	1	0	0

### VOLUNTEER REFEREE PROGRAM

Two referee diversion programs exist in Hamilton County in an attempt to divert youth from official delinquent records.

Judge Benjamin S. Schwartz of Hamilton County Juvenile Court initiated the Volunteer Referee Program in 1958. It was the first program of its kind in the country. Attorneys were appointed by the Court as Volunteer Referees to hear unofficial cases of a minor nature within their own community. The program has continued with few modifications over the

years, under Judges William J. Morrissey; Olive L. Holmes; David E. Grossmann; John P. O'Connor, Sylvia Sieve Hendon, Thomas R. Lipps, and Karla J. Grady.

Local businesses, schools, police and citizens refer cases. The advantage of the program is that cases are heard within the youth's own community. Generally the cases are heard in the evening, as it is more convenient for all parties to participate. There is high visibility of the child for enforcing house arrest, work details and other measures of discipline.

During the year 2007, there were 1,086 youth served by the Volunteer Referee Program. Of these 145 were referred back to the police department or school for further action. A total of 941 were handled unofficially and diverted from the system.

### **CLERK'S OFFICE**

In Hamilton County Juvenile Court, Judge Thomas R. Lipps and Judge Karla J. Grady are Ex Officio Clerks of the Court. All cases filed are processed through either the Clerk's Office at 800 Broadway, or at the Youth Center Intake Department. The Clerk's Office at 800 Broadway consists of the Chief Deputy Clerk and 14 employees who screen, process and image new complaints and motions; send service to notify parties of court dates; prepare mandated, and internal statistical reports; establish restitution accounts; and process financial transactions for restitution, fines, court costs, purges, bond, and other ordered fees.

### **JUVENILE JURISDICTION**

#### **TRAFFIC COMPLAINTS FILED**

TRAFFIC COMPLAINTS FILED IN 2006..... 6,511

TRAFFIC COMPLAINTS FILED IN 2007..... 5,663

	<b>2006</b>	<b>2007</b>
Licensing of Motor Vehicle	113	99
Driver License Law	111	175
Financial Responsibility	2	2
Operation of Vehicle	3,649	3,065
Equipment and Loads	491	450
Motor Vehicle Crimes	115	94
Local Ordinances	2,030	1,778
<b>TOTAL</b>	<b>6,511</b>	<b>6,511</b>

## UNRULY COMPLAINTS FILED

UNRULY COMPLAINTS FILED 2006 ..... 1,822

UNRULY COMPLAINTS FILED 2007 ..... 1,646

	2006	2007
Runaway	824	733
Incorrigible	130	120
Incorrigible Out of County	24	28
Unruly Tobacco	51	4
Unruly	45	39
Curfew Violation	546	471
Habitual Truancy	202	251
<b>TOTAL</b>	<b>1,822</b>	<b>1,646</b>

## DELINQUENT COMPLAINTS FILED

<b>HOMICIDE</b>	2006	2007
Aggravated Murder	4	6
Complicity Aggravated Murder	0	1
Attempt Aggravated Murder	1	0
Murder	3	6
Attempt Murder	3	0
Involuntary Manslaughter	1	0
Reckless Homicide	1	0
Aggravated Vehicular Homicide	3	2
Vehicular Manslaughter	0	2
<b>TOTAL</b>	<b>16</b>	<b>17</b>

<b>ASSAULT</b>	2006	2007
Felonious Assault	135	154
Felon. Assault Peace Officer	4	4
Complicity Felonious Assault	5	4
Attempt Felonious Assault	1	0
Attempt Aggravated Assault	8	10
Aggravated Vehicular Assault	0	2
Vehicular Assault	1	6
Assault	1,071	857
Assault Teacher, Admin, Bus Driver	123	103
Assault Child Service / Agency Worker	0	19
Assault Corrections Officer	9	17
Assault Peace Officer	21	30
Complicity Assault	6	6
Attempt Assault	2	3
Negligent Assault	3	0
<b>TOTAL</b>	<b>1,389</b>	<b>1,215</b>

<b>MENACING</b>	2006	2007
Aggravated Menacing	169	149
Complicity Aggravated Menacing	2	0
Menacing	199	177
Menacing Child Service/Agency Worker	1	0
Menacing By Stalking	4	6
<b>TOTAL</b>	<b>375</b>	<b>332</b>

<b>KIDNAPPING</b>	2006	2007
Kidnapping	25	9
Complicity Kidnapping	1	0
Abduction	6	1
Complicity Abduction	3	0
Unlawful Restraint	3	2
Extortion	1	0
<b>TOTAL</b>	<b>39</b>	<b>12</b>

<b>SEXUAL OFFENSES</b>	2006	2007
Rape	50	54
Attempt Rape	2	4
Sexual Battery	0	1
Gross Sexual Imposition	38	28
Attempt Gross Sexual Imposition	1	1
Sexual Imposition	17	12
Public Indecency	9	15
<b>TOTAL</b>	<b>117</b>	<b>115</b>

<b>PROSTITUTION</b>	2006	2007
Soliciting	5	2
Loiter to Engage in Prostitution	5	2
<b>TOTAL</b>	<b>10</b>	<b>4</b>

<b>OBSCENITY</b>	2006	2007
Obscenity – Pandering	1	01
<b>TOTAL</b>	<b>1</b>	<b>0</b>

<b>ARSON</b>	2006	2007
Aggravated Arson – Person	16	15
Aggravated Arson – Property	16	14
Complicity Aggravated Arson	5	0
Attempt Aggravated Arson	5	0
Arson – Private Property	12	19
Arson – Public Property	6	6
Arson – Land	2	4
Attempt Arson	0	1
<b>TOTAL</b>	<b>62</b>	<b>59</b>

<b>DISRUPTION, VANDALISM, DAMAGE</b>	<b>2006</b>	<b>2007</b>
Disrupt Communication Services	2	3
Disrupt Transportation / Utility Services	7	14
Disrupt Service – Emergency Personnel	0	3
Vandalism	34	59
Complicity Vandalism	5	2
Criminal Damaging	510	419
Complicity Criminal Damaging	6	1
Criminal Mischief	88	54
Complicity Criminal Mischief	0	1
Vehicular Vandalism	15	9
<b>TOTAL</b>	<b>667</b>	<b>565</b>

<b>ROBBERY</b>		
Aggravated Robbery	310	203
Complicity Aggravated Robbery	28	21
Attempt Aggravated Robbery	1	0
Robbery	216	159
Complicity Robbery	6	2
Attempt Robbery	1	5
<b>TOTAL</b>	<b>562</b>	<b>390</b>

<b>BURGLARY</b>		
Aggravated Burglary	33	23
Complicity Aggravated Burglary	1	0
Burglary	226	241
Complicity Burglary	6	6
Attempt Burglary	2	7
Break and Enter	173	167
Complicity Break and Enter	9	6
Attempt Break and Enter	4	8
<b>TOTAL</b>	<b>454</b>	<b>485</b>

<b>TRESPASS</b>		
Criminal Trespass	429	431
Aggravated Trespass	9	2
<b>TOTAL</b>	<b>438</b>	<b>433</b>

<b>SAFECRACKING</b>		
Safecracking	1	1
Tamper With Coin Machine	7	5
Complicity Tamper With Coin Machine	0	2
<b>TOTAL</b>	<b>8</b>	<b>8</b>

<b>THEFT</b>		
Theft	1,438	1,306
Grand Theft	47	35
Theft of Drugs	5	5
Complicity Theft	30	27
Complicity Grand Theft	10	9
Attempt Grand Theft	8	4
Attempt Theft	19	8
Unauthorized Use of Vehicle	64	56
Unauth. Use Vehicle -Felony	4	2
Auto Theft	47	51
Unauthorized Use of Property	3	1
Complicity Unauthorized Use of Property	1	0
Passing Bad Check	0	3
<b>TOTAL</b>	<b>1,671</b>	<b>1,507</b>

<b>MISUSE OF CREDIT CARDS</b>		
Misuse of Credit Cards	21	5
Complicity Misuse of Credit Cards	1	0
<b>TOTAL</b>	<b>22</b>	<b>5</b>

<b>FORGERY</b>	<b>2006</b>	<b>2007</b>
Forgery	40	8
Complicity – Forgery	1	0
Criminal Simulation	1	0
<b>TOTAL</b>	<b>42</b>	<b>8</b>

<b>FRAUD</b>		
Tamper with Records	2	3
<b>TOTAL</b>	<b>2</b>	<b>3</b>

<b>RECEIVING</b>		
Receive Stolen Property	326	325
Receive Stolen Property - Over	62	49
Complicity Receive Stolen Property	3	2
<b>TOTAL</b>	<b>391</b>	<b>376</b>

<b>GAMBLING</b>		
Public Gaming	1	4
Gambling	6	2
<b>TOTAL</b>	<b>7</b>	<b>6</b>

<b>OFFENSES AGAINST PEACE</b>		
Inciting to Violence	3	2
Aggravated Riot	6	17
Riot	1	7
Failure to Disperse	2	2
Telecommunication Harassment	35	34
Inducing Panic	60	67
Complicity Inducing Panic	0	2
Making False Alarms	40	37
Complicity Making False Alarms	0	2
Disorderly Conduct	1,566	1,333
Disorderly Conduct - Intoxicated	26	32
Misconduct at Emergency	3	3
<b>TOTAL</b>	<b>1,742</b>	<b>1,538</b>

<b>OFFENSES AGAINST FAMILY</b>		
Endangering Children	7	9
Contrib. To Unruliness/Delinquency	1	4
Interfere with Custody	2	0
Domestic Violence	511	509
Domestic Violence Felony	93	85
<b>TOTAL</b>	<b>614</b>	<b>607</b>

<b>OFFENSE AGAINST JUSTICE</b>		
Intimidation	4	25
Intimidating Victim, Witness	1	1
Retaliation Against Crime Victim	0	1
Falsification	173	152
Tampering with Evidence	18	25
Fail to Report Crime	1	0
Obstructing Official Business	723	633
Obstructing Justice	7	9
Assault Police Dog or Horse	1	1
Resisting Arrest	151	158
Flee and Elude Police Officer	21	13
Fail to Comply with Police	14	11
Fail to Comply with Police - Felony	13	20
Attempt Fail to Comply with Police – Fel.	0	1
Escape	28	18
Convey Drug/Weapon into Detention	2	2
Harassment by an Inmate	0	2
<b>TOTAL</b>	<b>1,157</b>	<b>1,072</b>

<b>ATTEMPT, COMPLICITY,CONSPIRACY</b>	<b>2006</b>	<b>2007</b>
Conspiracy	8	0
Attempt	13	18
Complicity	20	17
<b>TOTAL</b>	<b>41</b>	<b>35</b>

#### **WEAPONS CONTROL**

Carrying Concealed Weapon	140	153
Carry Concealed Weapon Felony	21	3
Complicity Carry Concealed Weapon	1	1
Have Weapon Under Disability	46	38
Possess Weapon in Detention Facility	0	1
Weapon in School Safety Zone	35	38
Possess Object Indist from Firearm	2	3
Discharge Firearm Habitation/School	3	6
Discharge Firearm on/near Prohib Prem.	2	5
Discharge Firearm on/near Public Road	1	3
Dangerous Ordnance	4	10
Firearm – Underage Purchase	1	0
Improperly Furnish Firearm to Minor	0	2
Firearm Transport Loaded	3	1
Improp. Handling Firearm in Motor Veh.	8	4
Possess Criminal Tools	68	40
<b>TOTAL</b>	<b>335</b>	<b>308</b>

#### **DRUG OFFENSES**

Aggravated Trafficking in Drugs	1	8
Aggravated Trafficking in Drugs - School	19	15
Trafficking Drugs	24	10
Trafficking Drugs Near School	26	18
Attempt Drug Trafficking	0	1
Drug Trafficking Marijuana	19	18
Drug Traff Marijuana Near School	28	19
Drug Trafficking Cocaine	54	26
Drug Trafficking Cocaine Near School	73	44
Drug Trafficking Heroin	3	0
Drug Trafficking Heroin Near School	14	5
Illegal Cultivation of Marijuana	1	1
Aggravated Possession of Drug	20	8
Possession of Drug	44	34
Possession of Cocaine	210	109
Possession of Heroin	17	5
Possession of Marijuana	460	314
Possession of Hashish	0	1
Drug Abuse	28	16
Permit Drug Abuse	1	0
Possess Drug Abuse Instrument	4	3
Possess Drug Paraphernalia	192	152
Illegally Process Drug Document	0	1
Tampering With Drugs	1	0
Abusing Harmful Intoxicants	3	1
Illegally Dispense Drug Samples	0	2
Possess Counterfeit Cont. Substance	14	22
Traff Counterfeit Controlled Substance	4	7
Traff Count Cont Subs – School	2	5
<b>TOTAL</b>	<b>1,262</b>	<b>845</b>

<b>MISCELLANEOUS OFFENSES</b>	<b>2006</b>	<b>2007</b>
Ill Dist of Cigarette or Tobacco Products	0	1
Desecration	0	3
Ethnic Intimidation	6	3
Contaminate Substance-Human Use	1	3
<b>TOTAL</b>	<b>7</b>	<b>10</b>

#### **FIREWORKS VIOLATIONS**

Discharge Fireworks	2	2
<b>TOTAL</b>	<b>2</b>	<b>2</b>

#### **NUISANCES**

Littering	2	0
<b>TOTAL</b>	<b>2</b>	<b>0</b>

#### **LIQUOR CONTROL**

Consume Possess Liquor in Veh	1	1
Purchase/Consume	265	295
Possession	13	12
Misrepresent to Obtain Alcohol	0	2
Furnish Alcohol to a Minor	4	3
<b>TOTAL</b>	<b>283</b>	<b>313</b>

#### **DRIVER LICENSE LAW**

Fictitious License, ID Card	1	3
Display Improper Driver's License	1	0
<b>TOTAL</b>	<b>2</b>	<b>3</b>

#### **HABITUAL / CHRONIC TRUANCY**

Habitual Truancy – Prior Adjudication	1	0
Chronic Truancy	464	494
<b>TOTAL</b>	<b>465</b>	<b>494</b>

#### **VIOLATIONS**

Violation of Court Order	26	38
VCO Incurrigible	810	613
VCO Probation	633	535
VCO Placement	964	868
VCO Runaway	1,349	1,097
VCO Truancy	917	945
VCO Tobacco	26	5
VCO Work Detail	644	499
VCO Stay Center	342	236
VCO EMU	142	168
VCO Curfew Violation	720	694
Parole Violation	232	217
<b>TOTAL</b>	<b>6,805</b>	<b>5,915</b>

#### **MISCELLANEOUS/LOCAL CODES**

Miscellaneous Codes	347	426
<b>TOTAL</b>	<b>347</b>	<b>426</b>

## RESTITUTION

In 2006, the total restitution collected was \$74,939.06

## FINES & COSTS COLLECTED

Fines	\$54,507.96
Court Costs	\$135,069.20
RRF & GRF	\$105,741.79
Computer Fees	\$50,742.89
Legal Research	\$15,061.20
Witness Fees	\$7,387.57
Delivery Fees	\$11,998.35
Work Detail Fees	\$873.00
Restitution Process Fee	\$2,284.79

## DISMISSALS

In 2007, 7,340 delinquent, unruly, traffic and adult misdemeanor cases were dismissed.

## OHIO DEPARTMENT OF YOUTH SERVICES

The Court committed 143 juveniles to the Department of Youth Services in 2007 and revoked parole for 22 juveniles.

## TRANSFERS

In 2007, 70 juveniles were transferred to the Court of Common Pleas, General Division to have their cases tried as adults.

## CRIMES AGAINST ELDERLY AND HANDICAPPED

The following report, mandated by section 2151.18 of the Revised Code, reflects the number of complaints filed with the court, that allege that a child is a delinquent child, in relation to which the court determines under division (D) of section 2151.27 of the Revised Code that the victim of the alleged delinquent act was sixty-five years of age or older or permanently and totally disabled at the time of the alleged commission of the act.

TYPE OF OFFENSE	PROPERTY	THEFT	VIOLENT
DELINQUENT COMPLAINTS FILED	9	13	63
ADJUDICATIONS	4	10	28
ADJUDICATION & RESTITUTION	2	8	4
COMMITTED TO AN INSTITUTION	0	0	1
TRANSFERRED FOR CRIMINAL PROSECUTION	0	0	1



## ADULT JURISDICTION

### DEPENDENCY, NEGLECT AND ABUSE

The Dependency Department is responsible for all complaints filed by public and private agencies alleging a child to be dependent, neglected, and/or abused. If a child is placed in the care of an agency, the dependency department must approve and monitor the implementation of the agency's plan for each child. The goals of the statutes that define the operation of the department are to protect children, to respect the rights of parents and to obtain permanent homes for children in a timely fashion.

	<b>2006</b>	<b>2007</b>
NEW FILINGS	481 cases	487 cases
FILINGS DISMISSED	757 children	802 children
	87 children	76 children
INITIAL DISPOSITIONS		
Direct Custody to Individual	127 children	58 children
Protective Supervision	124 children	117 children
Temporary Custody	404 children	437 children
Permanent Commitments	79 children	45 children
Planned Permanent Living Arrangement	51 children	39 children

During 2007, in addition to the 45 children placed in permanent custody as an initial disposition, 52 children were modified from a status of temporary custody to permanent custody.

During 2007, in addition to the 39 children placed in planned permanent living arrangements as an initial disposition, 63 children were placed in planned permanent living arrangement as a modification to a prior grant of temporary custody

### CHILDREN UNDER AGENCY CUSTODY OR SUPERVISION AT YEAR END

	<b>2006</b>	<b>2007</b>
Protective Supervision	109 children	119 children
Temporary Commitments	390 children	475 children
Permanent Commitments	370 children	313 children
Planned Permanent Living Arrangement	325 children	216 children
<b>TOTAL</b>	<b>1,194</b> children	<b>1,223</b> children

In addition to addition to addressing child abuse, neglect and dependency cases, the Dependency Department hears motions to modify prior dependency orders, as well as child custody cases that have been transferred from the Court of Domestic Relations. New filings of these cases are set forth below:

	<b>2006</b>	<b>2007</b>
New motions to Modify Prior Dependency Dispositions	269 cases	336 cases
	410 children	505 children
New Cases Transferred from the Court of Domestic Relations	2 cases	4 cases
	2 children	6 children

## OTHER COMPLAINTS FILED

### ADULT MISDEMEANORS

	<b>2006</b>	<b>2007</b>
Failure to Send Child to School	1,234	1,348
Endangering Children	12	14
Tend to Cause Delinquency of a Minor	52	52
Contribute to Delinquency	11	9
Adult Probation Violation	14	12
Interference with Custody	1	0
Violation of EMU	5	7
<b>TOTAL</b>	<b>1,329</b>	<b>1,442</b>

	<b>2006</b>	<b>2007</b>
PARENT CHILD RELATIONSHIP	973	778
SUPPORT	2,649	2,917
CUSTODY	1,218	1,230
VISITATION	156	136
CHILD CARE POWER OF ATTORNEY	121	147
CARETAKER AUTHORIZATION AFFIDAVIT	12	21
HABEAS CORPUS	0	0
PERMISSION TO MARRY	3	0
PARENTAL BYPASS	0	0

<b>SOME MOTIONS FILED</b>	<b>2006</b>	<b>2007</b>
CONTEMPT	5,785	4,386
MODIFICATION OF SUPPORT	1,675	2,462
ADMINISTRATIVE MODIFICATION ORDER	976	1,784
INVESTIGATIVE REPORTS	3,550	3,465

<b>HEARINGS CONDUCTED</b>	<b>2006</b>	<b>2007</b>
TOTAL HEARINGS CONDUCTED	163,890	153,339
AVERAGE NUMBER OF HEARINGS PER FILING	3.52	3.52

## SECURITY DEPARTMENT

The Security Department is comprised of 13 full-time Law Enforcement Officers. These Officers have been certified by the Ohio Peace Officers Training Commission and have received specific and advanced training. The Hamilton County Juvenile Court Security Department is the first and only juvenile court certified by the Commission on Accreditation for Law Enforcement Agencies (CALEA).

The Security Department operates in compliance with the Supreme Court of Ohio, Court Security Standards. The Security Department is responsible for providing security and prisoner transports within Juvenile Court at 800 Broadway. They further provide security and prisoner transports to the courtrooms at the Youth Center, prisoner transportation to and from other jurisdictions and is responsible for providing security at the Community Services Work Detail Program.

## **MAGISTRATES**

---

There are twenty-seven Magistrates in Juvenile Court. The Magistrates are appointed by the Juvenile Judges to preside over the daily case management in Juvenile Court. The powers of a Magistrate are similar to those of a Judge, however, their decisions and orders are subject to review and approval by the assigned Juvenile Court Judge. In Hamilton County, Magistrates determine delinquency, unruly, dependency, custody, paternity and child support matters in Juvenile Court. One hearing officer is assigned to hear delinquency and unruly cases referred for unofficial hearings.

Nine Magistrates are assigned to preside over cases involving allegations of dependency, neglect and abuse of children. They are responsible for deciding the temporary and permanent placement of children. The primary goal of the dependency process is to protect the best interest of the child.

The remaining Magistrates preside over delinquency, unruly, traffic, custody, paternity and child support. In delinquency, unruly and traffic matters, Magistrates preside at the plea and trial hearings and sometimes in conjunction with the Probation Department and Court Services Department determine appropriate dispositions.

Juvenile Court has jurisdiction of paternity, custody and child support when a child is born out of wedlock, or when married parents have not filed for divorce. The Magistrates oversee proceedings to establish the proper parent/child relationship. In addition to establishing paternity, the Magistrates also set child support orders. A Magistrate has the authority to hold a parent in contempt of court and place them before the assigned Judge for imposition of a jail term for failure to pay child support. The Magistrates also decide custody and visitation matters in Juvenile Court. Custody and visitation decisions determine who shall be the residential parent or custodian of a child and provides for the visitation schedule of a child.

### **UNOFFICIAL COURT PROGRAM**

In March of 1975 the Court established an Unofficial Court Program to hear unruly and minor misdemeanor offenses. Supervision of the program is handled by the Executive Director of Docketing and Case Management Department, Hamilton County Juvenile Court.

During the year 2007, a total of 1,397 juveniles were referred to the Unofficial Hearing Officer on 1,571 charges. Of the 1,397 charges 375 were referred back to the Official Docket for hearing.

### **UNOFFICIAL TEEN COURT PROGRAM**

In April of 2007 the court established an Unofficial Teen Court Program to hear first time minor misdemeanor offenses. Supervision of the program is handled by the Teen Court Coordinator, a Magistrate, the Diversion Hearing Officer and a Probation Officer.

During the year of 2007, a total of 81 defendants were referred to the Teen Court Program on 97 charges. Of the 97 charges, 14 were referred back to the Official Docket for hearing.

The Hamilton County Teen Court Missions statement:

"To provide quality service for the positive development of children, the safety of the community and the preservation of the family unit."

### Program Description

Juvenile Court established Hamilton County's first Teen Court after gathering best practices literature and research, and by collaborating with the Stark County Juvenile Court in Canton, Ohio. The Hamilton County Teen Court program is a diversion program that benefits the defendants, participants, the Court, and the community. This year the program began as a pilot project starting in April and was a weekly operation by fall. The programs youth volunteers came from 16 High Schools both public and private throughout Hamilton County. The program included 50 student volunteers during the 2007 year. Over 150 youth applied to be a part of the program in 2007. Teen Court is held every Wednesday in the spring and fall at the Hamilton County Youth Detention Center located at 2020 Auburn Ave. The Teen Court Youth Volunteers are chosen based on an application, two teacher recommendations and an essay. Applications are reviewed by the Teen Court staff. Teen Court has training before each session (fall and spring) that focuses on team building and learning the goals and expectations of the program. The youth staff is also given a tour of the Youth Detention Center. This activity allows the jurors an inside look into the facility and helps when they are speaking with the defendants,

When an unofficial complaint is filed that meets the program's criteria, the Teen Court Coordinator and Diversion Hearing Officer notify the defendant and parents to explain the program. They must admit to the charge.

Each Defendant appears in court with his/her parents and or guardian. The bailiff introduces the defendant to the jurors and informs the jury of the charge. After the prosecutor and the defense attorney each present their cases, the defendant and parents are given an opportunity to speak. The jury then deliberates and recommends a sentence. The sentence is read and the juvenile and parents are given a copy of the disposition. The juvenile has a specific time frame within which to complete the sentence. Failure to complete the sentence results in the case being set before a Magistrate on the Official Docket.

### Statistics

The Teen Court program demonstrates the effectiveness of juvenile defendants being judged by their peers. The recidivism rate for Teen Court participants in 2007 was 15 % for students who completed the program. The average age of a defendant in the program is 15 years old. The program hears cases that involve Juveniles between the ages of 13-17. The Teen Court staff balances the docket with diversity amongst not only the defendants but the Teen Court staff as well.

## **FAMILY TREATMENT DRUG COURT**

### **MISSION**

The Hamilton County Family Treatment Drug Court is a collaborative effort to ensure timely permanence for children in the custody of the Hamilton County Department of Job & Family Services or under agency supervision. The goal is to provide the most efficient substance abuse treatment for parents, as a safe return to a sober parent is the most natural form of permanency the system can provide. This program avoids ineffective treatment, ill-informed court decision-making and repetitive litigation that impeded permanency.

### **PROGRAM DESCRIPTION**

As a condition for admission to the Family Treatment Drug Court the parent stipulates to the admissibility of all Family Treatment Drug Court findings and treatment records in any dependency proceeding and waives any further cross examination or confrontation of the reporters to the Family Treatment Drug Court. In exchange for this waiver of rights, the parent receives the benefits of close judicial monitoring of treatment, efficient exchange of information among collaborative agencies, and individualized case planning all of which are designed to effect the safe return of the child. Conversely, unsuccessful completion of the program will be documented in the findings of fact and conclusions of law issued by the Hamilton County Family Treatment Drug Court and will be considered by the Dependency System for all purposes in the future. This voluntary program, at its core, protects the due process rights of the participants yet offers the treatment benefits associated with adult drug courts. As a separate tract to the Hamilton County Juvenile Court's model court, which is already conducting close monitoring of the child's case plan, the Family Treatment Drug Court achieves the goal of timely permanency for children within a context that does not unduly compromise parental rights.

The Family Treatment Drug Court began in September of 2002, and received funding through a grant from the Substance Abuse & Mental Health Services Administration.

### **MEDIATION**

Mediation offers an effective alternative to the traditional court process by using a non-adversarial conflict resolution process in an environment of collaborative problem solving. Mediation provides a forum to parties that promotes the safe, guided exchange of information following simple rules that are clearly explained from the outset. Parties are permitted to explore any avenue of possible resolution unfettered by external restraints.

### **CUSTODY AND VISITATION MEDIATION**

The Court contracts with attorneys and social workers trained in family mediation and dispute resolution to mediate petitions and motions for custody and visitation. The magistrates referred 106 cases involving custody and visitation petitions to mediation in 2007, following a pretrial hearing.

The parties reached a full or partial agreement in 46% of the cases mediated.

## CHILD PROTECTION MEDIATION

The goal of the Child Protection Mediation Program is to create an atmosphere that values children and families through a reliable process that empowers families and generates reasonable and creative solutions resulting in permanency for children. The types of cases served by the Child Protection Mediation Program included the following: custody or visitation petitions; adjudications of abuse, neglect and/or dependency; dispositional and post-dispositional requests of protective supervision, temporary custody, planned permanent living arrangement and permanent custody; and disputes related to case plan services.

The magistrates referred 53 families to mediation in 2007. In 89% of the cases referred to mediation, the parties appeared and participated in the session. The parties reached a full or partial agreement in 70% of the cases mediated. Of those cases in which the parties reached an agreement, 94% resulted in a full agreement and 6% resulted in a partial agreement. The magistrates approved all the agreements reached by the parties in mediation.

## INDIVIDUALIZED DISPOSITION DOCKET

### PROGRAM HISTORY

In 2004, Hamilton County Juvenile Court partnered with the Hamilton County Community Board of Mental Health to implement a juvenile mental health court, known as the Individualized Disposition Docket. This program incorporates the following best practice principles from the *RESOURCE GUIDELINES: Improving Court Practice in Child Abuse & Neglect Cases* and the *JUVENILE DELINQUENCY GUIDELINES: Improving Court Practice in Juvenile Delinquency Cases* published by the National Council of Juvenile and Family Court Judges: one magistrate/one family case assignment model; frontloading of services; family engagement in all stages of the proceedings; frequent substantive review hearings; the use of individualized dispositions that includes graduated sanctions/rewards; and community collaboration. The docket serves youth between the ages of 12 and 17 years who are adjudicated delinquent and diagnosed with a serious emotional disturbance. Although these youth are at risk for out of home placement, they have a designated caregiver who will work them in an intensive, home-based intervention.

### MISSION

The Individualized Disposition Docket is a community collaborative model of service delivery which utilizes an interdisciplinary and integrated team approach to treatment for youth with serious emotional disorders who are involved in Juvenile Court and require specialized, supported care in order to remain in the community. This model of service focuses on the provision of assertive, comprehensive psychiatric interventions designed to assist and empower the family in achieving individualized goals which are tailored to meet their needs, thus eliminating the risk of out of home placement or other court sanctioned dispositions.

## SERVICE MODEL

In 2005, the Hamilton County Community Mental Health Board contracted with Lighthouse Youth Services to provide the intensive home-based intervention for the youth and families on this docket. Lighthouse adopted principles from family preservation, multi-systemic therapy, wrap-around, and Assertive Community Treatment (adult mental health court model) in the program design. This model also integrates drug and alcohol services as over sixty percent of the youth on this docket presented with a co-occurring disorder. The continuum of services available through Lighthouse includes: comprehensive family assessments; twenty-four hour crisis intervention; mental health case management; psychiatric services; medication management; individual and family therapy ; parenting education; mentoring; educational support; behavior management; chemical dependency treatment/education; anger management/conflict resolution; and community support and resource development.

## STATISTICS

In 2007, sixteen youth with serious emotional disorders entered the Individualized Disposition Docket, and the program served a total of twenty-nine youth and their families in 2006. The Individualized Disposition Docket discharged twenty-one participants from the program in 2006, and 54% of the youth discharged from the program were in compliance or substantial compliance with their treatment plan at the time of their discharge.

## **PRETRIAL DIVERSION DOCKET**

### PROGRAM HISTORY

In early 2004, the Hamilton County Juvenile Court partnered with the Hamilton County Community Board of Mental Health to implement a juvenile mental health court, known as the Individualized Disposition Docket. In implementing the Individualized Disposition Docket, it became apparent there was a need for early identification of mentally ill adolescents before they became entrenched in the legal system. At the same time, Hamilton County Juvenile Court received a Planning and Implementation Grant through the Department of Justice Programs' Bureau of Justice Assistance for a juvenile diversion mental health court. In November of 2006, Hamilton County Juvenile Court began a 6 month planning process to divert mentally ill adolescents from traditional court services.

### MISSION

This mission of the Pretrial Diversion Docket is to provide early identification and intervention services prior to adjudication in an effort to avoid future contact with the juvenile justice system for youth diagnosed with a serious emotional disorder, who also may have a co-occurring substance use disorder, and have had no contact or minimal delinquency contact with the Hamilton County Juvenile Court.

## SERVICE MODEL

In 2006 the Hamilton County Community Mental Health Board contracted with Lighthouse Youth Services to provide the intensive home-based intervention for the youth and families on this docket.

## STATISTICS

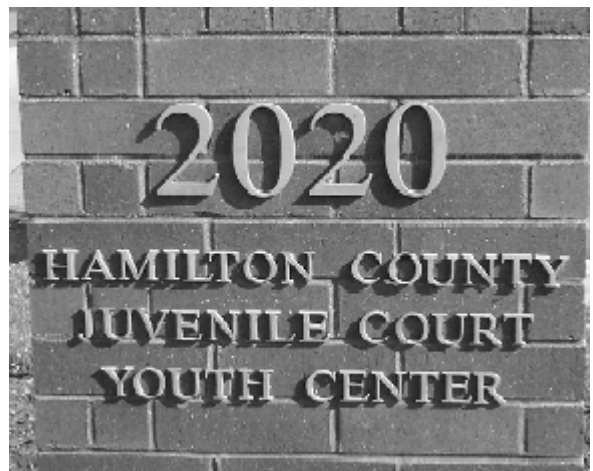
The Pretrial Diversion Docket began in June of 2007. To date, the program has served 15 youth with severe emotional disorders. Of those fifteen, eight have a co-occurring substance abuse disorder.

## **ATTENDANCE PROGRAM**

The Attendance Program involves a partnership between the Court, Westwood Elementary and Talbert House. This collaborative effort is designed to reduce absences within the schools. The Attendance Clerk and Visiting Teacher/Attendance Program Liaison identify students with poor attendance, and the school personnel engage in activities and remedial services intended to improve attendance for this targeted population. If these interventions do not result in improved outcomes, the student and their parents or guardian are cited to court. The court conducts bi-weekly hearings to monitor attendance and a service plan directed to address the underlying causes or contributing factors to the poor attendance record. The goals of the program are to increase attendance, provide support to families and prevent future contacts with the juvenile justice system. The Attendance Program Case Manager works closely with selected families by providing direct services and arranging ancillary services as needed. The Hamilton County Juvenile Court provides a Magistrate and Case Presenter for the hearings. Westwood Elementary has shown improved daily attendance and parent participation in the school setting.



# **HAMILTON COUNTY JUVENILE COURT YOUTH CENTER**



## **YOUTH CENTER**

---

The Hamilton County Juvenile Court Youth Center, located at 2020 Auburn Avenue, Cincinnati, Ohio 45219, provides short term secure placement for youth awaiting trial or placement. The staff of the Hamilton County Juvenile Court Youth Center is a team of dedicated, caring professionals committed to servicing our communities by providing a safe, secure and structured environment for the youth in our care. The Youth Center is accredited by the American Correctional Association, the National Commission on Correctional Health Care Services and the American Association of Suicidology. The Youth Center was the first detention center in the nation to participate in the Performance Based Standards Initiative.

In 2007, 5,336 youth were admitted to detention, while 4,614 youth were diverted from detention after arrest.

### **OPERATIONS DEPARTMENT**

The Youth Center Operations Department is comprised of Intake, Reception Release, and Facility Control.

The Youth Center Intake Department is the ingress to the facility for all youth. The department is responsible for making a determination whether a youth will be admitted to the facility as an admission or returned to a parent or other responsible person as a diversion. Intake Department Deputy Clerks file complaints against youth as warrants or as citations to appear in court for future plea and adjudication.

The Reception Release Department is responsible for scheduling Youth Center plea hearings, conducting mental health assessments, and preparing new admissions for unit assignment. The department is also responsible for releasing previously admitted youth from the facility. The Reception Release Department is the Youth Center department to contact for general information or when attempting to contact a current employee without having a direct phone number.

The Facility Control Department is responsible for overall facility movement between floors and access to and from secure sections of the facility. Security cameras and intercoms aid in control of facility movement. The department is considered the control center for facility movement and security. The department is also the staging point for residents scheduled for outside facility transports.

## **HOUSING DEPARTMENT**

The Housing Department has three interdepartmental floors, two of which are male floors and one female floor; consisting of an Orientation, programming, Gender Specific that also holds Orientation special needs and Programming for females.

Our 2<sup>nd</sup> floor male Orientation Unit is made of juveniles awaiting either a plea hearing or medical screening. Juveniles receive incentives for positive behavior determined by a pass or fail method.

Our 3<sup>rd</sup> floor Programming Unit has juveniles that are awaiting dispositions, placements, etc., and has a more detailed incentive system as the juveniles are usually there for a longer period of time. The average stay is 10 days, and can go up to 90 days for more complex cases.

Our 4<sup>th</sup> floor is Gender Specific, and includes our Orientation and Programming for females as well Special Needs Units for both male and female respectively. The two genders never meet while on the same floor. The incentive method is the same for males and females.

The Special Needs Units are geared for the juveniles that can not function successfully in larger groups. We offer smaller population sizes for these juveniles due mostly to mental health issues.

## **MEDICAL DEPARTMENT**

The Medical Department provides medical, dental, drug/alcohol assessments, psychological and psychiatric services to all admitted youth. These services are delivered by staff physicians provided by Cincinnati Children's Hospital. The Youth Center is accredited by the National Commission on Correctional Health Care.

Medical Screenings performed	5,334
Full Physical Examinations	3,035
Sick Call Examinations performed (nurse practitioner or physician)	1,251

## **PROGRAMS AND SERVICES**

The Programs and Services department is responsible for providing recreational, educational and volunteer services to Youth Center residents.

Recreationally residents receive two hours of large muscle exercise a day. Exercise consists of a variety of activities exposing the residents to organized individual and team sports that they may otherwise not have an opportunity to participate in elsewhere. The activities range from Wiffleball, Pickleball, Volleyball, Basketball, Ping-Pong, and multiple calisthenics and stretches.

Youth Center residents received approximately 16,500 volunteer hours in 2007. The volunteer program is comprised of more than 168 volunteers from over 81 different organizations. We have had several motivational speakers, for example, Champions, the

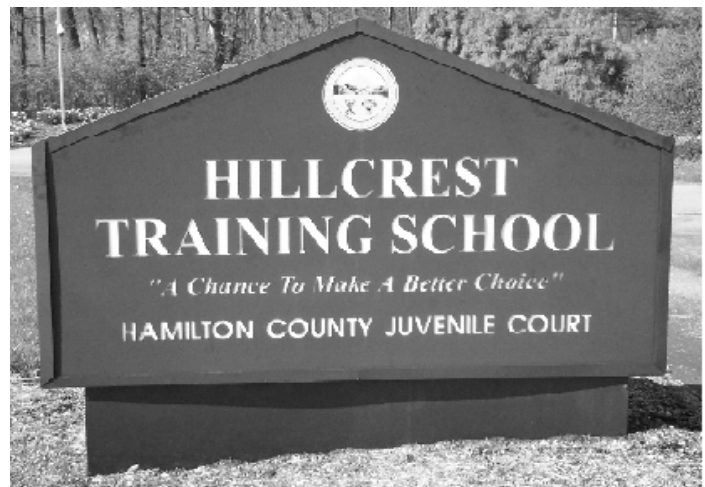
National Underground Railroad Freedom Center, the Hamilton County Coroner, Dr. O'Dell Owens, Author Annie Ruth, Sports World, Inc. and many other renowned individuals and organizations.

The Juvenile Court Youth Center, in addition to having Cincinnati Public Schools on-site during the school year, also has access to educational services during the summer months and receives tutelage from several volunteers ranging from a wide variety of educational backgrounds provided by our volunteer program.

The Youth Center training department is responsible for providing training to all youth Center staff. All new hires complete an eight-week training course, four weeks classroom training and four weeks on-the-job training. All youth center staff are trained in Fire procedures, Hostage situations, Physical intervention techniques, suicide and mental health awareness and behavior management techniques. There are 2 full time facility instructors and 10 part time instructors. The Training Department also works with the facility mentors or on-the job trainers. Youth center staff, as a facility, received over 14,000 hours of training for 2007.

# **HAMILTON COUNTY JUVENILE COURT**

## **HILLCREST TRAINING SCHOOL**



# HILLCREST TRAINING SCHOOL

---

Hillcrest Training School is located at 246 Bonham Road, Cincinnati, Ohio 45215. The agency primarily serves children between the ages of twelve and eighteen who have a history of court involvement. Hillcrest operates 118 residential treatment beds and an aftercare program for delinquent boys. In addition, the school operates 12 assessment beds for adjudicated boys. Hillcrest has dual accreditation by the American Correctional Association by meeting both the "Training School" Standards and "Aftercare Services" Standards. Hillcrest maintains National Commission on Correctional Health Care Services and American Association of Sociology accreditation. The agency is also licensed by the Ohio Department of Mental Health.

## 2007 Achievements

In 2007, Hillcrest was audited on three separate occasions, and met with the following results:

1. *American Correctional Association*: This was a dual accreditation that looked at both the Residential and Aftercare programs. On the institutional side, Hillcrest scored 98.7%, and 100%, respectively.
2. *National Commission on Correctional Health Care*: Hillcrest achieved 100% compliance. No corrective actions were recommended.
3. *American Association of Suicidology*: 100% compliance.

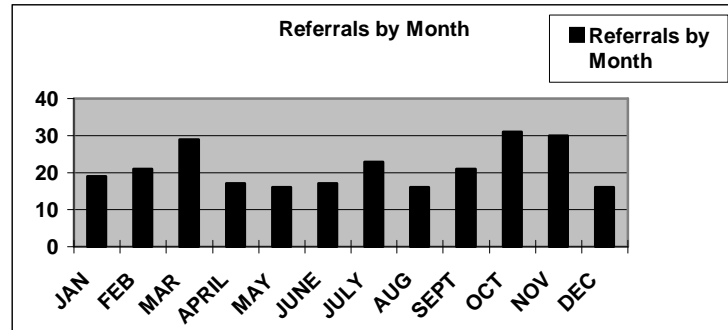
Hillcrest also successfully completed the candidacy phase of the Council of Juvenile Correctional Administrators' Performance-based Standards initiative, a quality assurance/improvement program. This 2007 accomplishment is noteworthy as it earned Hillcrest the privilege to be included in the national field average for similar types of institutions.

RESIDENTIAL CARE		ASSESSMENT UNITS	
Referrals	256	Total Served	277
Admissions	198		
Terminations	209		
Number of Youth Served	332		
Average Length of Stay (Days)	255		
Days of Care Provided	38,396		

## TOTAL REFERRALS

### Referrals by Month

JAN	19
FEB	21
MAR	29
APR	17
MAY	16
JUN	17
JUL	23
AUG	16
SEP	21
OCT	31
NOV	30
DEC	16



**TOTAL 256**

### RACE OF REFERRALS:

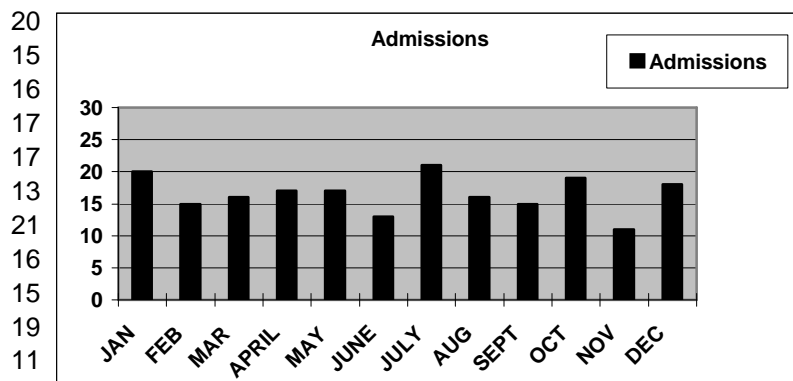
	Number	Percentage
African-American	209	81.64%
Caucasian	40	15.63%
Bi-Racial	6	2.34%
Hispanic	1	.39%
<b>TOTAL</b>	<b>256</b>	<b>100%</b>

AVERAGE AGE	AVERAGE # OF PRIORS	AVERAGE # OF DAYS ON REFERRAL
15.5 Years Old	7 Priors	30 Days

## TOTAL ADMISSIONS

### Admissions by Month

JAN	20
FEB	15
MAR	16
APR	17
MAY	17
JUNE	13
JULY	21
AUG	16
SEPT	15
OCT	19
NOV	11
DEC	18
<b>TOTAL</b>	<b>198</b>



RACE OF ADMISSIONS:

	Number	Percentage
African-American	161	81.31%
Caucasian	33	16.67%
Bi-Racial	4	2.02%
<b>TOTAL</b>	<b>198</b>	<b>100%</b>

DEGREE OF COMMITTING OFFENSE:

	Number	Percentage
<b>Violation of Court Order</b>		
Sex Offense Specific	0	0%
Substance Abuse	21	10.61%
Disruptive Behavior	3	1.52%
<b>Misdemeanor</b>		
Sex Offense Specific	0	0%
Substance Abuse	21	10.61%
Disruptive Behavior	5	2.53%
<b>Felony</b>		
Sex Offense Specific	8	4.04%
Substance Abuse	97	48.99%
Disruptive Behavior	43	21.72%
<b>TOTAL</b>	<b>198</b>	<b>100%</b>

SUSPENDED COMMITMENTS TO DYS:

	Number	Percentage
<b>Admits With SC/DYS</b>		
Sex Offense Specific	6	3.03%
Substance Abuse	117	59.09%
Disruptive Behavior	43	21.72%
<b>Admits Without SC/DYS</b>		
Sex Offense Specific	2	1.01%
Substance Abuse	22	11.11%
Disruptive Behavior	8	4.04%
<b>TOTAL</b>	<b>198</b>	<b>100%</b>

DAYS OF RESIDENTIAL CARE PROVIDED IN 2006:

Quarter	Residential Days of Care
1 <sup>st</sup>	9,466
2 <sup>nd</sup>	9,563
3 <sup>rd</sup>	9,651
4 <sup>th</sup>	9,716
<b>TOTAL</b>	<b>38,396</b>



#### RESIDENTIAL TERMINATIONS:

	Number	Percentage
Aftercare	173	82.78%
PC to DYS	18	8.61%
<b>Unsuccessful</b>	<b>6</b>	<b>2.87%</b>
<b>Other Placement Made</b>	<b>4</b>	<b>1.91%</b>
<b>No Sub-Status</b>	<b>3</b>	<b>1.44%</b>
<b>Bound Over</b>	<b>3</b>	<b>1.44%</b>
<b>Invalid Sub-Status</b>	<b>2</b>	<b>.96%</b>
<b>TOTAL</b>	<b>209</b>	<b>100%</b>

#### 2007 AVERAGE LENGTH OF STAY:

	Disruptive Behavior	Substance Abuse	Sex Offense Specific
Total # of Children Served	79	221	32
Total Residential Days Care	8,020	23,635	6,741
Terminations	58	136	14
Average Length of Stay in Days	198	219	584

#### AFTERCARE CASELOAD:

	Releases	PC/DYS
<b>2003</b>	143	25
<b>2004</b>	145	29
<b>2005</b>	124	38
<b>2006</b>	136	24
<b>2007</b>	147	28

### PROGRAMS AND SERVICES UTILIZATION STATISTICS

#### PSYCHOLOGY:

The Psychology Department conducts psychological intake assessments for each youth admitted. These assessments identify mental health, substance abuse, and psycho-educational issues. A formal diagnosis and treatment recommendation(s) are offered for each youth. The department provides staff training and consultation, individual and group counseling, and crisis intervention. Services include suicide risk assessment and assignment of suicide precautions, management of youth prescribed psychotropic medications and liaison with area mental healthcare providers. The Psychology Department takes a leadership role in coordinating and facilitating intensive cognitive-behavioral treatment groups for substance abuse and anger management problems. The department staffing includes psychology assistants and two licensed psychologists who supervise all psychological services as specified by the Ohio State Board of Psychology.

MENTAL HEALTH SERVICES	TOTAL
Psychological Evaluations	<b>227</b>
Intake Evaluations	<b>177</b>
Extended Diagnostic Evaluations	<b>50</b>
Individual Counseling Sessions	<b>11,148</b>
Crisis Intervention Services	<b>305</b>
Group Counseling Sessions	<b>525</b>

#### SUBSTANCE ABUSE PROGRAM:

All youth are assessed for substance abuse by the Intake Social Worker, Psychology Department, Residential Social Worker, and Health Care Services. Identified youth are referred to the following programming: (1.) an intensive six month cognitive/behavioral program designed to address the dual issues of alcohol and other drug use and criminal conduct, (2.) an advanced substance abuse program including restricted and graduated home visits and increased use of toxicology screening, (3.) individual counseling with certified chemical dependency counselor. Aftercare services include routine curfew checks by legal authorities, Electronic Monitoring, Social Worker contacts, and Relapse Prevention treatment groups.

<b>SUBSTANCE ABUSE SERVICES</b>	<b>TOTAL</b>
Cognitive Behavioral Groups	<b>585</b>
Individual Substance Abuse Counseling	<b>13</b>
Toxicology Screening	<b>3,059</b>
Residential	<b>2,868</b>
Aftercare	<b>191</b>
Relapse Prevention (Aftercare) Groups	<b>54</b>

#### SEX OFFENSE-SPECIFIC PROGRAM:

The primary goals of the sex offense-specific program are: community safety, victim restoration, and relapse prevention. The program offers an educational, parent support, and group therapy component. As a portion of the overall assessment process, the program relies on the use of polygraph examinations to verify information, deter further sexually abusive behaviors, and prevent program and treatment drift. Parental participation is mandatory. The average length of stay for sex offenders is 14 months with an additional period of community supervision and treatment. A family support group is also provided and each parent is required to attend at least one family support session. Aftercare services include routine curfew checks by the legal authorities, Electronic Monitoring, Social Worker contacts, and weekly Relapse Prevention treatment groups.

<b>SEX OFFENSE SPECIFIC SERVICES</b>	<b>TOTAL</b>
Sex Offender Groups	<b>436</b>
Parent Support Groups	<b>24</b>
Sex Offender Education	<b>35</b>
Relapse Prevention (Aftercare) Groups	<b>84</b>
Polygraphs	<b>14</b>

#### DISRUPTIVE BEHAVIOR DISORDERS:

This program focuses on helping youth identify and change antisocial attitudes, values, and beliefs. Youth with a pattern of violating the law and the rights of others, but who have no sexual offenses and no identified substance abuse problems are placed in this program. Treatment interventions include problem-solving, social skills, and anger management groups. Aftercare services include routine curfew checks by the legal authorities, Social Worker contacts, and Electronic Monitoring.

<b>DISRUPTIVE BEHAVIOR SERVICES</b>	<b>TOTAL</b>
Anger Management Groups	<b>123</b>
Problem Solving / Social Skills Groups	<b>168</b>
Relapse Prevention (Aftercare) Groups	<b>72</b>

### HEALTH SERVICES:

Services include health assessments, daily sick call, and management of special needs cases, medication distribution, immunizations, substance abuse urinalysis, routine dental care and training. In-service training is provided for both staff and residents focusing on health and wellness. The Health Service Department oversees the exposure control plan and assists in the monitoring of certain health safety requirements throughout the facility. Hillcrest provides on site medical and dental services. Additional health services are available through various community clinics and hospitals, as needed. The staff consists of LPNs, RN supervisor, a visiting physician, a nurse practitioner, a dentist, and a visiting psychiatrist.

HEALTH SERVICES	TOTAL
Physical Examinations, Residential	291
Psychiatric Evaluations	157
Sick Call	
Pediatrician Visit	317
Nurse Practitioner Visit	103
Nurse Visits	5,679
Dental Cleaning and Restoration	231



**HAMILTON COUNTY JUVENILE COURT  
800 BROADWAY  
CINCINNATI, OHIO 45202**

**PHONE 513-946-9200  
TTD 513-946-9340  
FAX 513-946-9217  
[www.juvenile-court.org](http://www.juvenile-court.org)**