

# **HAMILTON COUNTY JUVENILE COURT 2001 ANNUAL REPORT**



**JUDGE SYLVIA SIEVE HENDON**

**JUDGE THOMAS R. LIPPS**

## OVERVIEW

---

Hamilton County Juvenile Court has the responsibility to hear and determine all cases and issues concerning children in Hamilton County. Additionally, the Juvenile Court administers programs and facilities providing for the custody, care and rehabilitation of youth within its jurisdiction.

The types of cases appearing before the Juvenile Court include delinquency cases in which a youth is charged with a crime; dependency cases in which a child has been abused or neglected by a parent or other person; paternity/child support cases to determine parentage and collect support; traffic cases in which the driver is a juvenile; custody cases in which the parties disagree concerning with whom the child should live or visit; adult cases in which there is an issue of contribution to a child's delinquency or failure to send a child to school; and various other cases which impact the best interests of children.

The Court is managed by Administrative Judge Sylvia Sieve Hendon, Judge Thomas R. Lipps and Court Administrator James C. Ray, Jr. and is organized into six main departments. The Department of Administrative Services is responsible for Personnel, Finance, Information Services, Operations, Training, and Security. The Department of Court Services is comprised of the Probation Department, Intervention Unit, and Work Detail. The Department of Case Management is responsible for the Clerk's Office and Docketing Departments. The Magistrates' Department employs 26 magistrates who, along with the two Judges, preside over all matters before the Court. The Youth Center is a 160 bed secure detention center, located in Mount Auburn. The Youth Center holds defendants in secure custody pending court hearings or imposition of disposition. The Hillcrest Training School, located in Springfield Township, is residential treatment for 142 youth, who live, attend school, and receive rehabilitative services as a consequence for violating the law.

The Court also contracts with various placement and program services offered by child care agencies, including inpatient secure diagnostic services, shelter care housing for 30 children, custodial drug treatment centers, day treatment modalities, youth counseling programs, etc. Further, the Juvenile Court along with other official entities, have formed the Family and Children First Council to consolidate efforts, increase efficiency and improve service to families and children.

The Juvenile Court is fortunate to enjoy the services of many volunteers who give their time, expertise and money for the enhancement of children. Volunteer programs include over 30 community unofficial hearing officers where members of the legal profession deal with minor infractions, diverting the case from official charges. Volunteer chaplains provide spiritual guidance to youth held in the custody of the Court. An Advisory Council composed of citizens in the community directs services and funds to enhance court programs which cannot be funded by tax revenue to provide needy children with clothes and positive life experiences.

Hamilton County Juvenile Court is considered by the National Council of Juvenile and Family Court Judges to be a national model. Hamilton County programs are praised by the National Judicial and Correctional Associations and in published reports. Judges and officials from all across the world have traveled to Cincinnati to observe the Court. These dignitaries are interested and impressed with the Hillcrest facility, the Youth Center, the dependency system, the truancy project, the unofficial community hearings, the technological abilities, and Court security advancements as well as the many innovative programs and wide range of dispositions available to the magistrates and judges.

The Hamilton County Juvenile Court is blessed with continued support from the county commissioners through general funding, and receives significant assistance through state subsidies and federal grants which allow the Hamilton County Juvenile Court to respond to the critical issues affecting youth in this county with meaningful prevention, intervention, rehabilitation and accountability.

## TABLE OF CONTENTS

	PAGE
<b>ORGANIZATIONAL STRUCTURE</b>	
Overview	1-2
Organizational Chart	3
Judges and Administration	3
<b>JUVENILE JURISDICTION</b>	
Traffic Complaints Filed	4
Unruly Complaints Filed	4
Delinquency Complaints Filed	5-11
<b>DEMOGRAPHICS</b>	
Age, Race and Gender of Juveniles	12
Crimes Against Elderly and Handicapped Victims	13
<b>ADULT JURISDICTION</b>	
Dependency, Neglect, and Abuse	13
Other Complaints Filed	14
<b>PRETRIAL SERVICES</b>	
Intervention Unit	15-16
Volunteer Referee Program	18
Youth Center	18
Attendance Program	19
Community Courts	19
Mediation	20-21
<b>DISPOSITIONS</b>	
Bound Over to the Grand Jury	22
Permanent Commitments to Department of Youth Services	22
Hillcrest	22
Probation	22-25
Community Based Contractual Services	26-29
Work Detail	30
Restitution, Purge Payments, Fines and Court Costs	30
Dismissals	30
<b>DEPARTMENTS</b>	
Judges' Office	31-36
Administrative Services	32
Finance Department	32
Human Resources	32

## TABLE OF CONTENTS

<b>Information Services</b>	<b>33-34</b>
<b>Operations Department</b>	<b>35</b>
<b>Security Department</b>	<b>35</b>
<b>Training Department</b>	<b>36</b>
<b>Department of Court Services</b>	<b>37</b>
<b>Case Management</b>	<b>38</b>
<b>Magistrates</b>	<b>39</b>
<b>Youth Center</b>	<b>40-47</b>
<b>Hillcrest Training School</b>	<b>48-56</b>



# Hamilton County Juvenile Court



Presiding Judge  
Sylvia Sieve Hendon

Judge Thomas R. Lipps

Court Administrator  
Mark Reed

Administrative  
Assistant  
Nancy Hunt

Leah Dugan  
Administrative Magistrate

Superintendent  
Youth Center  
Harvey Reed

Superintendent  
Hillcrest Training  
School  
Joe Zurad

Chief Magistrate  
Jack McManus

Executive Director,  
Court Services  
Frank Yux

Executive Director,  
Case Management  
Melinda Klenk

Executive Director,  
Admin Services  
Jeff Schellinger



**Judge Sylvia Sieve Hendon**  
**Administrative Judge**



**Judge Thomas R. Lipps**



**Court Administrator James C. Ray, Jr.**

## JUVENILE JURISDICTION

---

### TRAFFIC COMPLAINTS FILED

TRAFFIC COMPLAINTS FILED IN 2000.....8,069

TRAFFIC COMPLAINTS FILED IN 2001.....6,859

	<b>2000</b>	<b>2001</b>
Licensing of Motor Vehicle	159	146
Driver License Law	1,119	959
Financial Responsibility	4	6
Operation of Vehicle	4,411	4,110
Equipment and Loads	743	496
Motor Vehicle Crimes	101	147
Local Ordinances	1,532	995
<b>TOTAL</b>	<b>8,069</b>	<b>6,859</b>

### UNRULY COMPLAINTS FILED

Unruly Complaints Filed 2000 ..... 2,597

Unruly Complaints Filed 2001 ..... 1,536

	<b>2000</b>	<b>2001</b>
Runaway	763	741
Incorrigible	109	112
Incorrigible Out of County	33	18
Unruly Tobacco	151	41
Unruly	19	14
Curfew Violation	619	412
Truancy	836	2
Habitual Truancy	67	196
<b>TOTAL</b>	<b>2,597</b>	<b>1,536</b>

### DELINQUENT COMPLAINTS FILED



## Hamilton County Juvenile Court

	2000	2001
<b>HOMICIDE</b>		
Aggravated Murder - Premeditated	1	0
Aggravated Murder - Premed-Firearm	1	0
Attempt Aggravated Murder - Firearm	2	0
Aggravated Murder	2	1
Complicity Aggravated Murder	2	0
Murder - Purposely	0	1
Attempt Murder - Purposely - Firearm	1	0
Murder - Attempt Commit Felony	4	3
Complicity Murder	0	1
Negligent Homicide	0	1
Vehicular Homicide	1	0
Aggravated Vehicular Homicide	2	0
<b>TOTAL</b>	<b>16</b>	<b>7</b>
<b>ASSAULT</b>		
Vehicular Assault	1	1
Aggravated Vehicular Assault	4	0
Felonious Assault on Peace Officer	2	2
Attempt Felonious Assault on PO	0	1
Complicity Felonious Assault	18	12
Attempt Felonious Assault	0	1
Felonious Assault Firearm	15	19
Felonious Assault	139	176
Aggravated Assault-Person Harmed	1	0
Aggravated Assault- Weapon/Ordinance	1	3
Complicity Aggravated Assault	0	3
Aggravated Assault	9	10
Complicity Assault	3	8
Assault Corrections Officer	2	2
Assault Teacher, Admin, Bus Operator	87	114
Assault on Peace Officer	44	28
Attempted Assault	1	2
Assault	1,045	996
Negligent Assault	1	1
<b>TOTAL</b>	<b>1,373</b>	<b>1,379</b>
<b>MENACING</b>		
Aggravated Menacing	185	205
Menacing	247	203
Menacing By Stalking	6	5
<b>TOTAL</b>	<b>438</b>	<b>413</b>

## Hamilton County Juvenile Court

<b>KIDNAPPING</b>		
Kidnapping	7	4
Abduction - Restraint	5	4
Complicity Abduction	0	1
Unlawful Restraint	0	1
<b>TOTAL</b>	<b>12</b>	<b>10</b>
<b>EXTORTION</b>		
Extortion	0	1
<b>TOTAL</b>	<b>0</b>	<b>1</b>
<b>BURGLARY</b>		
Complicity Aggravated Burglary	1	1
Aggravated Burglary	26	15
Burglary	291	237
Complicity Burglary	10	3
Attempt Burglary	10	7
Break and Enter	205	222
Complicity Break and Enter	1	3
Complicity Attempt Break and Enter	0	1
Attempt Break and Enter	0	8
<b>TOTAL</b>	<b>544</b>	<b>497</b>
<b>TRESPASS</b>		
Criminal Trespass	490	403
Complicity Criminal Trespass	1	0
Aggravated Trespass	7	6
<b>TOTAL</b>	<b>498</b>	<b>409</b>
<b>SAFECRACKING</b>		
Safecracking	6	2
Tamper With Coin machine	11	18
<b>TOTAL</b>	<b>17</b>	<b>20</b>
<b>THEFT AND FRAUD</b>		
Passing Bad Checks	3	0
Taking the Identity of Another	4	2
<b>TOTAL</b>	<b>7</b>	<b>2</b>
	<b>2000</b>	<b>2001</b>
<b>THEFT</b>		
Grand Theft > \$5,000	3	15
Theft of Drugs	3	0
Complicity Theft - Misdemeanor	22	40

## Hamilton County Juvenile Court

Complicity Theft - Felony	15	5
Complicity Attempted Theft	0	3
Theft - Elderly Person	0	3
Grand Theft > \$500	161	169
Grand Theft > \$5000	4	6
Complicity Grand Theft	4	8
Attempt Grand Theft	0	38
Theft	1,493	1,377
Grand Theft Motor Vehicle	54	160
Attempt Theft Misdemeanor	4	18
Grand Theft	85	23
Complicity Unauthorized Use of Vehicle	0	2
Unauthorized Use of Vehicle - Elderly	0	1
Unauthorized Use of Vehicle	97	113
Unauthorized Use of Property	1	4
Telecommunications Fraud	1	0
<b>TOTAL</b>	<b>1,947</b>	<b>1,985</b>
<b>MISUSE OF CREDIT CARDS</b>		
Misuse of Credit Card	20	20
<b>FORGERY</b>		
Forgery	47	39
Criminal Simulation	7	3
<b>TOTAL</b>	<b>54</b>	<b>42</b>
<b>FRAUDS</b>		
Tampering With Records	2	1
Personating An Officer	1	0
<b>TOTAL</b>	<b>3</b>	<b>1</b>
<b>PERJURY</b>		
Tamper With Evidence	22	13
Complicity Falsification	0	1
Falsification	210	113
Make False Report of Child Abuse	1	0
<b>TOTAL</b>	<b>233</b>	<b>127</b>
	<b>2000</b>	<b>2001</b>
<b>COMPOUNDING</b>		
Failure to Report A Crime	3	0
<b>TOTAL</b>	<b>3</b>	<b>0</b>
<b>OBSTRUCTING AND ESCAPE</b>		
Obstruct Official Business	643	644
Obstructing Justice	12	5
Resisting Arrest	273	267
Fail To Comply With Police Signal	22	52

## Hamilton County Juvenile Court

Fleeing and Eluding A Police Officer	17	20
Attempt Escape	0	1
Escape	23	19
<b>TOTAL</b>	<b>990</b>	<b>1,008</b>
<b>CONVEYANCE OF PROHIBITED ITEMS</b>		
Conveyance of Drugs In Detention	7	2
Conveyance of Liquor In Detention	1	0
<b>TOTAL</b>	<b>8</b>	<b>2</b>
<b>CONSPIRACY, ATTEMPT, COMPLICITY</b>		
Conspiracy	8	0
Attempt Felony	5	0
Attempt Firearm	0	1
Attempt	19	18
Complicity Felony	13	6
Complicity Attempt	0	6
Complicity	62	23
<b>TOTAL</b>	<b>107</b>	<b>54</b>
<b>DRUG OFFENSES</b>		
Corrupt another with Drugs	0	1
Trafficking In Drugs	81	99
Complicity Drug Trafficking	2	0
Attempt Drug Trafficking	0	1
Illegal Cultivation Of Marihuana	1	2
Drug Preparation	93	24
Aggravated Drug Preparation For Sale	2	5
Aggravated Possession of Drugs	12	12
Possess Dangerous Drug	1	1
Possess Hashish	1	1
Possess Cocaine	125	89
<b>DRUG OFFENSES CON'T</b>	<b>2000</b>	<b>2001</b>
Posses Drug	21	21
Possess Heroin	1	0
Possess LSD	2	2
Possess Marihuana <100 Grams	673	534
Possess Marihuana >100 Grams	6	1
Drug Abuse	8	13
Possess Drug Abuse Instrument	1	0
Possess Drug Paraphernalia	164	143
Deception To Obtain Dangerous Drug	0	3
Illegally Process Drug Document	1	5
Abuse of Harmful Intoxicant	3	1
Possess Counterfeit Controlled Subst	22	19
Trafficking Counterfeit Controlled Subst	1	1

## Hamilton County Juvenile Court

Counterfeit Substance	1	0
Counterfeit Substance To Sell	1	0
Agg. Trafficking Counterfeit Cont. Subst	2	0
<b>TOTAL</b>	<b>3,225</b>	<b>2,979</b>
<b>SEXUAL OFFENSES</b>		
Complicity Rape	0	1
Rape	112	107
Attempt Rape	6	2
Sexual Battery	6	4
Gross Sexual Imposition	60	44
Sexual Imposition	15	22
Importuning	1	0
Voyeurism	1	0
Public Indecency	14	16
<b>TOTAL</b>	<b>215</b>	<b>196</b>
<b>PROSTITUTION</b>		
Soliciting	10	7
Loiter to Engage in Prostitution	0	1
Loiter to Solicit after HIV Positive	0	1
<b>TOTAL</b>	<b>10</b>	<b>9</b>
<b>OBSCENITY</b>		
Obscenity Pandering	0	1
Obscenity Use of Minor in Nudity	0	2
<b>TOTAL</b>	<b>0</b>	<b>3</b>
	<b>2000</b>	<b>2001</b>
<b>ARSON</b>		
Aggravated Arson	35	47
Complicity Aggravated Arson	0	17
Arson	35	39
Complicity Arson	0	1
Attempt Arson	0	2
<b>TOTAL</b>	<b>70</b>	<b>106</b>
<b>DISRUPTION, VANDALISM</b>		
Disrupt Communication Services	2	0
Disrupt Transport.Utility Services	6	12
Vandalism	64	57
Complicity Vandalism	1	1
Complicity Criminal Damage	2	8
Attempt Criminal Damage	0	1
Criminal Damaging/Endangering	621	527
Criminal Mischief	118	75
Complicity Criminal Mischief	1	1
<b>TOTAL</b>	<b>815</b>	<b>682</b>

## Hamilton County Juvenile Court

<b>ROBBERY</b>		
Complicity Aggravated Robbery	25	16
Aggravated Robbery	115	159
Complicity Robbery	6	11
Robbery	141	157
<b>TOTAL</b>	<b>287</b>	<b>343</b>
<b>THEFT AND FRAUD MISCELLANEOUS</b>		
Receiving Stolen Property > \$100,000	2	0
Receiving Stolen Property >\$500	130	95
Complicity Receiving Stolen Property	3	2
Attempt Receiving Stolen Property	1	0
Receiving Stolen Property <\$500	172	143
Complicity Receiving Stolen Property	0	1
Receiving Stolen Property > \$5,000	198	373
<b>TOTAL</b>	<b>506</b>	<b>614</b>
<b>GAMBLING</b>		
Gambling	0	1
Public Gaming	13	10
<b>TOTAL</b>	<b>13</b>	<b>11</b>
	<b>2000</b>	<b>2001</b>
<b>INCITING RIOT</b>		
Inciting To Violence	3	1
Aggravated Riot inmate	2	0
Aggravated Riot - No Weapon	0	16
Riot -Four or More	1	1
Riot -Four or More	3	3
Failure To Disperse	3	1
<b>TOTAL</b>	<b>12</b>	<b>22</b>
<b>DISORDERLY CONDUCT</b>		
Disorderly Conduct	1,510	1,330
Disorderly Conduct While Intoxicated	54	29
Complicity Disorderly Conduct	0	2
Misconduct At Emergency	1	3
<b>TOTAL</b>	<b>1,565</b>	<b>1,364</b>
<b>HARASSMENT</b>		
Telephone Harassment	24	14
Telecommunication Harassment	0	17
	<b>24</b>	<b>31</b>
<b>FALSE ALARMS</b>		
Complicity Inducing Panic	3	2
Inducing Panic	89	91

## Hamilton County Juvenile Court

False Alarm	29	40
Complicity False Alarm	0	2
<b>TOTAL</b>	<b>121</b>	<b>135</b>
<b>ENDANGERING CHILDREN</b>		
Endangering Children	10	9
Interfere With Custody	1	1
Contribute to Unruliness	3	2
<b>TOTAL</b>	<b>14</b>	<b>12</b>
<b>DOMESTIC VIOLENCE</b>		
Domestic Violence	467	542
Domestic Violence - Felony	104	96
<b>TOTAL</b>	<b>571</b>	<b>638</b>
	<b>2000</b>	<b>2001</b>
<b>CRIMES AGAINST JUSTICE</b>		
Impersonating An Officer	1	2
<b>TOTAL</b>	<b>1</b>	<b>2</b>
<b>BRIBERY, INTIMIDATION, RETALIATION</b>		
Intimidation	18	24
Retaliation	0	1
<b>TOTAL</b>	<b>18</b>	<b>25</b>
<b>WEAPONS CONTROL</b>		
Complicity Carry Concealed Weapon	1	0
Carry Concealed Weapon Felony	5	5
Carry Concealed Weapon	101	112
Illegal Poss Object Indist From Firearm	1	6
Poss Concealed Weapon-School	0	24
Weapon On School Property	61	29
Weapon Under Disability	8	14
Firearm Transport Loaded	1	3
Firearm Transport Unloaded	2	2
Firearm School Zone	0	5
Discharge Firearm Near School/Habitat	2	0
Possess Dangerous Ordnance	8	5
Possession Of Criminal Tools	68	96
<b>TOTAL</b>	<b>258</b>	<b>301</b>
<b>MISCELLANEOUS OFFENSES</b>		
Ethnic Intimidation Agg. Menacing	1	11
Ethnic Intimidation Criminal Damage	2	1
Ethnic Intimidation	4	8
Contaminate Substan. For Human Use	0	4

## Hamilton County Juvenile Court

<b>TOTAL</b>	<b>7</b>	<b>24</b>
<b>FIREWORKS VIOLATIONS</b>		
Discharge Fireworks	4	8
Possess Fireworks	1	6
<b>TOTAL</b>	<b>5</b>	<b>14</b>
<b>NUISANCES</b>		
Littering	5	2
<b>TOTAL</b>	<b>5</b>	<b>2</b>
	<b>2000</b>	<b>2001</b>
<b>LIQUOR CONTROL LAW</b>		
Fictitious- Improper ID Or License	9	1
<b>TOTAL</b>	<b>9</b>	<b>1</b>
<b>PHARMACISTS, DANGEROUS DRUGS</b>		
Sell Buy Possess Dangerous Drug	1	5
Illegal Possession of Prescription Drug	1	0
<b>TOTAL</b>	<b>2</b>	<b>5</b>
<b>HABITUAL TRUANCY</b>		
Habitual Truancy - Prior Adjudication	1	0
Chronic Truancy	191	910
<b>TOTAL</b>	<b>192</b>	<b>910</b>
<b>VIOLATIONS</b>		
Violation Of Court Order	22	14
Violation Of Court Order - Curfew	663	541
Violation Of Court Order - Incurigible	670	763
Violation Of Court Order - Probation	1,112	872
Violation Of Court Order - Placement	758	861
Violation Of Court Order - Runaway	1,061	1,030
Violation Of Court Order - Truancy	1,302	822
Violation Of Court Order - Work Detail	703	563
Violation Of Court Order - EMU-Adult	1	0
Violation Of Court Order - EMU	139	134
Violation Of Court Order - Stay Center	234	294
Violation Of Court Order - Tobacco	59	13
Parole Violation	337	345
Underage Tobacco	0	17
<b>TOTAL</b>	<b>7,061</b>	<b>6,269</b>
<b>LOCAL ORDINANCE</b>		
Miscellaneous Township Offenses	136	147
<b>TOTAL</b>	<b>136</b>	<b>147</b>



## DEMOGRAPHICS

### AGE, RACE, AND GENDER

#### JUVENILES CHARGED WITH DELINQUENT OFFENSES

	AGE	<=5	6	7	8	9	10	11	12	13	14	15	16	17	18	TOTAL
WHITE MALE		1	0	0	6	10	15	49	70	121	205	297	399	473	31	1,677
WHITE FEMALE		0	0	0	1	1	1	9	25	66	125	176	184	180	9	777
AFRICAN AMER MALE		0	3	6	16	47	87	110	186	281	386	518	621	625	90	2,976
AFRICAN AMER FEMALE		0	0	0	1	10	18	38	88	163	227	309	321	280	8	1,463
AFRICAN AMER UNKNOWN		0	0	0	1	0	0	0	1	0	0	1	0	0	0	3
BI-RACIAL MALE		0	0	0	1	0	0	1	2	2	3	7	4	9	1	30
BI-RACIAL FEMALE		0	0	0	0	0	0	1	1	1	3	5	4	2	0	17
HISPANIC MALE		0	0	0	1	0	0	0	0	0	1	2	3	1		8
HISPANIC FEMALE		0	0	0	0	0	0	0	0	1	0	4	0	3	0	8
ORIENTAL MALE		0	0	0	0	0	1	0	0	2	3	0	2	1	1	10
ORIENTAL FEMALE		0	0	0	0	0	0	1	0	0	0	2	1	0	0	4
UNKNOWN/OTHER MALE		0	0	0	0	0	2	3	4	5	5	7	6	15	1	48
UNKNOWN/OTHER FEMALE		0	0	0	0	2	0	0	1	4	5	12	8	9	0	41
UNKNOWN/UNKNOWN		0	0	0	2	0	3	1	3	1	1	2	3	3	0	19
<b>TOTAL</b>		<b>1</b>	<b>3</b>	<b>6</b>	<b>27</b>	<b>70</b>	<b>127</b>	<b>213</b>	<b>381</b>	<b>647</b>	<b>964</b>	<b>1,340</b>	<b>1,556</b>	<b>1,601</b>	<b>141</b>	<b>7,081</b>

#### JUVENILES CHARGED WITH UNRULY OFFENSES

WHITE MALE	1	0	0	2	0	1	2	4	12	12	22	23	30	0	109
WHITE FEMALE	0	0	0	0	0	1	1	5	12	29	34	34	22	3	141
WHITE UNKNOWN	0	0	0	0	0	0	0	0	0	0	0	0	1	0	1
AFRICAN AMER MALE	0	1	1	1	2	4	6	9	21	21	28	23	15	1	133
AFRICAN AMER FEMALE	0	0	0	1	1	1	5	12	18	44	51	44	24	1	202
AFRICAN AMER UNKNOWN															0
BI-RACIAL MALE	0	0	0	0	0	0	0	0	0	0	0	0	1	0	1
BI-RACIAL FEMALE	0	0	0	0	0	0	0	1	0	0	2	0	0	0	3
HISPANIC MALE	0	0	0	0	0	0	0	1	1	0	0	0	0	0	2
HISPANIC FEMALE	0	0	0	0	0	0	0	0	0	1	0	1	0	0	2
UNKNOWN MALE	0	0	0	0	0	1	0	1	1	0	1	0	0	0	4
UNKNOWN FEMALE	0	0	0	0	0	1	2	0	0	0	0	4	1	0	8
UNKNOWN UNKNOWN	0	0	0	0	0	0	1	0	0	0	0	0	0	0	1
<b>TOTAL</b>	<b>1</b>	<b>1</b>	<b>1</b>	<b>4</b>	<b>3</b>	<b>9</b>	<b>17</b>	<b>33</b>	<b>65</b>	<b>107</b>	<b>138</b>	<b>129</b>	<b>94</b>	<b>5</b>	<b>607</b>

## JUVENILES CHARGED WITH DELINQUENT AND UNRULY OFFENSES

WHITE MALE	0	0	0	0	1	3	2	5	13	19	26	50	37	2	<b>158</b>
WHITE FEMALE	0	0	0	0	0	0	0	7	12	27	25	20	7	0	<b>98</b>
AFRICAN AMERICAN MALE	0	0	0	4	2	3	6	11	36	46	47	57	24	0	<b>236</b>
AFRICAN AMERICAN FEMALE	0	0	0	0	0	0	2	20	27	32	35	36	11	0	<b>163</b>
BI-RACIAL MALE	0	0	0	0	0	0	1	1	0	0	1	1	0	0	<b>4</b>
BI-RACIAL FEMALE	0	0	0	0	0	0	0	1	2	0	0	1	0	0	<b>4</b>
HISPANIC MALE	0	0	0	0	0	0	0	0	0	0	1	1	0	0	<b>2</b>
UNKNOWN MALE	0	0	0	0	1	0	0	0	2	1	0	1	3	0	<b>8</b>
UNKNOWN FEMALE	0	0	0	0	0	0	0	0	0	1	0	0	1	0	<b>2</b>
ORIENTAL MALE	0	0	0	0	0	0	0	0	0	1	0	0	0	0	<b>1</b>
<b>TOTAL</b>	<b>0</b>	<b>0</b>	<b>0</b>	<b>4</b>	<b>4</b>	<b>6</b>	<b>11</b>	<b>45</b>	<b>92</b>	<b>127</b>	<b>135</b>	<b>167</b>	<b>83</b>	<b>2</b>	<b>676</b>

TOTAL MALES	5,407
TOTAL FEMALES	2,933
TOTAL UNKNOWN	24
<b>8,364</b>	

TOTAL WHITE	2,961
TOTAL UNKNOWN/OTHER	131
TOTAL AFRICAN AMERICAN	5,176
TOTAL BI-RACIAL	59
TOTAL HISPANIC	22
TOTAL ORIENTAL	15
<b>GRAND TOTAL</b>	<b>8,364</b>

## CRIMES AGAINST ELDERLY AND HANDICAPPED

The following report, mandated by section 2151.18 of the Revised Code, reflects the number of complaints filed with the court, that allege that a child is a delinquent child, in relation to which the court determines under division (D) of section 2151.27 of the Revised Code that the victim of the alleged delinquent act was sixty-five years of age or older or permanently and totally disabled at the time of the alleged commission of the act.

TYPE OF OFFENSE	PROPERTY	THEFT	VIOLENT
DELINQUENT COMPLAINTS FILED	9	21	26
ADJUDICATIONS	4	14	11
ADJUDICATION & RESTITUTION	4	8	0
COMMITTED TO AN INSTITUTION	0	1	0
TRANSFERRED FOR CRIMINAL PROSECUTION	0	0	1

## ADULT JURISDICTION

---

### DEPENDENCY, NEGLECT AND ABUSE

The Dependency Department is responsible for all complaints filed by public and private agencies alleging a child to be dependent, neglected, and/or abused. If a child is placed in the care of an agency, the dependency department must approve and monitor the implementation of the plan. The goals of the statutes that define the operation of the department are to protect children, to respect the rights of parents, and to obtain permanent homes for children in a timely fashion.

	2000	2001
NEW FILINGS	638 cases 1,153 children	622 cases 1,107 children
FILINGS DISMISSED	265 children	237 children
INITIAL DISPOSITIONS		
Direct Custody to Individual	115 children	143 children
Protective Supervision	203 children	167 children
Temporary Custody	393 children	443 children
Permanent Commitments	80 children	79 children
Planned Permanent Living Arrangement	56 children	60 children

During 2001, in addition to the 167 children placed under protective supervision as a first disposition, there were 96 children modified from a disposition of agency custody to protective supervision. Of the 260 temporary commitments granted, 16 were granted on delinquency charges.

During 2001, in addition to the 79 children permanently committed as a first disposition, 58 were modified from temporary commitments or planned permanent living arrangements to permanent commitment.

During 2001, in addition to the 60 children placed in planned permanent living arrangements as a first disposition, 63 children were modified from a temporary commitment, permanent commitment or protective supervision to planned permanent living arrangement.

## NEW FILINGS WERE DISPOSED OF IN THE FOLLOWING MANNER:

	2000	2001
Dismissals	24%	22%
Direct Custody to Individual	10%	11%
Protective Supervision	18%	15%
Temporary Commitments	36%	40%
Permanent Commitments	7%	6%
Planned Permanent Living Arrangement	5%	6%

## CHILDREN UNDER AGENCY CUSTODY OR SUPERVISION AT YEAR END

	2000		2001	
Protective Supervision	168	children	119	children
Temporary Commitments	387	children	480	children
Permanent Commitments	333	children	358	children
Long Term Foster Care	434	children	429	children
<b>TOTAL</b>	<b>1,322</b>	children	<b>1,386</b>	children

At year-end 2001, there were 1,267 children under temporary, permanent and long term foster care to social service agencies in Hamilton County. There were 119 children under court ordered protective supervision. The total number of children under court ordered agency care and supervision totaled 1,386.

## OTHER COMPLAINTS FILED

	2000	2001
ADULT MISDEMEANORS		
Failure to Send Child to School	1,195	2,160
Endangering Children	24	19
Tend to Cause Delinquency of a Minor	39	66
Contribute to Delinquency	23	3
Interference with Custody	6	0
Adult Probation Violation	8	5
Fail to Supervise Child	28	3
Violate Protective Order	1	0
Corruption of a Minor	1	0
Unlawful Sexual Conduct	0	1
PARENT CHILD RELATIONSHIP	1,271	1,314
SUPPORT	1,877	2,452
CUSTODY	1,159	1,095
VISITATION	15	125
HABEAS CORPUS	0	0
PERMISSION TO MARRY	1	0
PROBATE	0	0
PARENTAL BYPASS	1	0

## SOME MOTIONS FILED

	2000	2001
CONTEMPT	3,078	4,766
MODIFICATION OF SUPPORT	1,131	1,092
ADMINISTRATIVE MODIFICATION ORDER	582	536
CSEA REQUEST FOR CHANGE	1,784	2,197

## HEARINGS CONDUCTED

	2000	2001
TOTAL HEARINGS CONDUCTED	130,390	132,866
AVERAGE NUMBER OF HEARINGS PER FILING	3.01	3.02

## PRE TRIAL SERVICES

---

### INTERVENTION UNIT

The Hamilton County Juvenile Court Intervention Unit, a Division of Court Services, serves families in crisis as the result of rebellious and incorrigible behavior exhibited by youth 5-17 years old. Attempts are made to contact the family within twenty-four hours of the referral being processed, and an appointment is scheduled within 10 days. If the parent(s) or guardian(s) is unwilling/unable to attend a session at the Intervention Unit, a Family Counselor will provide crisis intervention via the telephone. It is the Intervention Unit's goal to provide ongoing treatment services to at least 10% of all families referred.

The Intervention Unit received 1,266 cases through the 2001 calendar year. There was a slight increase in referrals when compared to the previous year. The range of problems presented by the families remains constant, yet there has been an increase in complaints being filed against youth less than 12 years of age, as well as those having received prior mental health treatment. Minority populations comprised nearly 63% of closures in 2001, and 56% of the total cases closed were females. Of all cases referred and closed, chemical dependency, mental illness, and physical/sexual abuse remain significant factors affecting family functioning. It should be noted that one Family Counselor position was vacant the first five months of the year, leaving only two Counselors to manage referrals and provide direct services. For the first time since May 2000, the Intervention Unit was fully staffed from 6/2001-12/2001. 1,313 formal appointments were scheduled for families throughout the year.

Of the 1,268 cases closed, the Intervention Unit provided or offered services to 78% of families referred. Services provided to clients include: First Time Runaway Program case management, single session interventions with a family counselor, ongoing treatment services, telephone interventions and the vouchering of services. 22% of cases referred either failed to respond to repeated attempts to schedule services, or the youth's warrant remained active for a period over 3 months. 8% of the families with whom a session with a counselor was scheduled failed to attend the session. In many instances, the Counselors have scheduled a number of appointments with such clients prior to case closure, with the hope that the family would utilize services. The duration of a single session intervention is typically 2-3 hours, with treatment sessions lasting 1-2 hours. Telephone interventions are provided to clients who are unable to utilize services due to: work schedules, distance from the Youth Center, conflicts with child care, disinterest in pursuing counseling as a relief from conflict, or problems have ceased following the filing of the initial referral. Such cases are typically monitored by a counselor for 30+ days, should problems again arise. Families are encouraged to maintain contact with the counselor during this period, and often call for advice after the case is closed. The Intake Coordinator for the First Time Runaway Program provides ongoing case management from the initial filing of the charge through final disposition of the case. Regular phone contact is maintained with the parent(s) or guardian(s), offering guidance and supportive counseling through the process.

A breakdown of referrals and referral sources for 2001 is listed below:

### SOURCE OF REFERRAL

Dependency Court Magistrates	0
First Time Runaway Program	481
Clerk's Office-Unofficial Referrals	637
Delinquency Court Judges/Magistrates	124
Probation Officers	19
Township-Unofficial Dockets	5
<b>TOTAL</b>	<b>1,266</b>

### PROGRAM EVALUATION/RECIDIVISM RATES

With the conversion of the Juvenile Court to the JCMS client management system, the Intervention Unit is now able to assess the effectiveness of services based upon youth becoming re-involved with the Court System. Recidivism in this case is defined as any official Court contact, be that for unruly offenses (i.e. Runaway, Curfew Violation, etc...) or delinquency offenses. The following results may be negatively skewed, since Counselors may encourage parents to pursue involvement with Juvenile Court in order to hold their child accountable- while at the same time participating in some form of treatment. In order to provide a more meaningful appraisal positive outcome, the population was drawn from closures from 7/1/2000-11/13/2001. We thereby can provide a recidivism range for 3 months following case closure.

<b>REFERRAL SOURCE</b>	<b>TOTAL CLOSED</b>	<b>NEW FILINGS</b>	<b>NON RECIDIVISM</b>
Dependency Court Magistrates	1	0	100%
First Time Runaway Program	666	202	70%
Clerk's Office Unofficial Referrals	724	124	83%
Delinquency Court Judges/Magistrates	194	69	64%
Probation Officers	34	15	66%
Township Unofficial dockets	6	1	83%
<b>TOTALS</b>	<b>1,625</b>	<b>411</b>	<b>75%</b>

TOTAL CASES DIVERTED FROM OFFICIAL JUVENILE COURT DOCKETS 1,214

- Percentage of referrals utilizing some form of IU service 70%
- Percentage of 'no show' for scheduled appointments 9%
- Percentage of 'no response' referrals 20%
- Percentage of remaining 'active warrants' 1%

## RESULTS OF CLIENT SURVEY

The Intervention Unit conducted a Client Satisfaction survey during the month of November 2001 in order to receive a very general impression of families response to services provided. Clients who could read and /or had the time to complete the survey are included in the results below.

### PARENTAL RESPONSES: (TOTAL OF 32 RESPONSES)

- |   |          |                  |      |
|---|----------|------------------|------|
| 1) Were you happy with the services you received today? | Yes 100% | No 0%            | ? 0% |
| 2) Do you feel the counselor understood your problem?   | Yes 100% | No 0%            | ? 0% |
| 3) Do you feel you were treated with respect?           | Yes 97%  | No 3%            | ? 0% |
| 4) Was this a helpful service?                          | Yes 97%  | No 0%            | ? 3% |
| 5) Rate your opinion of the Intervention Unit:          |          |                  |      |
| Waste of Time   | 0%       | Somewhat Helpful | 13%  |
| Undecided   | 0%       | Very Helpful     | 87%  |

### YOUTH RESPONSES: (TOTAL OF 32 RESPONSES)

- |   |         |                  |       |
|---|---------|------------------|-------|
| 6) Were you happy with the services you received today? | YES 85% | NO 6%            | ? 9%  |
| 7) Do you feel the counselor understood your problem?   | YES 85% | NO 9%            | ? 6%  |
| 8) Do you feel you were treated with respect?           | YES 87% | NO 0%            | ? 13% |
| 9) Was this a helpful service?                          | YES 78% | NO 13%           | ? 9%  |
| 10) Rate your opinion of the Intervention Unit:         |         |                  |       |
| Waste of Time   | 6%      | Somewhat Helpful | 32%   |
| Undecided   | 34%     | Very Helpful     | 28%   |



## **VOLUNTEER REFEREE PROGRAM**

Two referee diversion programs exist in Hamilton County in an attempt to divert youth from official delinquent records.

Judge Benjamin S. Schwartz of Hamilton County Juvenile Court initiated the Volunteer Referee Program in 1958. It was the first program of its kind in the country. Attorneys were appointed by the Court as Volunteer Referees to hear unofficial cases of a minor nature within their own community. The program has continued with few modifications over the years, under Judges William J. Morrissey; Olive L. Holmes; David E. Grossmann; John P. O'Connor, Sylvia Sieve Hendon, and Thomas R. Lipps.

Local businesses, schools, police and citizens refer cases. The advantage of the program is that cases are heard within the youth's own community. Generally the cases are heard in the evening, as it is more convenient for all parties to participate. There is high visibility of the child for enforcing house arrest, work details and other measures of discipline.

In 2001, there were 750 youth served by the Volunteer Referee Program. Of this, 69 youth were referred back to the police or school for further action. A total of 681 juveniles were handled unofficially and diverted from the official system.

In March of 1975 the Citizen's Committee on Youth, Youth Services Bureau Program established a Court Liaison who serves as an unofficial hearing officer and referral agent to link unofficial unruly and minor misdemeanor youth to community services. Supervision of the program is handled jointly by the Citizen's Committee on Youth and the Executive Director of Docketing and Case Management Department, Hamilton County Juvenile Court.

During 2001, a total of 1,848 were served by the Unofficial Hearing Officer. A total of 36 juveniles were referred to the official docket. A total of 1,812 were diverted from the official system.

## **YOUTH CENTER**

The Youth Center operates a 160-bed secure detention center. In 2002, the Youth Center processed 11,158 youth. More specific information about this facility is detailed in the Youth Center section of this report.

## **ATTENDANCE PROGRAM**

The Attendance Program is a collaborative effort between the Juvenile Court, Family Services of Cincinnati, Cincinnati Public Schools, and the St. Bernard School District. The primary goal is to reduce absences within the schools. The schools presently targeted include: Oyler Elementary, Whittier Elementary, Gamble Elementary, Saylor Park Elementary, Quebec Heights Elementary, Vine Street Elementary, Schwab Elementary, Chase Elementary, Elmwood Place Elementary, St. Bernard Elementary and St. Bernard Jr. and Sr. High. The Attendance Clerk and Visiting Teacher/Attendance Program Liaison identify students with poor attendance, and make efforts to address underlying issues effecting attendance without Court involvement. When these efforts fail to produce positive results, the student and the parent(s)/guardian(s) are cited to Court. Such hearings are held on a weekly basis in the above-targeted schools. The hearing process, be it informal or official, focuses on the root problems contributing to absenteeism. The ultimate goals are to increase attendance, provide support to families, and interrupt the pattern that could lead to delinquency. The resources of the Court, school and the community are utilized to support families in their effort to correct the problem. The Case Manager, provided by Family Services, works closely with selected families by providing direct services and arranging for adjunctive programming. The Juvenile Court provides a Magistrate and Case Presenter for the hearings. All schools that participate in the collaboration have shown improved daily attendance and parent participation.

## **COMMUNITY COURT PROGRAM**

The Community Court process was created as an outgrowth of the very successful Unofficial Juvenile Court Referee program. Like the unofficial program, the Community Court is a partnership between the Court, the Community and Law enforcement. However, the Community Court is an official Juvenile Court that operates remotely in the participating communities. A Juvenile Court Magistrate, Case Manager and Probation Officer staff the Court. Law Enforcement partners are required to provide security during the hours of operation of the program.

The Community Court process was designed as an effort to create a meaningful partnership between the Court, Community and Law Enforcement. The partnership is an important and necessary linkage in creating a meaningful and responsive juvenile justice system. The major emphasis of the community court is to provide an environment in which minor or low level cases may be processed in a meaningful and informative way. Many times the low level or minor offenses are shuffled through the system with little or no attention. The community court, consistent with national trends and research, provides an opportunity to make a meaningful impact on minor offenders and address the causes of inappropriate behavior before it manifests into more serious actions. This early intervention is best and least expensive way to prevent future delinquency. Further, the community court creates an opportunity for law enforcement and communities to provide the court with valuable information about the issues facing the families and youth of the community. This information in turn puts the Court in the best possible

position to develop a disposition that is not only appropriate but also meaningful for all the participants of the process. Currently there are 6 community courts.

## **MEDIATION RESIDENCY / PARENTING TIME MEDIATION PROGRAM**

### **OVERVIEW**

The Mediation Division of Hamilton County Juvenile Court has designed and implemented an in-house program to mediate civil cases with a primary focus on custody and visitation (residency and parenting time) disputes. The program has been operative since June 2001. The cases primarily consist of those where the parties have never been married and wish to proceed pro se in the resolution of their cases. The referrals originate at the filing stage as well as from magistrates who deem cases appropriate for mediation.

### **MEDIATOR SELECTION AND RETENTION**

The Division contracts with trained mediators whose experience in the field has consisted primarily of family mediation/dispute resolution. Their professional backgrounds range in experience from attorneys to social workers. The Division's mediation contracts are renewed annually. To ensure quality customer service, the Court offers ongoing training and roundtable discussions to help mediators stay abreast of client needs and to receive feedback from internal departments.

### **DATA RESULTS**

To date, the Mediation Division has received over 200 referrals. While new programs usually strive for a 50% agreement rate, the HCJC Mediation Program has reached agreement in over 65% of all cases that are mediated. The agreements are approved by the Chief Magistrate and incorporated by reference in a binding court order. Of the cases submitted for Magistrate approval, over 98% have become binding court orders. As part of the pilot phase of the program, client satisfaction surveys confirmed a high rate of satisfaction with the mediation process and outcomes.

### **SUMMARY**

Hamilton County Juvenile Court also mediates permanency cases which are administered separately via the Dependency docket. In summary, mediation has become an exciting venture that holds a number of possibilities to serve children and families in the County. The Mediation Division looks forward to increased capacity to serve clients via new mediation facilities that are currently under construction.

## **CHILD PROTECTION MEDIATION**

Hamilton County Juvenile Court was awarded an Adoption Opportunities grant by the U.S. Department of Health & Human Services in late 1998. The purpose of the grant was to develop and implement a Child Protection mediation program for Dependency cases, primarily Permanent Commitment (TPR) cases. Permanency Mediation, as an alternative to trial, is expected to show both a time and cost savings, as well as increased empowerment of families in planning permanent living arrangements for their children. The final evaluation summary will be complete by June 2002. We are also in the process of creating a project manual and corresponding video to serve as training materials nationwide to other jurisdictions interested in using Child Protection mediation. These training tools will be completed and ready for distribution by October 2002.

Since one of the stipulations of the grant required a collaborative effort among agencies, Hamilton County Juvenile Court and the Hamilton County Department of Jobs & Family Services together, contracted with St. Aloysius Orphanage to lead in developing the program, especially with regard to training and providing expert mediators. A steering committee of all involved participants in mediation has, and continues to meet monthly to ensure program objectives are being met, and to problem solve when necessary. In late 2000, we began a slow introduction to mediation of other types of cases generated off the Dependency docket (Temporary Commitment, Custody & Visitation). The numbers of referrals of these types of cases has gradually risen and now one case from each Day One docket is referred to mediation, with the expectation that this will eventually lighten Dependency dockets.

We are in the final year of our grant funding for this program. Preliminary statistics reveal that overall, 55% of mediated PC cases and 55% of mediated non-PC cases have reached agreement. The Magistrates have upheld 96% of the agreements in their totality.

## **DISPOSITIONS**

---

### **BOUND OVER TO THE GRAND JURY**

In 2001, the Judges bound over 65 juveniles to the Grand Jury, to be tried as adults.

### **OHIO DEPARTMENT OF YOUTH SERVICES**

The number of youth committed to the Department of Youth Services decreased from 197 in 2000, to 166 in 2001. In 2001, the Court revoked parole for 72 juveniles.

### **HILLCREST**

Hillcrest Training School operates 142 correctional/treatment beds for adjudicated delinquent youth placed by the Court. The program primarily serves youth adjudicated of felony offenses and offers a wide range of services, which include an on grounds school, substance abuse and sex offenders programming, and psychological services, to name a few. A total of 239 youth were referred to Hillcrest in 2001. More specific information about this facility is detailed in the Hillcrest section of this report.

### **PROBATION**

#### **MISSION**

Believing in the inherent value of each child, without prejudice, through community partnerships and a balanced approach, we use appropriate intervention to deter delinquent behavior. We hold adjudicated youth accountable, work to preserve the family unit, strive to ensure the safety of the community and promote the diligent exercise of victims' rights.

Probation and the work of the Department are defined under Section 2151.14 of the Ohio Revised Code. It is the duty of all department officers to carry out the orders of the Court and serve to protect the interest of the community. It is the responsibility of Probation Officers to use all suitable methods to aid youth on probation to bring about improvement in their conduct. During 2001, the Probation Department was staffed by the Chief Probation Officer, 2 Deputy Chief Probation Officers, 5 Probation Team Supervisors, 29 Probation Officers, 5 Probation Monitors, 4 Victim Impact Officers and 8 support staff. The Probation Department is accredited through the American Correctional Association.

In 2001, the Probation Department handled 2,246 investigations referred by the Court and 1,565 were supervised on Probation. Of these cases 824 successfully completed Probation, 239 were referred to Hillcrest School for placement, of which 213 were actually placed.

### ACA ACCREDITATION

On August 13, 2000 the Commission on Accreditation for Corrections Panel voted to award a three-year Accreditation to the department. The department was found to be in compliance at a rate of 99%. The auditors were very favorable regarding the organizational structure and quality of life within the department.

### JUVENILE MAJOR OFFENDER PROGRAM (JMOP)

The Juvenile Major Offender Program (JMOP) began in September of 1998 as a collaborative effort between the Hamilton County Juvenile Court Probation Department and various Police Agencies within Hamilton County to identify serious offenders on Probation and Aftercare and hold them accountable for behavior ordered by the Court. Accountability is enforced through after-hour home visits conducted by two-person teams of Police and Probation Officers riding in Police vehicles. These teams provide curfew checks and warrant service. The JMOP program signifies a departure from the usually separate supervision duties of Probation and law enforcement activities of the Police and combines them together to meet common established goals.

### PROGRAM GOALS

- To reduce further criminal activity and victimization.
- To work together to hold serious offenders accountable for behavior ordered by the Court and Hillcrest Training School.
- To establish and maintain information-sharing processes that enhance participating agencies' abilities to supervise and monitor program clients.
- To provide an immediate response to probation or aftercare youth not in compliance with probation rules or aftercare contracts.
- To reward offenders when found in compliance with probation rules or aftercare contracts.

### PARTICIPATING POLICE AGENCIES

Cincinnati Police Department  
Forest Park Police Department  
Springfield Township Police Department  
Sharonville Police Department  
Colerain Township Police Department

### OFFENDER CRITERIA

Youth referred to the program are on either Probation to the Probation Department or Aftercare to Hillcrest Training School. The majority of program clients have a history of felony offenses including

assaults or aggressive behavior, drug trafficking, theft, robbery, burglary, breaking and entering, sexual offending, weapons offenses or gang related activity. A small number are chronic repeat misdemeanor offenders.

## **JUVENILE MAJOR OFFENDER PROGRAM STATISTICS**

JURISDICTION	# OF Rides	#PO Shifts	# Youth Seen	# of Check s	# Home	#Not Home	% Home	No Answer	Warrant Attempts	Warrant Arrests	Other Arrests
Cincinnati	42	126	169	1,208	830	262	69%	116	109	9	2
Colerain	24	24	18	127	86	34	68%	7	16	1	0
Forest Park	25	25	20	119	81	34	68%	4	9	1	0
Sharonville	7	7	5	29	21	6	72%	2	0	0	0
Springfield	27	27	22	161	130	24	81%	7	11	4	0
<b>TOTALS</b>	125	209	234	1,644	1,148	360	70%	136	145	15	2

## **SPECIALIZED CASELOADS**

There are three specialized caseloads in the department, which are supervised by 5 officers and one monitor. They are Sex Offenders, Girls and Intensive Supervision. Individuals assigned to these caseloads receive more intensive supervision and programming than the general population.

## **SEX OFFENDER SPECIFIC CASELOAD**

Since 1989 the Hamilton County Juvenile Court Probation Department has been utilizing specialized assessments of adjudicated sexual offenders. This was part of continuum of care treatment approach that followed the youth through legal, treatment and aftercare settings. The objectives for providing such an approach were: 1.) To determine the general dangerousness of the behavior and threat to the community, current victim and potential future victims. 2.) To estimate the risk of the sexually aggressive behavior being repeated. 3.) To evaluate the specific social, family, environmental and behavioral treatment strengths and needs of the adolescent offender. 4.) To determine specific recommendations regarding the ideal course of intervention and treatment along with secondary recommendations should the ideal course not be possible. All youth adjudicated of a sexually oriented crime are assigned to the Sex Offender Specialist. In situations when the number of referrals is beyond the specialist's capacity, another officer who has been trained in sex offender assessment handles those cases.

## **GENDER SPECIFIC PROGRAMMING**

Gender specific programming was developed to address the specific needs of females and equip them with skills and determination necessary to make responsible, healthy lifestyle choices. In 2001, the department targeted felony and misdemeanor 1 girls as the population served by the female specialist. The department is currently planning the expansion of this programming to target all females under supervision.

### INTENSIVE SUPERVISION PROBATION

The Intensive Supervision Probation Unit is designed to provide increased structure, monitoring and supervision to selected youth who are 15 years of age or older, not amenable to traditional probation services, at risk of placement out of the home or facing the possibility of commitment to the Department of Youth Services. Youth will be closely monitored for compliance with a rigidly constructed plan that includes four phases. Each phase allows for increased privileges and decreased contact. Youth begin the program without privileges and earn privileges as they earn "credit days" for strict compliance with program expectations.

### VICTIMS UNIT

In November 1999, the department added a Victims Unit whose responsibility, as set forth in 2151.355H1ORC, is to collect victim's statements for the Court on cases where adjudication is made on an act of violence. In order to keep the needs of the victim separate from those of the juvenile, a separate unit was developed to handle this process. The unit has a supervisor, 3 investigators and a clerical position. In 2001, the unit completed 1206 Victim Impact Statements.

### ALTERNATIVE DEVELOPMENT PROGRAM

In response to a statewide effort to address the rate of suspensions, expulsions and dropouts, the Hamilton County Educational Service Center, in conjunction with Hamilton County Juvenile Court applied for grant monies to provide services to at risk students. The initiative was awarded \$270,000.00 over two years. The Probation Department supervisors, assigned to specific school districts, along with representatives from Mental Health meet regularly with school personnel to identify at risk students and develop service plans that will address the needs of the students with the hope of getting them back on track. These plans can involve participation in community and/or school based programming, alternative scheduling, work-study programs and mentoring. Referrals to Court may also be utilized in order to gain compliance from the youth and/parent.

### DRUG TESTING

A component of Probation Supervision is drug testing. This is done one of two ways. The department has trained its staff to collect urine on site in a specially designed cup that will give instant results. In 2000, 135 test were given resulting in 38 positive results and 91 negative. Eleven other positives were reported by youth prior to the on site test being given.

The other method of testing utilized by the department is to send the probationer with a parent to a lab that the department contracts with for such a service. In 2000, 403 such tests were conducted, with 196 positive, 204 negative and 3 invalid results.



## **COMMUNITY-BASED CONTRACTUAL SERVICES**

Youth who are involved with the Juvenile Court Probation Department often need additional services that involve community based programs and/or out-of-home placement. Probation Officers are responsible for coordinating referrals and providing supervision for youth placed within these programs.

The following are facilities where youth are placed, or programs to which youth are referred for services, including a brief description of the program as well as the number of youth placed in/referred to that program in 2001.

### Compass Diagnostic Unit

COMPASS (comprehensive assessment) is a secure 20-bed facility in which male youth adjudicated delinquent between the ages of 10 and 17 are placed to receive a comprehensive diagnostic assessment/evaluation and a report is presented to the Court to assist in the proper determination of disposition. Youth in the program receive a psychological evaluation, physical exam, substance abuse assessment and drug screen, educational evaluation, and attend family sessions conducted by licensed social workers. Upon completion of the assessments the staff consult with the Court Representative to decide a dispositional recommendation. If follow up services or further correctional measures are needed the Probation Department benefits by having extensive knowledge of the youth and the facilitated referrals for services. During 2001, of the 481 youth who were admitted to the program. The Court contracts for these services through the Talbert House.

### Youth Inc.

Youth, Inc. is a local shelter care facility that accommodates up to 30 youth per day in three houses; one of which serves females. Youth are referred there from the Youth Center (Detention) when it is appropriate to use a less restrictive environment that can provide short term treatment and shelter care pending a longer-term placement or a return home. Total number of male youth placed into this program was 487. Total number of female youth placed was 223.

### Alternatives

Alternatives is a 90-day residential drug and alcohol treatment program for youth aged 13-18. It is a division of the Talbert House. The Juvenile Court contracts for 5 beds per month and 25 youth were served; however some 76 youth were served in 2000 under this contract because the youth were subsidized by other funding sources above and beyond the Court's contracted amount. Youth who enter the program are admitting to a substance abuse problem and are willing to enter treatment. The program works with the families of the youth and provides step-down services in the form of intensive outpatient treatment and aftercare.

### Community Placements

The Juvenile court periodically utilizes various residential placements in the local community to address the multiple needs of some of its client population. Usually these placements are shorter-term (four months or less) and satisfy a need that outpatient services cannot. Several placements utilized in 2001 were the M-Pact Youth Services Group Home, the Lighthouse Independent Living Program, The Lighthouse Treatment Center and St. Joseph Orphanage Crisis Stabilization Unit. A total of 10 youth were directly referred for placement in 2001.

### Lighthouse Family Preservation

Lighthouse Youth Services provides a family outreach component for juveniles on probation who could benefit from a time-limited, structured in home therapy approach. Workers are on call 24 hours a day during the program and work with the entire family system to help strengthen the family unit. More than 40 families benefited from these services in 2001.

### Lighthouse Day Treatment

Lighthouse Youth Services provides a structured day treatment program for older male offenders who need assistance educationally and vocationally, as well as with substance abuse issues and other social issues. The program targets many juvenile felony offenders who are at risk of institutional placement or are just stepping down from placement. In 2001, the program served 52 Court youth. The program has added a sexual offender treatment component as well.

### NORCEN Sexual Offender Group

NORCEN Behavioral Health Systems, Inc. contracts with the Court to provide an ongoing Sexual offenders' group for youth adjudicated on sexual offenses who are able to be maintained in the community but who need intensive treatment for their behavior. The group can accommodate approximately 7-8 youth at any given time, and due to the lengthy nature of the treatment and the slow turnover that occurs. The Court had 10 youth serviced during 2001. The court contracts separately with NORCEN, with Dr. Stuart Bassman's A.W.A.R.E. program, and with therapist Randy Frost to provide some individual (and some group) work with several offenders whose level of functioning or youthful age precludes their participation in the NORCEN group.

### Community Outpatient Programs

Occasionally the Court contracts on a case-by-case basis with various local providers for various outpatient treatment services for probation youth. Some examples of this would include individual sexual offenders treatment, group substance abuse treatment, mentoring, violence prevention program

participation, theft prevention program participation, in-home therapy, and the like. A total of 19 youth received outpatient services from a variety of providers in 2001.

### Creative Connections

This managed care concept wrap around program has been in existence since 1995, but has been under the auspices of Beech Acres (utilizing staff from Lighthouse Youth Services as well) since November 1998. The overall mission and purpose, as well as service operations, remain the same: to purchase, evaluate, and monitor (as well as in some cases provide) a wide variety of services directed to the County's most needy and difficult to serve children and their families. At any given time, there are 83-85 Court youth being serviced by Creative Connections. From the program's inception, a total of 215 Court juveniles have been (or are being) served. Twenty-eight (28) new youth were referred into the program in calendar year 2001. Youth receive a wide array of services ranging from community-based to residential, and remain in the program for a significant period of time (average of 2 years) based on their issues and needs.

### Passages

A passage, a division of Talbert House, is a residential treatment program for felony and chronic misdemeanor female offenders. Using a gender-sensitive approach, the Passages program utilizes techniques to address issues of personal/family relationships, accountability, victimization and substance abuse. The program has two components; a 90-day program for chronic status and misdemeanor offenders, and a 180-day program for felony offenders. Passages also offers Intensive Outpatient and Aftercare services for residents. The Juvenile Court contracts for a minimum of 15 beds per month. In 2001, 43 youth were served in residential programming.

### The Bridge

After many years of discussions between the Juvenile Justice and Mental Health Systems on service programming for youth who cross both systems, a demonstration project was funded for three sites in Ohio. In Southwest Ohio four counties, including Butler, Clermont, Hamilton and Warren, collaborated and were awarded funding that lead to the Program now known as "The Bridge". Talbert House, the lead provider organization, opened the residential site in October 2000. This secure facility combines a strong behavioral management milieu, cognitive-behavioral groups and interventions with sophisticated child and adolescent psychiatric expertise to address the needs of this population, characterized by severe mental issues as well a history of aggressive behavior. The initial site has a capacity of 8 beds. A larger facility with a 15-bed capacity is scheduled to opened in the spring 2001. In 2001, the Probation Department placed 7 youth into the program.

### SUMA Gender-Specific Groups

The needs of adolescent female offenders are unique to their developmental needs, learning style and socialization process. Therefore, programming designed specifically for this population was

developed in August of 2000. The program consists of ongoing groups in an outpatient setting that addresses treatment issues specific to females as well as life skills and criminal thinking errors.

## **WORK DETAIL**

The Work Detail program is designed for adjudicated youth. The purpose of the Work Detail Program is to provide youth with a productive, short term work experience as a disciplinary measure, while giving the youth an opportunity to learn the principles of accountability and responsibility through various clean up and beautification projects.

Daily Work Detail	610
Saturday Work Detail	2,441
<b>TOTAL</b>	<b>3,051</b>

## **RESTITUTION, PURGE PAYMENTS, FINES AND COURT COSTS**

### RESTITUTION

In 2001, the total restitution collected was \$98,418.62

### FINES & COSTS COLLECTED

Fines	\$ 46,344.11
Court Costs	\$165,115.77
RRF & GRF	\$118,930.59
Computer Fees	\$ 63,104.50
Legal Research	\$ 18,971.99
Witness Fees	\$ 4,953.03
Attorney Fees	\$ 2,908.82
Guardian Ad Litem Fees	\$ 498.00
Purge Payments	\$161,333.02

## **DISMISSALS**

In 2001, 7,720 delinquent, unruly, and traffic cases were dismissed.



# **HAMILTON COUNTY JUVENILE COURT**

## **JUDGES' OFFICE**



## ADMINISTRATIVE SERVICES

---

### FINANCE DEPARTMENT

The Finance Department, under the Administrative Services Division is responsible for the preparation, expense and monitoring activity of the Annual County Operating budget and various state grants. Another major responsibility is the maintenance of employee sick and vacation records and production of the bi-weekly payroll. In addition, court ordered restitution is disbursed to the victim and child support for youth in placement is monitored.

	REVENUE	ADJUSTED APPROPRIATION	EXPENDITURES
JUDGES' OFFICE	\$11,134,701.64	\$18,639,190.57	\$17,082,931.62
YOUTH CENTER	\$1,721,395.67	\$11,259,419.27	\$9,676,311.34
HILLCREST	\$7,992,088.54	\$9,869,734.34	\$9,146,278.47
TOTAL	\$20,848,185.85	\$39,768,344.18	\$35,905,521.43

### HUMAN RESOURCES

Mission Statement: In support of the mission of Juvenile Court, the Human Resources Department provides leadership in the development and administration of policies and procedures that: 1.) meet the needs of prospective and current employees of Juvenile Court, 2.) adhere to government regulations and professional and ethical standards and 3.) is committed to proactive efforts in quality recruiting and the retention of professional and dedicated staff.

Human Resources provides quality human resources services that are relevant, prompt, accurate, and courteous in nature. In pursuit of the mission, above all else the Human Resources team will:

- Treat people with dignity and respect
- Be fair and consistent in actions.
- Work closely with all Departments to ensure the effective and efficient use of Human Resources.
- Contribute to employee development and creativity.
- Be accessible and make every effort to assist people.

The department provides a range of services to approximately 600 employees in three different divisions. The services currently provided include recruitment and referral of qualified classified employees; record maintenance, orientation and training, employee counseling/communications and background investigations.

In 2001, the Juvenile Court hired 119 employees. The total employees within three Juvenile Court Divisions equal 600, including part-time, and seasonal. There are 241 positions in the Judge's Office, 175 Hillcrest Training School, and 184 at the Youth Center.

## **INFORMATION SERVICES**

The Information Services Department is comprised of eleven full time employees and five contractors. The IS staff is responsible for the design, development, implementation, and support of all Juvenile Court computer hardware and software systems. The following is a summary of some of the Court's hardware and software systems that are supported by the IS staff:

- 553 Personal Computers
- Email and GroupWare messaging system
- 18 network servers and 7 local area networks
- Office automation systems
- Computer software applications
- Inter-network and Intra-network between divisions
- Juvenile Court Management System (JCMS)
- Intranet and Internet web sites
- Live scan fingerprint, palm print, and mug shot system
- EMC Clarion centralized storage system
- Video Court Reporting systems

The following projects are a subset of those, which were completed in 2001:

- The implementation of a new JCMS component which is a financial application that automates the collection and distribution of funds such as court costs, witness fees, bonds, and filing fees. This new system replaces an old antiquated FoxPro based Collection System.
- The modification of existing programs as well as the creation of new programs to support the new Senate Bill 179, which addresses the Juvenile Serious Offender Registration mandate.
- The implementation of new reporting programs and systems to support new requirements of internal Juvenile Court departments and external agencies.
- Provided consultation on the statewide Ohio Juvenile Detention System (OJDS).
- The implementation of new policies and security modules in our Juvenile Court Employee Database System.

- The implementation of additional functionality in our Juvenile Court Employee Database System to track seasonal employees.
- Enhanced the functionality of our Employee Database System to incorporate employee photos from our Employee Badge System.
- Redesigned and updated our Human Resources Database to facilitate a more efficient data collection process.
- Completed several database conversion database projects including conversions of the Collection Database and the Juvenile Probation Database.
- Implemented several new Intranet based systems including: Training Calendar and Training Class Scheduling System, Juvenile Probation Preliminary Case Plan System, Employee Phone Number and Photo System, Employee Recognition System, and Intranet based Human Resource and Probation Department Document Retrieval Systems.
- Implemented a centralized archive of the digital audio/video court recording system files.
- The creation of an automated process to import the Court's Dockets into the Digital Court Recording System.
- Continued the development of several new JCMS components, which address the integration of several stand-alone systems and databases into the court-wide JCMS system. The stand alone systems include a Dependency Case Management System, Residential Care and Treatment System, and several Microsoft Access based applications which are currently in use within the Court Services Department
- Improved internal customer assistance through the refinement of existing Help Line procedures as well as the implementation of new procedures.
- Installed 70 new personal computers throughout the court to fully utilize the potential of the available technology, software and applications.
- Replaced old antiquated laptop computer systems with new laptops in the Dependency Court Rooms.
- Deployed 120 new computer monitors throughout the court to replace old out dated monitors.
- Implemented new Transcription Devices for creating Court Transcripts from computer CD-ROMs which are created by the digital audio/video Court Reporting System.
- Implemented Web based access to the Court's email system for mobile users of the Court's email system.
- Implemented remote network access for Magistrates and Case Managers at the Anderson Community Court.
- Implemented Anti Virus Filtering Software to protect the Court's email servers and email users from destructive Internet based email viruses.
- Upgraded our network servers by adding more memory and larger capacity hard drives resulting in an extended hardware life cycle.
- Implemented new educational based software to enhance the educational quality at the Hillcrest Training School
- Upgraded our existing server backup hardware in order to backup the Court's computer based information in a more effective and efficient manner.
- Implemented network architecture and personal computer deployments necessary for the move of the Work Detail Department to it's new location.
- Resolved an average of approximately 284 help line calls per month based on an annual total of 3,410 calls allowing the Court's employees to fully utilize the installed technology.



## **OPERATIONS DEPARTMENT**

The basic function of the Operations Department is to determine the equipment and supply requirements for the Juvenile Court maintain an inventory of supplies commensurate with the requirements and place all necessary vendor orders. It is the department's responsibility to maintain control of Court equipment by proper record keeping, conducting an annual inventory and monitoring maintenance contracts. The Operations Department handles the majority of the purchasing for the Juvenile Court; therefore, the department is also responsible for authenticating all invoices for payment.

The Operations Department also maintains a Print Shop for the purpose of developing, duplicating and reproducing all the forms that the juvenile Court utilizes. The Operations Department is staffed with 2 full-time members. Along with the Operations Director, there is Supply Clerk/Printer.

## **SECURITY DEPARTMENT**

The Security Department is comprised of 12 full-time Law Enforcement Officers (1 full-time 1 Chief of Security, 1 Assistant Chief of Security and 10 Officers). These Officers have been certified by the Ohio Peace Officers Training Commission and have received specific and advanced training in defensive tactics, first aid, CPR/AED, behavioral and psychological aspects of incarceration, crisis intervention, behavior management, suicide prevention, evacuation training, close circuit monitoring, duress alarm, electronic stun device, RCIC, NCIC, NLETS, and LEADS certification and ASP Baton and firearms training, specific to courtroom settings.

The Security Department operates in compliance with the Supreme Court of Ohio, Court Security Standards. The Security Department is responsible for providing security and prisoner transports within Juvenile Court at 800 Broadway. They further provide security and prisoner transports to the courtrooms at the Youth Center, and are responsible for providing security at the Work Detail Program.

Additionally, the Security Department is responsible for the day-to-day operation of the court's Evidence Room. The responsibilities include chain of custody, security of evidence, receiving and releasing of evidence, and destruction of evidence/contraband per Court Order.

**MISSION STATEMENT:** To provide a safe and secure environment for everyone who comes into contact with the court and to ensure that this safety and security is delivered in the best interests of the staff, visitors and those who are incarcerated.

### **DEPARTMENT GOALS:**

1. To comply with the Court Security standards of the Supreme Court of Ohio
2. To comply with the Court Security Certification Standards of the Commission on Accreditation for Law Enforcement Agencies, Inc. (CALEA)

## **TRAINING AND DEVELOPMENT DEPARTMENT**

The Judges' Office Training and Development Department coordinated, scheduled and maintained records for 10,398 training hours for staff during 2001.

New classes made available to employees included, CPR; Standard First Aid; Word; Excel; PowerPoint; and GroupWise. An additional TV/VCR, LCD projector, projection screen, electronic print board and manikins to enable these classes to be offered enhanced the department's equipment resources.

In June, a Training Coordinator was added to the department, and is largely responsible for the additional classes.

The intranet site for online class registration was developed and implemented, as well as, a training advisory committee.

## DEPARTMENT OF COURT SERVICES

---

The Department of Court Services is charged with the implementation of a wide variety of court orders and services directed at intervention and prevention. There are five separate departments of Court Services. They are Intervention Unit, Mediation, Probation, Specialized Services and Work Detail. Services and programs in each of these areas work collaboratively or independently to provide services to youth and their families.

The Intervention Unit utilizes strategic brief therapy for families at risk prior to formal introduction into the court system and accepts referrals from Judges, Magistrates and Probation. Mediation is a new division of Court Services that oversees the expanding service of Juvenile Court in areas of school attendance, custody and support.

The Probation Department provides Investigation Reports and traditional probation services to the Court. The Department also provides specialized case care to address specific issues as presented by identified segments of offenders, i.e. Intensive Probation, Sex Offenders, and Females. Specialized Services works closely with Probation in locating services for adjudicated youth who are very young, have substance abuse issues, or a history of mental health problems.

Youth referred to the Work Detail Program perform a wide range of community services. The program is used to hold the youth accountable. The City of Cincinnati Adopt a Block Program, the Zoo, schools, and a variety of parks benefit from the community service. The Work Detail Program has collaborated with HCJC Hillcrest Training School by providing an educational program to assist youth in obtaining their G.E.D.

Court Services uses general funds and specialized grants to fulfill the mission of Hamilton County Juvenile Court.

## **CASE MANAGEMENT**

---

### **CLERK'S OFFICE**

In Hamilton County Juvenile Court, Judge Sylvia Sieve Hendon and Judge Thomas R. Lipps are Ex Officio Clerks of the Court. All cases filed are processed through either the Clerk's Office at 800 Broadway, or at the Youth Center Intake Department. The department consists of the Director, Chief Deputy Clerk, and 17 employees who screen and process new complaints and motions; send service to notify parties of court dates; prepare mandated, and internal statistical reports; establish restitution accounts; and process financial transactions for restitution, fines, court costs, purges, bond, and other ordered fees.

### **DEPENDENCY**

The Department consists of 8 full time Case Managers who work hand in hand with their individual Magistrate; process and prepare all cases; and field questions or concerns from clients, outside agencies, and other court departments. The Dependency System Tracking Coordinator gathers and enters all information for the computer data system; tracks case activity, identifying problems concerning data entry; and gathers statistical information.

The role of the Dependency Department is to hear cases where child abuse, neglect and/or dependency have been alleged by an agency, primarily the Department of Human Services. The Magistrates hear evidence to determine the validity of the allegations, determine what disposition is in the child's best interest and hold reviews to oversee the management of the case and delivery of services to the family and child(ren). The court focuses on securing a safe, permanent home for children in a timely fashion and strives to keep children with their parents or extended family whenever possible.

### **DOCKETING/CASE MANAGEMENT DEPARTMENT**

The Docketing and Case Management Department of the Juvenile Court is responsible for docketing and presenting all complaints filed, maintaining and updating all legal records, and maintaining audiocassettes for Magistrates' hearings. The department consists of 54 employees who handle cases involving Delinquency, Unruly, Custody, Visitation, Traffic, Adult Jurisdiction, Child Support, and Dependency. Jobs currently within the department include Docketing Clerks, Clerk Typists, Traffic Clerk, Warrant Clerk, Case Managers, Victim Assistance Case Manager, Unofficial Hearing Officer, Receptionists, School Case Managers, and file Clerks.

Each morning 10 dockets are scheduled for Delinquency and Unruly cases. Of those 10 dockets, 5 are scheduled strictly for arraignment (1 at the detention facility, and 4 at 800 Broadway), 5 are scheduled for trials and dispositions. Additionally, an unofficial docket is scheduled daily for first time offenders charged with minor misdemeanor offenses.

The Hamilton Court Juvenile Court and Cincinnati Public Schools designed a program to reduce truancy. With 8 elementary schools participating, the Court provides one Magistrate and one Case Manager daily to hear the dockets for Truancy and Failure to Send Child to School.

To process paternity, support and contempt cases, the Docketing and Case Management Department schedules a daily average of 2 dockets for contempt motions, and 2 dockets for paternity complaints and motions. A motion docket for support issues is scheduled 2 days a week.

## **MAGISTRATES**

---

There are twenty-seven Magistrates in Juvenile Court. The Magistrates are appointed by the Juvenile Judges to preside over the daily case management in Juvenile Court. The powers of a Magistrate are similar to those of a Judge, however, their decisions are subject to review and approval by the assigned Juvenile Court Judge. In Hamilton County, Magistrates determine delinquency, unruly, dependency, custody, paternity and child support matters in Juvenile Court.

Eight Magistrates are assigned to preside over cases involving allegations of dependency, neglect and abuse of children. They are responsible for deciding the temporary and permanent placement of children. The primary goal of the dependency process is to protect the best interest of the child.

The remaining Magistrates preside over delinquency, unruly, traffic, custody, paternity and child support. In delinquency, unruly and traffic matters, Magistrates preside at the plea and trial hearings and determine appropriate dispositions.

Juvenile Court has jurisdiction of paternity, custody and child support when a child is born out of wedlock, or when married parents have not filed for divorce. The Magistrates oversee proceedings to establish the proper parent/child relationship. In addition to establishing paternity, the Magistrates also set child support orders. A Magistrate has the authority to hold a parent in contempt of court and place them before the assigned Judge for imposition of a jail term for failure to pay child support. The Magistrate also decides custody and visitation matters in Juvenile Court. Custody and visitation decisions determine who shall be the residential parent, or custodian of a child and provides for the visitation schedule of a child.



# **HAMILTON COUNTY JUVENILE COURT**

## **YOUTH CENTER**



## YOUTH CENTER

---

In 2001, the Youth Center evaluated the effectiveness of the existing behavior management program. After review, a variety of changes were implemented, including increased training, staffing and modification to program incentives/consequences as well as enhanced youth orientation programming. As part of the improvements to youth orientation, the Orientation Handbook was redesigned and made available through closed circuit television viewed on the living units.

As part of the behavior management review, the concept for a Rights Pod was developed for those youth involved with the most serious behavioral disruptions. On this pod, the youth start with minimal programming opportunities and as behavior improves, they acquire more opportunities and privileges. This pod will become operational in early 2002.

The Youth Center maintains accreditations/certifications through the American Correctional Association, National Association of Suicidology, National Commission on correctional Health Care and the Ohio Department of Youth Services.

## INTAKE AND RELEASE PROCESS

The Juvenile Court Youth Center Intake Office is responsible for filing complaints, posting of bonds, and initial processing of all youth brought to the Youth Center. The Intake process includes the decision making process to admit a youth into secure housing, or to divert a youth to his/her legal guardian, or shelter care facility.

TOTAL INTAKES 11,158

Intake refers to all youth processed at the Youth Center; it is the total number of admissions and diversions. The number of youth processed in the Intake Office decreased by 13% from 12,821 in 2000 to 11,158 in 2001.

ADMISSIONS 5,947

Admission refers to all youth processed into a secure housing unit. The number of youth processed into housing decreased from 6,269 in 2000 to 5,947 in 2001. This represents a 5.1% decrease. The average length of care (9.5 days) and the average daily population (155.2) have reduced the facility days of care (sum of facility daily population) to 57,142 from a 2000 figure of 57,480 a reduction of 338 days of care.

DIVERSIONS 5,093

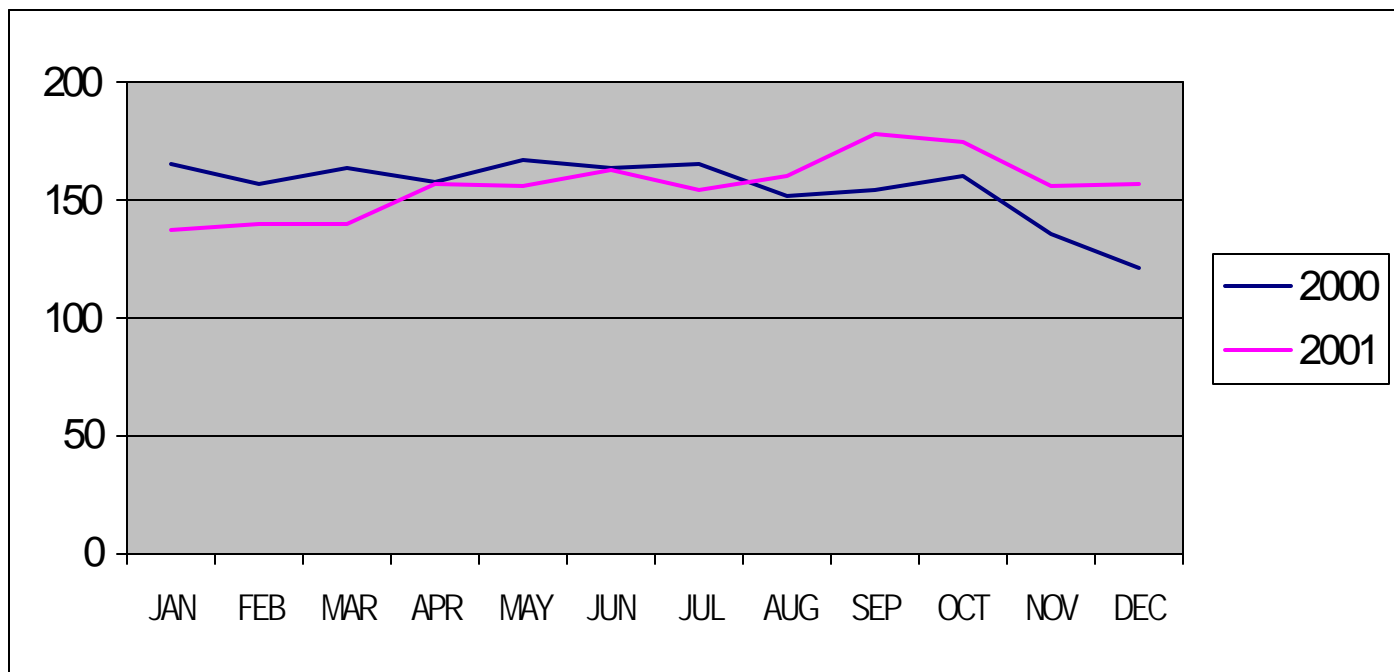
Diversion refers to any youth returned to the custody of his/her legal guardian, or shelter care facility without being admitted into a secure housing unit. The number of youth eligible for non-secure release, who were successfully diverted, decreased from 5,605 in 2000 to 5,093 in 2001. This represents a .09% decrease.

RELEASES 5,989

Release refers to any youth released to his or her legal guardian or placement facility, after being admitted into secure housing. The number of youth released from housing decreased from 6,238 in 2000 to 5,989 in 2001. This represents a 3.9% decrease.



## INTAKE AND RELEASE PROCESS



Facility Population                      155.26

The average daily population increased from 155.21 in 2000 to 155.26 in 2001. This represents an increase of .01%. The average length of care increased from 9.2 days in 2000 to 9.5 days in 2001. This represents a .04% increase. Total days cared for in 2001 was 57,142.

## **POPULATION MAKEUP**

### AGE UPON ADMISSION

	7	8	9	10	11	12	13	14	15	16	17	18	Total Admissions:
<b>Total:</b>	<b>0</b>	<b>2</b>	<b>10</b>	<b>32</b>	<b>88</b>	<b>258</b>	<b>561</b>	<b>919</b>	<b>1,411</b>	<b>1,351</b>	<b>1,293</b>	<b>22</b>	<b>5,947</b>

### PERCENT OF TOTAL ADMISSIONS BY AGE

7	8	9	10	11	12	13	14	15	16	17	18
0%	.03%	.17%	.54%	1.48%	4.34%	9.43%	15.45%	23.73%	22.72%	21.74%	.37%

### RACE / GENDER BREAKDOWN

RACE	MALES % of Population	FEMALES % of Population	TOTAL % Population
African-American	3,208/53.94%	1,082/18.19%	72.14%
Caucasian	1,101/15.51%	477/7.52%	26.03%
Other	80/1.35%	29/0.49%	1.83%
TOTAL	4,389/73.80%	1,558/26.20%	5,947/100%

### **FACILITY PROCESS ISSUES**

Complaints Filed 20,713

The total number of complaints filed in Hamilton County Juvenile Court during 2000 was 20,713. The 2000 totals are inclusive of complaints filed at the 800 Broadway Clerk's Office as well as at the Youth Center.

Intervention Reports Filed 2,531

The Youth Center uses Intervention Forms to record any behavior requiring disciplinary action, physical intervention and/or isolation time. Intervention Forms are also completed when Youth Center medical staff sees a youth. Any action requiring an Intervention Form is documented according to category.

<b>BEHAVIOR CLASSIFICATION</b>	
Mildly Disruptive Behavior:	29
Severely Disruptive Behavior:	1,389
Extremely Disruptive Behavior:	881
Safety and Security:	26
Medical	206
<b>TOTAL</b>	<b>2,531</b>

Physical Intervention 589

Physical Intervention occurred in 589 of the 2,531 behavior management incidents. This represents 23.2%% of the total incidents that required physical intervention.

Contraband Confiscated 39

Contraband refers to any item that may be a threat to safety and/or security, or used as a weapon. This includes, but is not limited to; matches, cigarettes, alcohol, drugs, and any item not specifically authorized for possession. During 2001, 39 items were confiscated. 17 drug items were recovered and released to the Cincinnati Police Department for prosecution or destruction. 3 weapons and 19 other types of contraband were recovered.

## **MEDICAL DEPARTMENT**

In April, the Medical Department was approved for on-site dental services. Construction for the dental clinic is continuing. A staff psychiatrist provides on-site psychiatric services for a caseload of 70 juveniles, which includes evaluations, psychotherapy, multidisciplinary and family conferences, and pharmacotherapy.

### MEDICAL DEPARTMENT DAILY HEALTH SCREENING

Health screenings are performed on new admissions 24 hours daily. The screening consists of questions to identify immediate health problems, to identify the presence of infectious diseases, and to assess fitness for placement in the general housing population. The medical history elicits information regarding current health concerns, exposure to sexually transmitted infections, psychiatric history (including previous suicide attempts), and substance abuse. The physical examination is performed by the Certified Nurse Practitioners and physicians from Children's Hospital Medical Center (CHMC) Teen Health Clinic. Laboratory testing is done on site and with the cooperation of the Cincinnati Health Department and TriHealth Laboratory. Licensed practical nurses administer medications and treatments, which numbered 23,739. Individual and group health education and counseling is provided. University Hospital, CHMC, and Elm Street Dental Clinic provide emergency services. Outpatient Clinics at

University Hospital and CHMC were utilized for non-emergency follow-up care, and includes Trauma, Surgery, Orthopedic, Hand Oral Surgery, and Teen Pregnancy. Among medical procedures, tuberculosis skin testing was performed on 2,951 residents. Positive reactions were detected in 42 or less than 1% of residents who were referred to the Tuberculosis Control Clinic. 496 laboratory specimens were collected for the diagnosis of sexually transmitted infections (STIs). Juveniles treated for STIs numbered 119.

Medical Screenings performed.	5,777
Medical Examinations performed.	2,167
Sick Call Exams.	1,355

### DRUG, ALCOHOL, & MEDICAL ASSESSMENTS UPON INTAKE

The Medical Department responds to the Intake Office whenever a youth is suspected of ingesting drugs or alcohol, has sustained an injury, or has a preexisting condition that may require hospitalization. A determination is made by the Youth Center nursing staff to accept the youth or have the youth transported to the hospital for assessment and treatment. In 2001, 444 youth presented some health condition at time of intake that required medical assessment by the Youth Center nursing staff. 82 youth were directed to local hospitals to receive medical clearance prior to admission.

## **PSYCHOLOGY DEPARTMENT**

The purpose of the Psychology Clinic is to provide mental health evaluations for the Juvenile Court at the request of judges, magistrates, probation officers, and both prosecuting and defense attorneys. The evaluations are to determine whether juvenile offenders are competent to stand trial, appropriate for waiver, and to assist in dispositional planning. Occasionally, referrals from the dependency docket request clinic staff to assist in custody matters.

## **COURT REQUESTED SERVICES**

<b>CLINIC SERVICES</b>	<b>TOTAL</b>
PSYCHOLOGICAL EVALUATIONS	281
PSYCHIATRIC EVALUATION	44
EVALUATION FOR WAIVER	78
COMPETENCY TO STAND TRIAL	180
SECOND COMPETENCY EVALUTATIONS	66
THIRD COMPETETENCY EVALUATIONS	2
IQ TESTING	10
CUSTODY EVALUATION	0
EMERGENCY HOSPITALIZATIONS	3
JOB APPLICANTS	107

EMERGENCY REFERRALS IN-HOUSE 2,048

All residents of the Juvenile Court Youth Center are assessed upon admission to determine whether they are high risk for suicidal ideation. The youth are given a high-risk assessment by the Clinic staff to re-evaluate whether that high-risk classification is appropriate. The clinic staff is also required to evaluate Youth Center residents due to psychotic behavior, suicidal attempts and threats, unprovoked assaults, suicidal ideation, behavioral or emotional changes, status downgrade and requests for counseling. If a youth was psychotic, made a suicidal attempt or threat, clinic staff follows up on that youth. Follow-up, collateral visits are crucial in providing beneficial mental health services to the youth.

In 2001, the Psychology Department assessed 1,547 residents for high-risk assessments only. This represents 26% of the total admissions for 2001. In 2000, the Psychology Department also assessed 2,695 residents as Emergency Referrals for the purpose of psychotic behavior, suicidal attempts and threats, unprovoked assaults, suicidal ideation, behavioral or emotional changes, status downgrade and requests for counseling. All residents of the Juvenile Court Youth Center are assessed upon admission to determine whether they are high risk for suicidal ideation. The youth are given a high-risk assessment by the clinic staff to re-evaluate whether that high-risk classification is appropriate. The clinic staff is also required to evaluate Youth Center residents due to psychotic behavior, suicidal attempts and threats, unprovoked assaults, suicidal ideation, behavioral or emotional changes, status downgrade and requests for counseling. If a youth was psychotic, made a suicidal attempt or threat, clinic staff follows up on that youth. Follow-up collateral visits are crucial in providing beneficial mental health services to youth.

Priority I and II (suicidal attempts, psychotic behavior, and suicidal threats)	286
Behavioral/Emotional Changes	115
Status Downgrades	167
Requests for Counseling	308

# **HAMILTON COUNTY JUVENILE COURT**

## **HILLCREST TRAINING SCHOOL**





## HILLCREST TRAINING SCHOOL

---

Hillcrest Training School provides 142 correctional/treatment beds for adjudicated, male adolescents placed by Hamilton County Juvenile Court. The facility is located at 246 Bonham Road, Cincinnati Ohio 45215. The program primarily serves youth between the ages of 12 and 18, who have committed felony offenses. Hillcrest utilizes a standards based management approach that has received state and national recognition. The facility is accredited by both the American Correctional Association and the National Commission on Correctional Health Care. In addition, Hillcrest operates under the full compliance with Department of Youth Services standards and is also an Ohio Department of Mental Health provider. The facility maintains professional memberships with the American Correctional Association, National Association of Juvenile Correctional Agencies, the Juvenile Justice Training Association, the American Association of Suicidology and the Cincinnati Association of Volunteer Administrators.

During 2001, a change in the Classification & Assignment System occurred. Rather than placing incoming residents in cottages with a "Generic Theme", a Primary Treatment Track Approach was developed and implemented. The new system has identified specific treatment tracks for cottages. The tracks include Disruptive Behavior, Sex Offender and Substance Abuse. This was accomplished in January of 2001. Other additions included the inclusion of the Aggression Replacement Therapy for residents and adding a Parent Support Group for youth on Aftercare who have completed the Substance Abuse Program (Strategies for Self Improvement and Change) when in placement.

During this calendar year, a major Physical Plant Project, Cottage Heat Pump Replacement, forced a closing of a cottage each month for a 4 to 6 week period. This created a need to move an entire cottage population to a new location. "Roll Away Beds" were purchased to accommodate the need to maintain the same number of overall treatment beds on campus by utilizing a 13<sup>th</sup> bed if necessary. A reduction in the number of referrals, shortened overall residential placements due to curricula driven treatment programs and the additional use of detention as an intervention did reduce the number of days care. Overall, the number of successful treatment placements in Residential and on Aftercare improved significantly. The number of permanent commitments from Residential to the Department of Youth Services was dramatically reduced.

During this period, Hillcrest completed a site visit by the National Commission of Health Care and was nominated as Facility of the Year by that organization. The facility also successfully completed its 3<sup>rd</sup> American Corrections Association Reaccreditations Audit and was nominated and selected as facility of the year by the Correctional Accreditation Association of Ohio for its professionalism and role modeling.

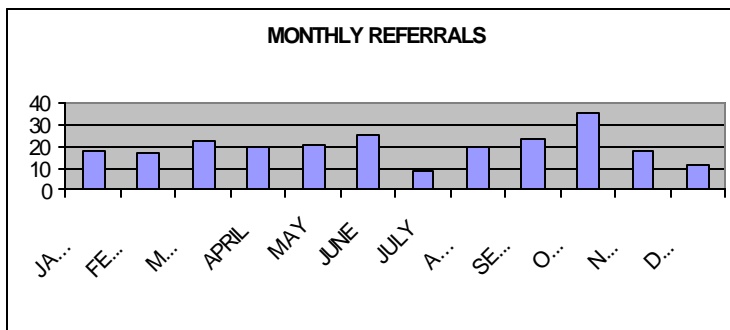
The Charter School continued to prosper during this academic year. The Pre-vocational track produced 16 students who successfully passed the GED and 38 youth were placed in jobs before transitioning into the community. In October, the Charter School extended services to 2 of the Talbert House Programs, Alternatives and Passages.

This included staffing the program with teachers and developing an appropriate and fluid curriculum. In addition, the school has continued to provide a teacher to support the Probation Department's Special GED Project at the Work Detail Department. Proficiency Testing was provided as part of the Department of Education's mandate and 52 students out of 56 passed at least one section of the standardized test. 9 students enrolled in college classes after leaving Hillcrest and 3 students enrolled in vocational programs.

The facility has continued to provide structured recreational activities and an organized sports program. The teams competed in varsity and junior varsity basketball, baseball and track. A 2-week educational and recreational program was facilitated again this year during August, which included a variety of life skill educational offerings, substance free activities and community services.

## TOTAL REFERRALS

JANUARY	18
FEBRUARY	17
MARCH	22
APRIL	20
MAY	21
JUNE	25
JULY	9
AUGUST	20
SEPTEMBER	23
OCTOBER	35
NOVEMBER	18
DECEMBER	11



**Total** 239

RACE OF REFERRALS	NUMBER	PERCENTAGE
White	64	27%
African-American	170	71%
Bi-Racial	5	2%
<b>TOTAL</b>	<b>239</b>	<b>100%</b>

## REFERRAL AVERAGES

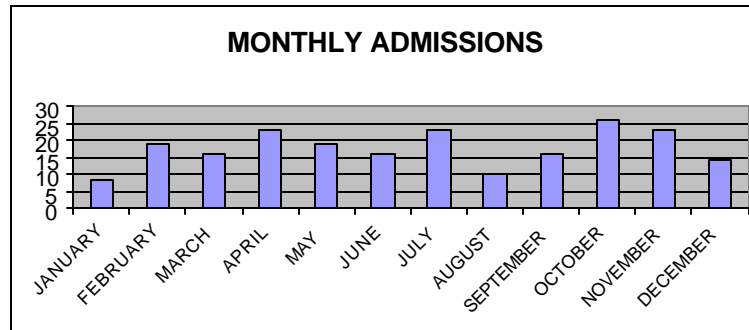
Age	Prior Offenses	Days on Referral
15.8	9	23



## MONTHLY ADMISSIONS

JANUARY	8
FEBRUARY	19
MARCH	16
APRIL	23
MAY	19
JUNE	16
JULY	23
AUGUST	10
SEPTEMBER	16
OCTOBER	26
NOVEMBER	23
DECEMBER	14

**TOTAL 213**



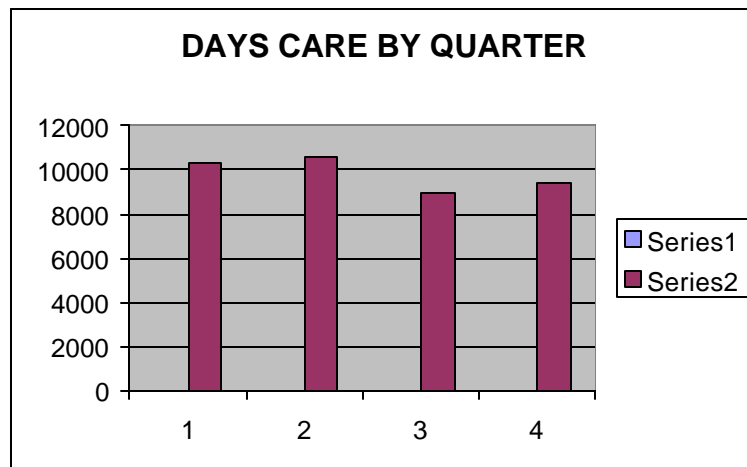
RACE OF ADMISSIONS	NUMBER	PERCENTAGE
White	57	27%
African-American	152	71%
Bi-Racial	4	2%
<b>TOTAL</b>	<b>213</b>	<b>100%</b>

DEGREE OF COMMITTING OFFENSE	NUMBER	PERCENTAGE
Violation of Court Order	40	18.7%
Misdemeanor	37	17.3%
Felony	136	64.0%
<b>TOTAL</b>	<b>213</b>	<b>100%</b>

SUSPENDED COMMITMENTS TO DYS	NUMBER	PERCENTAGE
Admits With SC/DYS	176	83%
Admits Without SC/DYS	37	17%
<b>TOTAL</b>	<b>213</b>	<b>100%</b>

#### QUARTER DAYS CARE

1	10,346
2	10,582
3	8,978
4	9,401
<b>Total</b>	<b>39,307</b>



RESIDENTIAL TERMINATIONS	NUMBER	PERCENTAGE
Aftercare	189	83.6%
PC to DYS	17	7.5%
Other	20	8.9%
<b>TOTAL</b>	<b>226</b>	<b>100.0%</b>

### **2001 AVERAGE LENGTH OF STAY**

	<b>Non-Sex Offenders</b>	<b>Sex Offenders</b>	<b>TOTAL</b>
2001 Total # of Children Served	315	38	353
2001 Total Days Care	32,340	6,967	39,307
2001 Terminations	211	15	226
Average Length of Stay (Days)	178	394	192

<b>AFTERCARE CASELOAD</b>	<b>RELEASES</b>	<b>PC TO DYS</b>
1997	175	34
1998	169	33
1999	172	34
2000	183	30
2001	172	30

## PROGRAMS AND SERVICES UTILIZATION STATISTICS

### PSYCHOLOGY

The Psychology Department conducts psychological intake assessments for each youth admitted. These assessments identify mental health, substance abuse, and psycho-educational issues. A formal diagnosis and treatment recommendations are offered for each youth. The department provides staff training and consultation, individual and group counseling, and crisis intervention. Services include suicide risk assessment and assignment of suicide precautions, management of youth prescribed psychotropic medications and liaison with area mental healthcare providers. The Psychology Department takes a leadership role in coordinating and facilitating intensive cognitive-behavioral treatment groups for substance abuse and anger management problems. The department staffing includes psychology assistants and a licensed psychologist who supervises all psychological services as specified by the Ohio State Board of Psychology.

<b>Mental Health Services</b>	<b>Total</b>
Psychological Evaluations	237
Comprehensive ADHD Evaluations	18
Psychiatric Evaluations	15
Individual Counseling	474
Crisis Intervention Services	32

### SUBSTANCE ABUSE PROGRAM

Varying levels of substance abuse services are available. All youth are assessed for substance abuse issues by the Intake Social Worker, Psychology Department, and Health Care Services. Identified youth are referred to the following programs: (1.) an intensive four month cognitive/behavioral program designed to address the dual issues of alcohol and other drug use and criminal conduct, (2.) an advanced substance abuse education program including restricted home visits, and increased use of urinalysis monitoring, (3.) individual counseling with certified chemical dependency counselor, or (4.) a support group for children of parents experiencing substance abuse problems. Basic substance abuse education services are provided to all residents.

<b>Substance Abuse Services</b>	<b>Total</b>
Intensive Cognitive- Behavioral Groups	638
Advanced Substance Abuse Education Groups	51
Basic Substance Abuse Education Groups	520
Individual Substance Abuse Counseling	820
Relapse Prevention Groups	40
Urinalysis	
Residential	2,771
Aftercare	463

### **SEX OFFENSE-SPECIFIC PROGRAM**

The primary goal of the sex offense-specific program is to prevent re-offending. The program offers an educational and group therapy component. The program also relies on the use of polygraph examinations to verify information and deter further offending. Parental participation is mandatory. Length of stay for sex offenders is 14 to 18 months with an additional period of community supervision and treatment. A family support group is also provided.

<b>Sex Offense-Specific Services</b>	<b>Total</b>
Sex Offender Groups	310
Parent Support Groups	26
Sex Offender Education	44
Relapse Prevention Groups	97
Polygraphs	66

### **DISRUPTIVE BEHAVIOR DISORDERS**

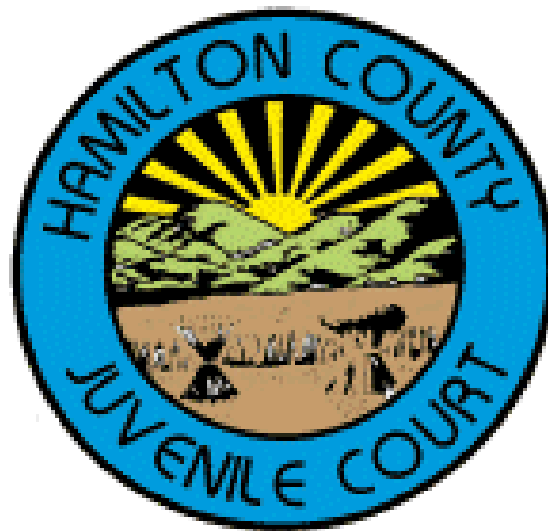
This program focuses on helping youth identify and change antisocial attitudes, values, and beliefs. Youth with a pattern of violating the law and the rights of others, but who have no sexual offenses and no identified substance abuse problems are placed in this program. Treatment interventions include problem-solving, social skills, and anger management groups. Aftercare services include routine curfew checks by the legal authorities.

<b>Disruptive Behavior Services</b>	
Anger Management Groups	385
Problem Solving/ Social Skills Groups	402
Relapse Prevention Groups	35

## **HEALTH SERVICES**

The Health Services Department provides health assessments, daily sick call, and management of special needs cases, medication distribution, immunizations, substance abuse urinalysis, and routine dental care. In-service training is provided for both staff and residents focusing on health and wellness. Health Services oversee the exposure control plan and assist in the monitoring of certain health safety requirements throughout the facility. Additional health services are available through various community clinics and hospitals, as needed. The staff consists of LPNs, a RN supervisor, a visiting physician, a nurse practitioner, and two dentists.

<b>Health Services</b>	<b>Total</b>
Physical Examinations	336
Sick Call	
Pediatrician Visit	617
Nurse Practitioner Visit	280
Nurse Visits	4,004
Dental Services	
Cleaning, X-ray, Restoration	271



**HAMILTON COUNTY JUVENILE COURT  
800 BROADWAY  
CINCINNATI, OHIO 45202**

**PHONE 513-946-9200  
TTD 513-946-9340  
FAX 513-946-9217  
[www.juvenile-court.org](http://www.juvenile-court.org)**