



2000 Annual Report

Hamilton County Juvenile Court

Designed By: Pam Bailey

www.juvenile-court.org



Judge Sylvia Sieve Hendon Judge Thomas R. Lipps
James C. Ray, Jr., Court Administrator

HAMILTON COUNTY JUVENILE COURT

VISION

To achieve excellence in the performance of the Juvenile Court providing quality services for the positive development of children, the safety of the community and the preservation of the family unit.

PRINCIPLES

We believe that all children have inherent value.

We respect all people and appreciate their diversity.

We perform our statutory responsibilities with the highest ethical and professional standards.

Staff is our most important resource. We value personal growth, creativity and leadership, which requires an ongoing program of staff training and development.

We are each accountable for our own area of responsibility and jointly accountable for the effective operation of all Court systems.

We routinely evaluate the effectiveness of our service delivery systems and seek significant improvement.

We promote partnerships to enhance our services to the community and provide leadership for children's issues at the local, state and national level.

VISIT US
PHONE 513-852-8600
TTD 513-852-3920
FAX 513-852-8899
www.juvenile-court.org

SPECIAL LANGUAGE OF JUVENILE COURT

All complaints are framed as a charge of delinquency; i.e., I (Police Officer, Parent, or Guardian) allege that the juvenile is a delinquent child because he/she committed an act that would have been burglary if that act were committed by an adult.

Delinquency	Any crime committed by a juvenile
Unruly	Offense that only a juvenile can commit, i.e. truancy, curfew violation
Admit or Deny	Guilty or Not Guilty
Adjudicate	Finding of Guilt
Dispositions	Sentences
Bind Over	Sent to the adult court system to be tried as an adult
Detention	Predispositional secure holding facility (juvenile jail)
Institution	Juvenile Correctional or Rehabilitation Center
VCO	Violation of Court Order
DYS	Department of Youth Services, Ohio Juvenile Correction System
Youth Center	Hamilton County Juvenile Court's Detention Center

Table of Contents

	PAGE
ORGANIZATIONAL STRUCTURE	
Overview	1-2
Organizational Chart	3
JUVENILE JURISDICTION	
Traffic Complaints Filed	5
Unruly Complaints Filed	5
Delinquency Complaints Filed	6-11
DEMOGRAPHICS	
Age, Race and Gender of Juveniles	12-13
Crimes Against Elderly and handicapped	13
ADULT JURISDICTION	
Dependency, Neglect, and Abuse	14-15
Other Complaints Filed	16
PRETRIAL SERVICES	
Intervention Unit	17
Youth Service Bureau	18
Volunteer Referee Program	18
Youth Center	18
Compass	18
Attendance Program	19
DISPOSITIONS	
Bound Over to the Grand Jury	19
Permanent Commitments to Department of Youth Services	19
Hillcrest	18
Probation	19
Community Based Services	20-22
Work Detail	24
Restitution, Purge Payments, Fines and Court Costs	24
Dismissals	24
DEPARTMENTS	
Judges' Office	25-31
Administrative Services	26-29
Department of Court Services	29
Case Management	30
Magistrates	31
Youth Center	32-38
Hillcrest Training School	39-45

OVERVIEW

Hamilton County Juvenile Court has the responsibility to hear and determine all cases and issues concerning children in Hamilton County. Additionally, the Juvenile Court administers programs and facilities providing for the custody, care and rehabilitation of youth within its jurisdiction.

The types of cases appearing before the Juvenile Court include delinquency cases in which a youth is charged with a crime; dependency cases in which a child has been abused or neglected by a parent or other person; paternity/child support cases to determine parentage and collect support; traffic cases in which the driver is a juvenile; custody cases in which the parties disagree concerning with whom the child should live or visit; adult cases in which there is an issue of contribution to a child's delinquency or failure to send a child to school; and various other cases which impact the best interests of children.

The Court is managed by Administrative Judge Sylvia Sieve Hendon, Judge Thomas R. Lipps and Court Administrator James C. Ray, Jr. and is organized into six main departments. The Department of Administrative Services is responsible for Personnel, Finance, Information Services, Operations, Training, and Security. The Department of Court Services is comprised of the Probation Department, Intervention Unit, and Work Detail. The Department of Case Management is responsible for the Clerk's Office and Docketing Departments. The Magistrates' Department employs 26 magistrates who, along with the two Judges, presides over all matters before the Court. The Youth Center is a 160 bed secure detention center, located in Mount Auburn. The Youth Center holds defendants in secure custody pending court hearings or imposition of disposition. The Hillcrest Training School, located in Springfield Township, is residential treatment for 142 youth, who live, attend school, and receive rehabilitative services as a consequence for violating the law.

The Court also contracts with various placement and program services offered by child care agencies, including inpatient secure diagnostic services, shelter care housing for 30 children, custodial drug treatment centers, day treatment modalities, youth counseling programs, etc. Further, the Juvenile Court along with other official entities, have formed the Family and Children First Council to consolidate efforts, increase efficiency and improve service to families and children.

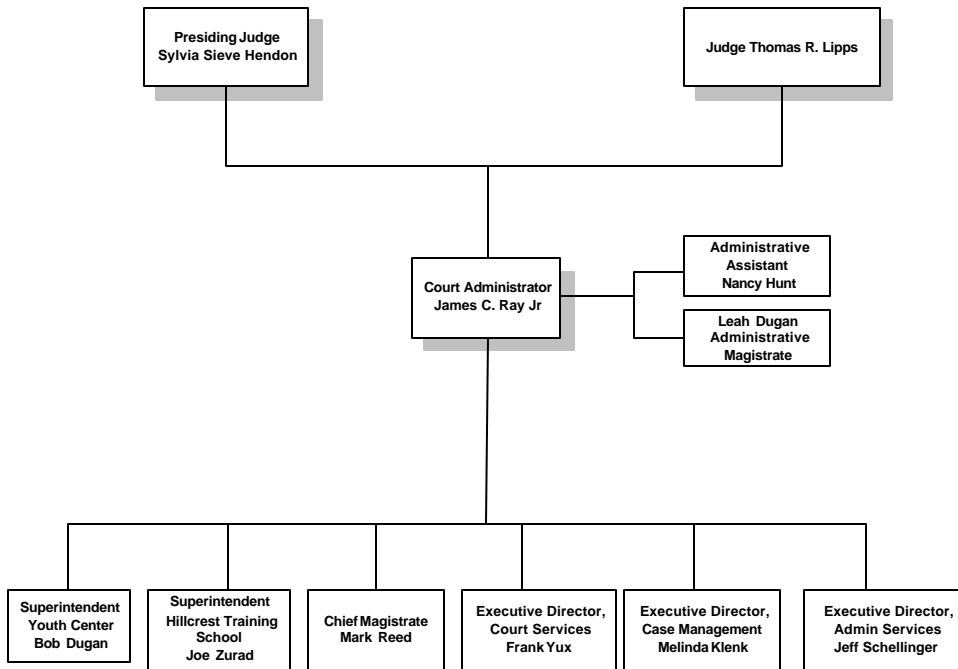
The Juvenile Court is fortunate to enjoy the services of many volunteers who give their time, expertise and money for the enhancement of children. Volunteer programs include over 30 community unofficial hearing officers where members of the legal profession deal with minor infractions, diverting the case from official charges. Volunteer chaplains provide spiritual guidance to youth held in the custody of the Court. An Advisory Council composed of citizens in the community directs services and funds to enhance court programs which cannot be funded by tax revenue to provide needy children with clothes and positive life experiences.

Hamilton County Juvenile Court is considered by the National Council of Juvenile and Family Court Judges to be a national model. Hamilton County programs are praised by the National Judicial and Correctional Associations and in published reports. Judges and officials from all across the world have traveled to Cincinnati to observe the Court. These dignitaries are interested and impressed with the Hillcrest facility, the Youth Center, the dependency system, the truancy project, the unofficial community hearings, the technological abilities, and Court security advancements as well as the many innovative programs and wide range of dispositions available to the magistrates and judges.

The Hamilton County Juvenile Court is blessed with continued support from the county commissioners through general funding, and receives significant assistance through state subsidies and federal grants which allow the Hamilton County Juvenile Court to respond to the critical issues affecting youth in this county with meaningful prevention, intervention, rehabilitation and accountability.

In 2000, the Court began a community court initiative. This program provides an opportunity for communities in Hamilton County to partner with the Court to create an official satellite Juvenile Court in their community. The program is a graduated continuum and extension of the unofficial courts. It allows the Court and the community to partner in meeting the needs of nonviolent low level offenders. Also in 2000, the Court continued to develop its real time case management system (JCMS). The paternity, custody visitation and support jurisdictions were brought online. The preparation work for the integration of dependent, neglect and abuse jurisdiction, probation, work detail, intervention, detention and residential also began in 2000. The Court's Probation Department received accreditation from the American Correction Association. The detention center was selected and participated in the pilot creation of Performance Based Standards for detention accreditation. Hillcrest Training School implemented a new resident classification and assignment system that is being considered as a national best practice model.

Hamilton County Juvenile Court





**Judge Sylvia Sieve Hendon
Administrative Judge**



Judge Thomas R. Lipps



James C. Ray, Jr. Court Administrator

JUVENILE JURISDICTION

TRAFFIC COMPLAINTS FILED

TRAFFIC COMPLAINTS FILED IN 2000.....8,069
TRAFFIC COMPLAINTS FILED IN 1999.....8,523

	2000	1999
Licensing of Motor Vehicle	159	164
Driver License Law	1,119	1,134
Financial Responsibility	4	23
Operation of Vehicle	4,411	4,673
Equipment and Loads	743	767
Motor Vehicle Crimes	101	126
Local Ordinances	1,532	1,636
TOTAL	8,069	8,523

UNRULY COMPLAINTS FILED

Unruly Complaints Filed 2000 2,597
Unruly Complaints Filed 1999 2,600

	2000	1999
Runaway	763	757
Incorrigible	109	116
Incorrigible Out of County	33	7
Unruly Tobacco	151	179
Unruly	19	24
Curfew Violation	619	738
Truancy	836	779
Habitual Truancy	67	0
TOTAL	2,597	2,600

DELINQUENT COMPLAINTS FILED

HOMICIDE	1999	2000	MENACING	1999	2000
Attempt Aggravated Murder	1	2	Aggravated Menacing	184	184
Aggravated Murder Premeditated	1	1	Aggravated Menacing Handicap	0	0
Aggravated Murder-Felony	0	0	Aggravated Menacing Elderly	0	0
Aggravated Murder Premed-Firearm	1	1	Complicity Aggravated Menacing	0	0
Aggravated Murder (commit/attempt)	4	0	Menacing	211	247
Aggravated Murder	1	2	Menacing By Stalking	3	6
Complicity Aggravated Murder	0	2	Menacing Elderly Victim	0	0
Murder	1	1	Attempt Menacing	0	0
Murder— Elderly Victim	0	0	Complicity Menacing	0	0
Complicity Murder	0	0	Total	398	437
Attempt Murder	1	4			
Attempt Murder—Elderly Victim	0	0	KIDNAPPING	1999	2000
Complicity—Attempted Murder	1	0	Kidnapping	4	7
Voluntary Manslaughter	0	0	Kidnapping – Firearm	0	0
Comp Voluntary Manslaughter	0	0	Complicity Kidnapping	0	0
Involuntary Manslaughter	0	0	Abduction	0	5
Negligent Homicide	0	0	Attempt Abduction	0	0
Complicity Negligent Homicide	0	0	Complicity Abduction	0	0
Aggravated Vehicular Homicide	2	2	Unlawful Restraint	1	0
Vehicular Homicide	2	0	Complicity Unlawful Restraint	0	0
Vehicular Homicide Handicap	0	0	Child Stealing	0	0
Vehicular Manslaughter	0	1	Criminal Child Enticement	4	0
Total	15	16	Total	9	12
ASSAULT	1999	2000	EXTORTION	1999	2000
Felonious Assault	212	139	Extortion	2	0
Felonious Assault with Firearm	45	15	Extortion Handicap Victim	0	0
Felon. Assault Peace Officer	2	2	Complicity Extortion	0	0
Felon. Assault Elderly Victim	0	0	Total	2	0
Fel. Assault Handicapped Victim	0	0			
Assault & Battery on Law Officer	0	0	SEXUAL OFFENSES	1999	2000
Complicity Felonious Assault	18	0	Rape	96	112
Attempt Felonious Assault	4	0	Rape with Firearm	1	0
Aggravated Assault	11	11	Rape Elderly Victim	0	0
Agg. Assault on Peace Officer	0	0	Rape Handicap Victim	0	0
Complicity Aggravated Assault	0	18	Complicity Rape	0	0
Aggravated Vehicular Assault	4	4	Attempt Rape	0	6
Vehicular Assault	0	1	Sexual Battery	1	6
Assault	1,051	1,043	Attempt Sexual Battery	0	0
Assault Elderly Victim	0	0	Complicity Sexual Battery	0	0
Assault Handicap Victim	0	0	Gross Sexual Imposition	70	60
Assault Teacher, Admin, Bus Driver	78	87	Gross Sex Impos Elderly Victim	0	0
Assault Corrections Officer	8	2	Gross Sex Impos Handicap Victim	0	0
Assault Peace Officer	23	44	Complicity Gross Sex Imposition	0	0
Complicity Assault	0	3	Attempt Gross Sex Imposition	0	0
Attempt Assault	0	1	Sexual Imposition	21	15
Negligent Assault	5	1	Complicity Sexual Imposition	0	0
Complicity Negligent Assault	0	0	Attempt Sexual Imposition	0	0
Total	1,461	1,371	Importuning	2	1
			Voyeurism	2	1
			Public Indecency	6	14

DELINQUENT COMPLAINTS FILED CON'T

SEXUAL OFFENSES CON'T	1999	2000	ROBBERY CON'T	1999	2000
Felonious Sexual Penetration	0	0	Agg Robbery Firearm/Armed	0	0
Attempt Felon Sexual Penetration	0	0	Aggravated Robbery Armed	0	0
Comp Felon Sexual Penetration	0	0	Complicity Aggravated Robbery	16	25
Total	199	215	Attempt Aggravated Robbery	0	0
			Robbery	155	141
PROSTITUTION	1999	2000	Robbery Elderly Victim	0	0
Soliciting	8	10	Robbery Handicap Victim	0	0
Prostitution	1	0	Complicity Robbery	8	6
Promoting Prostitution	0	0	Complicity Robbery Elderly Victim	0	0
Procuring	0	0	Attempt Robbery	0	0
Total	9	10	Total	317	287
OBSCENITY	1999	2000	BURGLARY	1999	2000
Pandering Obscenity	0	0	Aggravated Burglary	18	17
Illegal Use of Nudity Material	0	0	Aggravated Burglary—Firearm	3	9
Material Harmful to Juvenile	0	0	Agg. Burglary Elderly Victim	0	0
Disseminate Materials	0	0	Agg. Burglary Handicap Victim	0	0
Total	0	0	Agg. Burglary Dwelling	0	0
			Agg Burglary Armed	0	0
ARSON&RELATED OFFENSES	1999	2000	Complicity Aggravated Burglary	1	1
Aggravated Arson	39	35	Complicity Attempt Agg Burglary	0	0
Aggravated Arson Elderly Victim	0	0	Attempt Aggravated Burglary	0	0
Complicity Aggravated Arson	0	0	Agg Burglary Firearm	0	0
Attempt Aggravated Arson	0	0	Burglary	331	291
Arson	41	35	Burglary Elderly Victim	0	0
Arson Elderly Victim	11	0	Complicity	0	10
Complicity Arson	2	0	Attempt Burglary	0	10
Complicity Arson Elderly Victim	0	0	Break and Enter	183	205
Attempt Arson	0	0	Break and Enter—Elderly Victim	22	0
Disrupt Public Service	15	8	Complicity Break and Enter	9	1
Complicity Disrupt Pub Utility	0	0	Attempt Break and Enter	0	0
Vandalism	67	64	Complicity Att Break and Enter	5	0
Vandalism Elderly Victim	0	0	Total	572	544
Complicity Vandalism	0	1			
Attempt Vandalism	0	0	TRESPASS	1999	2000
Criminal Damage	586	724	Criminal Trespass	589	490
Criminal Damage Elderly Victim	0	0	Criminal Trespass—Elderly	0	0
Criminal Damage Handicap Victim	0	0	Complicity Criminal Trespass	1	1
Complicity Criminal Damage	10	2	Trespass Restricted Area	0	0
Attempt Criminal Damage	0	0	Aggravated Trespass	2	7
Criminal Mischief	116	15	Total	592	498
Criminal Mischief Handicap Victim	0	0			
Complicity Criminal Mischief	2	1	SAFECRACKING	1999	2000
Total	889	885	Safecracking	4	6
			Complicity Safecracking	0	0
ROBBERY	1999	2000	Tamper With Coin Machine	16	10
Aggravated Robbery	69	34	Tamper With Coin Machine-Felony	3	1
Aggravated Robbery—Firearm	69	81	Comp Tamper With Coin Machine	0	0
Agg Robbery Elderly Victim	0	0	Tamper With Utility Equipment	0	0
Agg Robbery Firearm Elderly	0	0	Complicity Safecracking	0	0
Agg Robbery Handicap Victim	0	0	Total	23	17

DELINQUENT COMPLAINTS FILED CON'T

	1999	2000		1999	2000
PASSING BAD CHECKS			THEFT CON'T		
Passing Bad Checks	3	3	Complicity Theft	2	0
Passing Bad Checks Felony	0	0	Complicity Theft-Felony	5	0
Take Identity of Another	0	4	Complicity Grand Theft	4	4
Total	3	7	Attempt Grand Theft	3	0
			Attempt Grand Theft Elderly	0	0
MISUSE OF CREDIT CARDS	1999	2000	Theft-Felony	2	0
Misuse of Credit Cards	18	20	Theft-Felony Elderly Victim	0	0
Misuse of Credit Cards Felony	1	0	Theft-Felony Handicap	0	0
Complicity Misuse of Credit Cards	0	0	Complicity Theft-Felony	0	15
Attempt Misuse of Credit Card	0	0	Petit Theft	0	0
Total	19	20	Petit Theft Elderly Victim	0	0
			Complicity Petit Theft	27	22
FORGERY	1999	2000	Complicity Attempt Petit Theft	1	0
Forgery	52	47	Attempt Petit Theft	10	4
Forgery Elderly Victim	0	0	Attempt Petit Theft Elderly Victim	0	0
Complicity Forgery	0	0	Vehicle Theft	0	0
Criminal Simulation	6	7	Vehicle Theft-Elderly Victim	0	0
Total	58	54	Complicity Vehicle Theft	0	0
			Complicity Vehicle Theft- Elderly	0	0
FRAUD	1999	2000	Complicity Attempt Vehicle Theft	0	0
Defraud a Livery			Attempt Vehicle Theft	0	0
Defraud a Livery Felony			Attempt Vehicle Theft-Elderly	0	0
Secure Writings By Deception			Unauthorized Use of Vehicle	103	97
Tamper with Records			Unauthorized Use Vehicle- Elderly	0	0
Trafficking in Food Stamps			Unauthorized Use Vehicle-Felony	0	0
Impersonating Law Officer			Complicity Unauthorized Use Vehicle	2	0
Insurance Fraud			Attempt Unauthorized Use Vehicle	0	0
Illegal Display Law Enforce Emblem			Auto Theft	27	54
Total			Attempt Auto Theft	11	0
			Complicity Attempt Auto Theft	1	0
RECEIVING	1999	2000	Complicity Auto Theft	4	0
Receive Stolen Property	0	172	Attempt Vehicle Theft Elderly	0	0
Receive Stolen Property—Over	159	330	Alter or Forge Token	0	0
Receive Stolen Property Felony	0	0	Unauthorized Use of Property	5	1
Receive Stolen Property Under	337	0	Complicity Unauthorized Use of Property	0	0
Receive Stolen Property Elderly	0	0	Telecommunication Fraud	0	1
Receive Stolen Property Handicap	0	0	Device for Phone Theft	0	0
Complicity Receive Stolen Property	7	3	Trafficking in Food Stamps	0	0
Attempt Receive Stolen Property	0	1	Total	1,921	1,947
Total	503	506			
			OFFENSES AGAINST PEACE	1999	2000
THEFT	1999	2000	Inciting to Violence	1	3
Theft	1,567	1,493	Aggravated Riot	6	2
Theft \$100,000-Drugs-Prior Offense	41	3	Complicity Aggravated Riot	0	0
Theft of Drugs	0	3	Riot	9	4
Grand Theft	106	250	Riot with Four or More	0	0
Grand Theft—Elderly Victim	0	0	Failure to Disperse	4	3
Grand Theft Handicap Victim	0	0	Telephone Harassment	21	24

DELINQUENT COMPLAINTS FILED CON'T

OFFENSES AGAINST PEACE CON'T	1999	2000	OFFENSE AGAINST JUSTICE CON'T	1999	2000
Telephone Harassment Felony	0	0	Fail to Report Crime	2	3
Telephone Harassment Elderly	0	0	Impersonate Officer	2	1
Inducing	90	92	Fail to Comply Signal	0	3
Complicity Inducing Panic	1	0	Escape	34	23
Making False Alarms	27	29	Complicity to Escape	0	0
Complicity Making False Alarms	2	0	Attempt Escape	0	0
Disorderly Conduct	1,435	1,511	Convey Drug into Detention	3	8
Disorderly Conduct—Intoxicated	71	54	TOTAL	1,372	1,253
Misconduct at Emergency	3	1			
TOTAL	1,670	1,723	ATTEMPT, COMPLICITY, CON- SPIRACY	1999	2000
			Conspiracy	2	8
GAMBLING	1999	2000	Attempt	9	24
Public Gaming	38	13	Complicity	38	62
Complicity Public Gaming	0	0	Complicity Felony	4	14
Gambling	4	0	TOTAL	53	108
TOTAL	42	13			
			WEAPONS CONTROL	1999	2000
OFFENSES AGAINST FAMILY	1999	2000	Underage Purchase Firearm	0	0
Endangering Children	15	10	Carrying Concealed Weapon	111	102
Interference with Custody	2	1	Carry Concealed Weapon Felony	9	5
Tend to Cause Delinquency	2	3	Deadly Weapon School Premise	0	0
Domestic Violence	585	469	Weapon in Detention Facility	1	0
Domestic Violence Elderly	0	0	Dangerous Weapons/Fireworks	0	0
Domestic Violence Handicap	0	0	Possess Firearm	0	0
Domestic Violence Felony	111	102	Possess Automatic Weapon	0	0
TOTAL	715	585	Complicity Carry Concealed Weapon	0	0
			Have Weapon Under Disability	19	8
OFFENSE AGAINST JUSTICE	1999	2000	Use Weapon while Intoxicated	0	0
Bribery	4	0	Firearm in Motor Vehicle	0	0
Intimidation	6	8	Manufacture Explosive	0	0
Intimidating Victim, Witness	10	5	Improper Furnish Arms to Minor	1	0
Intimidate Victim-Elderly	0	0	Complicity Discharge Firearm	0	0
Intimidate Victim-Handicap	0	0	Improper Discharge Firearm School	4	0
Retaliation	4	0	Weapon on School Property	25	61
Perjury	0	0	Possess Object Indist from Firearm	0	1
Complicity Tamper with Evidence	0	0	Weapon Unlawful Transaction	1	0
Falsification	221	211	Discharge Firearm Habitation	0	2
Complicity Falsification	0	0	Firearms in Park	0	0
Tampering With Evidence	25	22	Possess Criminal Tools	75	68
Complicity Tamper with Evidence	0	0	Complicity Possess Criminal Tool	0	0
Obstruction Official Business	686	645	Dangerous Ordnance	11	8
Obstructing Justice	21	12	Unlaw Transport Firearm	0	3
Assault Police Dog or Horse	0	0	Firearm Transport Loaded	1	0
Resisting Arrest	308	273	Participation in Criminal Gang	1	0
Resist Arrest-Deadly Weapon	1	0	TOTAL	119	143
Flee and Elude Police Officer	26	17			
Fail to Comply with Police	3	9			
Fail to Comply with Police-Felony	16	13			

DELQUENCY COMPLAINTS FILED CON'T

DRUG OFFENSES	1999	2000	DRUG OFFENSES CON'T	1999	2000
Corrupt with Drugs	0	0	Abusing Harmful Intoxicants	1	3
Convey Contraband in a Jail	0	0	Counterfeit Control Substance Felony	0	0
Convey Contraband Detention	0	0	Corrupt With Drugs	0	0
Trafficking Drugs	0	0	Theft of Drugs	1	0
Trafficking Marijuana	0	0	Illegal Process Drug Document	1	1
Trafficking < Bulk	0	0	Illegal Dispense Drug Samples	1	0
Trafficking Distribute, Ship	0	0	Deception to Obtain Danger Drug	0	0
Trafficking Possess 1-3 x Bulk	0	0	TOTAL	1,416	1,224
Trafficking Sale 1-3 x Bulk	0	0			
Trafficking Possess > 3 x Bulk	0	0	MISCELLANEOUS OFFENSES	1999	2000
Trafficking Sale >3 x Bulk	0	0	Ethnic Intimidation	5	7
Trafficking Harmful Intoxicants	0	0	Complicity Ethnic Intimidation	1	0
Trafficking Counterfeit Substance	4	0	Contaminate Substance-Human Use	1	0
Trafficking Cfn Ctrl Sub near School	0	3	TOTAL	7	7
Agg Trafficking Cnf Ctrl near School	1	2			
Drug Trafficking	9	12	FIREWORKS VIOLATIONS	1999	2000
Drug Trafficking Cocaine	22	23	Fireworks	0	0
Drug Trafficking Marijuana	26	22	Sale and Use of Fireworks	0	0
Drug Trafficking LSD	2	0	Discharge Fireworks	4	4
Drug Trafficking Near School	11	24	Possess Fireworks	4	1
Complicity Drug Trafficking	2	2	TOTAL	8	5
Attempt Drug Trafficking	0	0			
Sale or Trafficking	0	0	NUISANCES	1999	2000
Aggravated Preparation for Sale	49	2	Littering	1	5
Preparation of Drugs for Sell	45	90	TOTAL	1	5
Preparation Near School	10	3			
Aggravated Possession of Drug	5	12	BOXES, DISCHARGE FIREARMS	1999	2000
Possession of Cocaine	179	125	Discharge Firearm	5	0
Possession of Hashish	1	1	TOTAL	5	0
Possession of Heroin	1	1			
Possession of Marijuana	802	679	LIQUOR CONTROL	1999	2000
Possession of LSD	11	2	Alcohol Restrictions	1	7
Possess Dangerous Drug	1	1	Consume Possess Liquor in Vehicle	2	1
Possess Controlled Substance	0	0	Purchase/Consume	333	260
Possess Counterft. Control Subst	43	22	Possession	39	14
Possession of Drugs	13	23	Prohibit Purchase by Minor	0	0
Possess Drug Abuse Instrument	0	1	Alcoholic Beverage in Park	0	0
Possess Drug Paraphernalia	151	161	Minor Liquor Violation	0	0
Possess Dang Drug to Livestock	0	0	Public Intoxication	0	0
Illegal Cultivation Marijuana	1	1	Underage Person	2	14
Make/Sell Counterft. Substance	0	0	Misrepresent to Obtain Alcohol	2	1
Sell/Deliver Dangerous Drug	0	0	Furnish Alcohol to a Minor	2	0
Purchase to Resell Drugs	0	0	TOTAL	381	297
Comp Sale Counterft Control Sub	0	0			
Drug Abuse	23	8	OHIO WILDLIFE VIOLATION	1999	2000
Drug Abuse Minor Misdemeanor	0	0	Ohio Wildlife Violation	1	0
Complicity Drug Abuse	0	0	Cruelty to Animals	0	0
Permit Drug Abuse	0	0	Complicity Cruelty to Animals	0	0

DELINQUENT COMPLAINT FILED

OHIO WILDLIFE VIOLATION CON'T	1999	2000
Vicious Dog	0	0
Ohio Wildlife Violation	0	0
TOTAL	1	0
DRIVER LICENSE LAW	1999	2000
Fictions License, ID Card	1	6
License Violation	2	2
TOTAL	3	8
HABITUAL TRUANCY	1999	2000
Habitual Truancy-Prior Adjudication	0	1
Chronic Truancy	0	191
TOTAL	0	192
VIOLATIONS	1999	2000
Violation of Court Order	34	22
VCO Incurrigible	723	673
VCO Probation	1,078	1,112
VCO Placement	744	758
VCO Runaway	1,097	1,061
VCO Truancy	1,670	1,302
VCO Tobacco	14	59
VCO Work Detail	651	703
VCO Stay Center	187	234
VCO EMU	132	140
VCO Curfew Violation	454	663
Parole Violation	375	337
Probation Violation	0	0
TOTAL	7,159	7,064
MISCELLANIOUS/LOCAL CODES	1999	2000
Miscellaneous Township Codes	165	137
TOTAL	165	137
DELINQUENCY GRAND TOTAL	1999	2000
	20,257	19,710

DEMOGRAPHICS

AGE, RACE, AND GENDER

JUVENILES CHARGED WITH DELINQUENT OFFENSES

AGE	5	6	7	8	9	10	11	12	13	14	15	16	17	18	TOTAL
WHITE MALE	0	2	3	1	15	29	46	83	149	184	306	412	493	36	1,759
WHITE FEMALE	0	0	0	4	1	4	12	33	74	92	143	150	167	6	686
AFRICAN AMER. MALE	0	1	10	24	51	78	127	154	219	322	491	561	552	78	2,668
AFRICAN AMER. FEMALE	0	0	2	4	6	12	29	89	126	206	259	291	255	10	1,289
UNKNOWN AFRICAN AMER. UNKNOWN	0	0	0	0	0	0	0	0	1	0	1	0	0	0	2
BI-RACIAL MALE	0	0	1	0	1	0	0	0	6	2	2	10	5	0	27
BI-RACIAL FEMALE	0	0	0	0	0	1	1	1	1	2	4	4	4	0	18
HISPANIC MALE	0	0	0	0	0	0	0	0	0	2	0	5	1	0	8
HISPANIC FEMALE	0	0	0	0	0	0	0	0	0	2	1	1	2	0	6
ORIENTAL MALE	0	0	0	0	0	0	0	0	1	1	1	1	1	1	6
ORIENTAL FEMALE	0	0	0	0	0	0	0	0	0	0	0	0	0	0	0
UNKNOWN OTHER MALE	0	0	1	2	2	1	2	5	9	9	9	8	8	2	58
UNKNOWN OTHER FEMALE	0	0	0	0	1	1	3	5	2	3	6	3	0	1	25
UNKNOWN/UNKNOWN	0	0	0	0	1	0	6	7	4	6	2	8	3	0	37
GRAND TOTAL	0	3	17	35	77	126	226	377	592	831	1,223	1,454	1,491	134	6,589

JUVENILES CHARGED WITH UNRULY OFFENSES

AGE	5	6	7	8	9	10	11	12	13	14	15	16	17	18	TOTAL
WHITE MALE	1	0	1	0	0	3	3	12	18	27	25	32	34	1	157
WHITE FEMALE	1	0	0	0	0	1	2	8	15	44	40	62	49	0	222
AFRICAN AMER. MALE	0	1	0	1	2	2	8	10	22	27	59	45	59	0	236
AFRICAN AMER. FEMALE	0	0	1	1	0	1	9	15	36	57	73	82	62	0	337
UNKNOWN AFRICAN AMER. UNKNOWN	0	0	0	0	0	0	0	0	0	0	0	0	1	0	1
BI-RACIAL MALE	0	0	0	0	0	0	0	0	0	0	1	0	1	0	2
BI-RACIAL FEMALE	0	0	0	0	0	0	0	2	1	1	2	2	0	0	8
HISPANIC MALE	0	0	0	0	0	0	0	0	0	0	0	0	0	0	0
HISPANIC FEMALE	0	0	0	0	0	0	0	0	0	0	0	1	0	0	1
ORIENTAL MALE	0	0	0	0	0	0	0	0	0	0	2	2	1	0	5
ORIENTAL FEMALE	0	0	0	0	0	0	0	0	0	0	0	0	1	0	1
UNKNOWN OTHER MALE	0	0	0	0	0	0	1	1	3	5	1	2	0	0	13
UNKNOWN OTHER FEMALE	0	0	0	0	0	1	1	1	4	6	5	5	5	0	28
UNKNOWN/UNKNOWN	0	0	0	0	0	0	0	1	1	0	0	2	0	0	4
GRAND TOTAL	2	1	2	2	2	8	24	50	100	167	208	235	213	1	1,015

JUVENILES CHARGED WITH DELINQUENCY & UNRULINESS

AGE	5	6	7	8	9	10	11	12	13	14	15	16	17	18	TOTAL
WHITE MALE	0	0	0	0	1	3	5	5	23	51	66	74	46	0	274
WHITE FEMALE	0	0	0	0	0	0	0	7	19	28	38	25	14	0	131
BLACK MALE	0	0	0	1	3	7	6	31	48	89	83	96	65	1	430
BLACK FEMALE	0	0	0	0	0	2	8	23	37	67	67	50	22	1	277
BI-RACIAL MALE	0	0	0	0	0	0	1	0	0	1	1	1	0	0	4
BI-RACIAL FEMALE	0	0	0	0	0	0	0	0	2	0	1	0	1	0	4
ORIENTAL MALE	0	0	0	0	0	0	0	0	0	0	0	1	1	0	2
HISPANIC MALE	0	0	0	0	0	0	0	0	0	3	0	2	4	0	9
UNKNOWN MALE	0	0	0	0	0	0	0	0	0	1	1	1	0	0	3
UNKNOWN FEMALE	0	0	0	0	0	0	1	0	0	3	0	0	0	0	4
GRAND TOTAL	0	0	0	1	4	12	21	66	129	243	257	250	153	2	1,138

TOTAL MALES	5,656
TOTAL FEMALES	3,038
TOTAL UNKNOWN	48
GRAND TOTAL	8,742

TOTAL WHITE	3,229
TOTAL BLACK	5,240
TOTAL BI-RACIAL	63
TOTAL HISPANIC	17
TOTAL UNKNOWN/OTHER	181
TOTAL ORIENTAL	12
GRAND TOTAL	8,742

CRIMES AGAINST ELDERLY AND HANDICAPPED

The following report, mandated by section 2151.18 of the Revised Code, reflects the number of complaints filed with the court, that allege that a child is a delinquent child, in relation to which the court determines under division (D) of section 2151.27 of the Revised Code that the victim of the alleged delinquent act was sixty-five years of age or older or permanently and totally disabled at the time of the alleged commission of the act.

TYPE OF OFFENSE	PROPERTY	THEFT	VIOLENT
DELINQUENT COMPLAINTS FILED	4	20	19
ADJUDICATIONS	0	12	11
ADJUDICATION & RESTITUTION	0	8	4
COMMITTED TO AN INSTITUTION	0	0	0
TRANSFERRED FOR CRIMINAL PROSECUTION	0	2	3

ADULT JURISDICTION

DEPENDENCY, NEGLECT AND ABUSE

The Dependency Department is responsible for all complaints filed by public and private agencies alleging a child to be dependent, neglected, and/or abused. If a child is placed in the care of an agency, the dependency department must approve and monitor the implementation of the plan. The goals of the statutes that define the operation of the department are to protect children, to respect the rights of parents, and to obtain permanent homes for children in a timely fashion.

	1999	2000
NEW FILINGS	555 cases 999 children	638 cases 1,153 children
FILINGS DISMISSED	142 children	265 children
INITIAL DISPOSITIONS		
Direct Custody to Individual	130 children	115 children
Protective Supervision	143 children	203 children
Temporary Custody	408 children	393 children
Permanent Commitments	91 children	80 children
Long Term Foster Care	40 children	56 children

During 2000, in addition to the 203 children placed under protective supervision as a first disposition, there were 118 children modified from a disposition of agency custody to protective supervision.

Of the 393 temporary commitments granted, 24 were granted on delinquency charges.

During 2000, in addition to the 80 children permanently committed as a first disposition, 82 were modified from temporary commitments or long term foster care to permanent commitment.

During 2000, in addition to the 56 children placed in long-term foster care as a first disposition, 75 children were modified from a temporary commitment, permanent commitment or protective supervision to long-term foster care.

NEW FILINGS WERE DISPOSED OF IN THE FOLLOWING MANNER:

	1999	2000
Dismissals	15%	24%
Direct Custody to Individual	14%	10%
Protective Supervision	15%	18%
Temporary Commitments	42%	36%
Permanent Commitments	10%	7%
Long Term Foster Care	4%	5%

CHILDREN UNDER AGENCY CUSTODY OR SUPERVISION AT YEAR END

	1999	2000
Protective Supervision	162 children	168 children
Temporary Commitments	437 children	387 children
Permanent Commitments	338 children	333 children
Long Term Foster Care	420 children	434 children
TOTAL	1,357 children	1,322 children

At year-end 2000, there were 1,154 children under temporary, permanent and long term foster care to social service agencies in Hamilton County. There were 168 children under court ordered protective supervision. The total number of children under court ordered agency care and supervision totaled 1,322.

OTHER COMPLAINTS FILED

	1999	2000
ADULT MISDEMEANORS		
Failure to Send Child to School	895	1,195
Endangering Children	30	24
Tend to Cause Delinquency of a Minor	72	39
Contribute to Delinquency	0	23
Interference with Custody	1	6
Adult Probation Violation	2	8
Fail to Supervise Child	18	28
Violate Protective Order	0	1
Corruption of a Minor	0	1
PARENT CHILD RELATIONSHIP	1,741	1,271
SUPPORT	2,048	1,877
CUSTODY	1,175	1,159
VISITATION	145	15
HABEAS CORPUS	1	0
PERMISSION TO MARRY	1	1
PROBATE	0	0
PARENTAL BYPASS	0	1

SOME MOTIONS FILED

	1999	2000
CONTEMPT	2,968	3,078
MODIFICATION OF SUPPORT	882	1,131
ADMINISTRATIVE MODIFICATION ORDER	777	582
CSEA REQUEST FOR CHANGE	1,585	1,784

HEARINGS CONDUCTED

	1999	2000
TOTAL HEARINGS CONDUCTED	132,584	130,390
AVERAGE NUMBER OF HEARINGS PER FILING	2.98	3.01

PRE TRIAL SERVICES

INTERVENTION UNIT

The Hamilton County Juvenile Court Intervention Unit, a division of Court Services, serves families in crisis as the result of rebellious and incorrigible behavior being exhibited by children 5-17 years old. Attempts are made to contact the family occur within twenty-four to forty-eight hours of referral, and an appointment is scheduled within 10 days. If the parent or guardian is unwilling/unable to come to the Intervention Unit, a Counselor will provide crisis intervention via the telephone. It is the Intervention Unit's goal to provide ongoing treatment services to at least 10% of all families referred.

The Intervention Unit experienced significant staff turnover in the 2000 calendar year, with 2 of 3 Family Counselors departing to assume positions in the private sector. A significant time lag occurred prior to the hiring of a new Counselor, and one position has remained vacant for 10 months. In addition to the ongoing training of a new Counselor, the Intervention Unit converted to the new JCMS client tracking system on July 1, 2000. This involved a great deal of time planning for conversion and training staff in its use. The training continues on an ongoing basis as the system's features change, and adjustments occur. It should be noted a clean transfer of data from the prior client tracking system used by the Intervention Unit was not possible. Therefore, it may be assumed that the range for statistical error has increased. Being that certain reports are in the process of development/correction, it is impossible to provide raw numbers in some instances. Given all of the aforementioned, the Intervention Unit continues to pursue the goal of efficient, high quality service delivery to all families referred. The staff should be complimented for their professionalism and stamina in their pursuit of this goal in the light of the changes in 2000.

1,249 cases were referred to the Intervention Unit in 2000, which is a decrease of 89 from the previous year. The range of problems presented by the families remains rather constant, yet there has been an increase in complaints being filed against youth less than 12 years of age, as well as those having received prior mental health treatment. Minority populations comprised nearly 63% of the total closures in 2000, and 56% of the total cases closed were females. Of all cases referred and closed, chemical dependency, mental illness, and physical/sexual abuse remain significant factors affecting family functioning.

REFERRAL SOURCE		CLOSURES	
Intake/Unofficial	536	Referred Officially	0
Dependency Referral	1	No follow Through	380
First Time Runaway	507	Intervention Session	514
Magistrate Referral	165	Voucher Services	2
Probation Officer	34	Direct Treatment	153
Unofficial Docket	6	Telephone Intervention	188
		Warrants Open 2+ Months	8
TOTAL	1,249	TOTAL	1,245

Total percentage of families receiving ongoing treatment services - 12%
Total percentage of families employing some form of IU service - 69%

YOUTH SERVICE BUREAU LIAISON PROGRAM

The Citizen's Committee on Youth, Youth Service Bureau Program includes a Court Liaison who serves as an unofficial hearing officer and referral agent to link unofficial unruly and minor misdemeanor youth to community services. This program was established in March of 1975. Supervision of the program is handled jointly by the Citizen's Committee on Youth and the Director of Docketing and Case Management Department, Hamilton County Juvenile Court.

During 2000, a total of 1,834 were served by the Unofficial Hearing Officer. A total of 22 juveniles were referred to the official docket. A total of 1,812 were diverted from the official system.

VOLUNTEER REFEREE PROGRAM

Judge Benjamin S. Schwartz of Hamilton County Juvenile Court initiated the Volunteer Referee Program in 1958. It was the first program of its kind in the country. Attorneys were appointed by the Court as Volunteer Referees to hear unofficial cases of a minor nature within their own community. The program has continued with few modifications over the years, under Judges William J. Morrissey; Olive L. Holmes; David E. Grossman; John P. O'Connor and Sylvia Sieve Hendon, and Thomas R. Lipps.

Cases are referred by local businesses, schools, police and citizens. The advantage of the program is that cases are heard within the youth's own community. Generally the cases are heard in the evening, as it is more convenient for all parties to participate. There is high visibility of the child for enforcing house arrest, work details and other measures of discipline.

In 2000, there were 832 youth served by the Volunteer Referee Program. Of this, 88 youth were referred back to the police or school for further action. A total of 744 juveniles were handled unofficially and diverted from the official system.

YOUTH CENTER

The Youth Center operates a 160-bed secure detention center. In 2000, the Youth Center processed 12,821 youth. More specific information about this facility is detailed in the Youth Center section of this report.

COMPASS DIAGNOSTIC UNIT

COMPASS (comprehensive assessment) is a secure 20-bed facility in which male youth adjudicated delinquent between the ages of 10 and 17 are placed to receive a comprehensive diagnostic assessment/evaluation and a report is presented to the Court to assist in the proper determination of disposition. Youth in the program receive a psychological evaluation, physical exam, substance abuse assessment and drug screen, educational evaluation, and attend family sessions conducted by licensed social workers. Upon completion of the assessments the staff consult with the Court Representative to decide a dispositional recommendation. If follow up services or further correctional measures are needed the Probation Department benefits by having extensive knowledge of the youth and the facilitated referrals for services. The program serves approximately 500 youth annually. The court contracts for these services through the Talbert House.

ATTENDANCE PROGRAM

The Attendance Program is a collaborative effort between the Juvenile Court, Family Services of Cincinnati and the Cincinnati Public Schools to address student absenteeism. Six inner city schools have been targeted, those being: Rothenberg, Vine Street, Oyster, Gamble, Whittier, and Schwab. The Attendance Clerk and Visiting Teacher identify students with poor attendance, and make efforts to address underlying issues without Court involvement. When these efforts fail to produce positive results, the student and parent(s) are cited to Court. Such hearings are held on a weekly basis in the targeted schools. The hearing process, be it informal or official, focuses on the root problems contributing to absenteeism. The ultimate goals are to increase attendance, provide support to families, and interrupt a pattern that could lead to delinquency. The resources of the Court, school and community are utilized to support the families in their effort to correct the problem. The Case Manager, provided by Family Services, works closely with selected families by providing direct services and arranging adjunctive programming/support. The Juvenile Court provides a Magistrate and Case Presenter for the hearings. All six schools that participate in the collaboration have shown improved daily attendance and parent participation

DISPOSITIONS

BOUND OVER TO THE GRAND JURY

In 2000, the Judges bound over 75 juveniles to the Grand Jury, to be tried as adults.

OHIO DEPARTMENT OF YOUTH SERVICES

The number of youth committed to the Department of Youth Services decreased from 239 in 1999 to 197 in 2000. In 2000, the Court revoked parole for 76 juveniles.

HILLCREST

Hillcrest Training School operates 142 correctional/treatment beds for adjudicated delinquent youth placed by the Court. The program primarily serves youth adjudicated of felony offenses and offers a wide range of services, which include an on grounds school, substance abuse and sex offenders programming, and psychological services, to name a few. A total of 264 youth were referred to Hillcrest in 2000. More specific information about this facility is detailed in the Hillcrest section of this report.

PROBATION

Probation, and the work of the Department are defined under Section 2151.14 of the Ohio Revised Code. It is the duty of all department officers to carry out the orders of the Court and serve to protect the interest of the community. It is the responsibility of Probation Officers to use all suitable methods to aid youth on probation to bring about improvement in their conduct. In 2000, the Probation

Department was staffed by the Chief Probation Officer, 2 Deputy Chief Probation Officers, 6 probation Team Supervisors, 29 Probation Officers, 5 Probation Monitors, 4 Victim Impact Officers, and 8 support staff.

In 2000, the Probation Department handled 2,026 investigations referred by the Court, and 1,412 were supervised on probation. Of these cases, 764 successfully completed probation, 264 were referred to Hillcrest Training School for placement, with 222 actually placed, and 83 were permanently committed to the Department of Youth Services.

COMMUNITY-BASED SERVICES

Youth who are involved with the Juvenile Court Probation Department often need additional services that involve community based programs and/or out-of-home placement. Probation officers are responsible for coordinating referrals and providing supervision for youth placed within these programs. The following are facilities where youth are placed, or programs to which youth are referred for services, including a brief description of the program as well as the number of youth placed in/referred to that program in 2000.

Youth, Inc.

Youth, Inc. is a local shelter care facility that accommodates up to 30 youth per day in three houses; one of which serves females. Youth are referred there from the Youth Center (detention) when it is appropriate to use a less restrictive environment that can provide short term treatment and shelter care pending a longer-term placement or a return home. Total number of male youth referred to this program was 454. Total number of female youth referred in was 191.

Alternatives

Alternatives is a 90-day residential drug and alcohol treatment program for males aged 13-18. It is a division of the Talbert House. The Juvenile Court contracts for 5 beds per month, and 25 youth were served; however, an additional 66 youth were served in 2000 under this contract because the youth were subsidized by other funding sources above and beyond the Court's contracted amount. Youth who enter the program are admitting to a substance abuse problem and are willing to enter treatment. The program works with the families of the youth and provides step-down services in the form of intensive outpatient treatment and aftercare.

Compass Diagnostic Unit

COMPASS (comprehensive assessment) is a secure 20-bed facility for male youth between the ages of 10 and 17, who are adjudicated delinquent. COMPASS does a comprehensive diagnostic assessment/evaluation, and presents a report to the Court, to assist with the proper determination of disposition. Youth in the program receive a psychological evaluation, physical exam, substance abuse assessment and drug screen, education evaluation, and attend family sessions conducted by licensed social workers. Upon completion of the assessments, the staff consults with the Court Representative to decide a dispositional recommendation. If follow up services or further correctional measures are needed, the Probation Department benefits by having extensive knowledge of the youth and the facilitated referrals for services. The program serves approximately 500 youth annually. The Court contracts for these services through the Talbert House.

Community Placements

The Juvenile court periodically utilizes various residential placements in the local community to address the multiple needs of some of its client population. Usually these placements are shorter-term (four months or less) and satisfy a need that outpatient services cannot. Several placements used in 2000 were the Tarkio Academy in Missouri, M-Pact Youth Services Group Home, the Lighthouse Independent Living Program, New Beginnings Group Home, and St. Joseph Orphanage Crisis Stabilization Unit. A total of 10 youth were directly referred for placement in 2000.

Lighthouse Family Preservation

Lighthouse Youth Services provides a family outreach component for juveniles on probation who could benefit from a time-limited, structured in home therapy approach. Workers are on call 24 hours a day during the program and work with the entire family system to help strengthen the family unit. The contract allowed for 47 families to benefit from these services in 2000.

Lighthouse Day Treatment

Lighthouse Youth Services provides a structured day treatment program for older male offenders who need assistance educationally and vocationally, as well as with substance abuse issues and other social issues. The program targets many juvenile felony offenders who are at risk of institutional placement or are just stepping down from placement. In 200, the program served 47 Court youth. The program has added a sexual offender treatment component over the past year and specific referrals to this are just beginning to occur.

NORCEN Sexual Offender Group

NORCEN Behavioral Health Systems, Inc. contracts with the Court to provide an ongoing Sexual Offender's Group for youth adjudicated on sexual offenses who are able to be maintained in the community but who need intensive treatment for their behavior. The group can accommodate approximately 7-8 youth at any given time, and due to the lengthy nature of the treatment and the slow turnover that occurs, the Court had 9 youth serviced during 2000. The Court had contracted separately with NORCEN and with Dr. Stuart Bassman's A.W.A.R.E. program, and with therapist Randy Frost to provide some individual (and some group) work with several offenders whose level of functioning or youthful age precludes their participation in the NORCEN group.

Community Outpatient Programs

Occasionally the Court contracts on a case-by-case basis with various local providers for various outpatient treatment services for probation youth. Some examples of this would include individual sexual offenders treatment, group substance abuse treatment, violence prevention program participation, mentoring, and in-home therapy. A total of 39 youth received outpatient services on a contractual basis in 2000.

Creative Connections

This managed care concept wrap around program has been in existence since 1995, but has been under the auspices of Beech Acres (utilizing staff from Lighthouse Youth Services as well) since November 1998. The overall mission and purpose, as well as service operations, remain the same: to purchase, evaluate, and monitor (as well as in some cases provide) a wide variety of services directed to the County's most needy and difficult to serve children and their families. At any given time, there are 83-85 Court youth being serviced by Creative Connections. From the program's inception, a total of 188 Court juveniles have been (or are being) served. Twenty-eight new youth were referred into the program in calendar year 2000. Youth receive a wide array of services ranging from community-based to residential, and remain in the program for a significant period of time (average of 2 years) based on their issues and needs.

Passages

Passages, a division of Talbert House, is a residential treatment program for felony and chronic misdemeanor female offenders. Using a gender-sensitive approach, the Passages program utilizes techniques to address issues of personal/family relationships, accountability, victimization and substance abuse. The program has two components; a 90-day program for chronic status and misdemeanor offenders, and a 180-day program for felony offenders. Passages also offers Intensive Outpatient and Aftercare services for residents. The Juvenile Court contracts for a minimum of 15 beds per month. In 2000, 43 youth were served in residential programming.

SUMA Gender-Specific Groups

The needs of adolescent female offenders are unique to their developmental needs, learning style and socialization process. Therefore, programming designed specifically for this population was developed in August of 2000. The program consists of ongoing groups in an out patient setting that addresses treatment issues specific to females, as well as life skills and criminal thinking errors.

VICTIMS UNIT

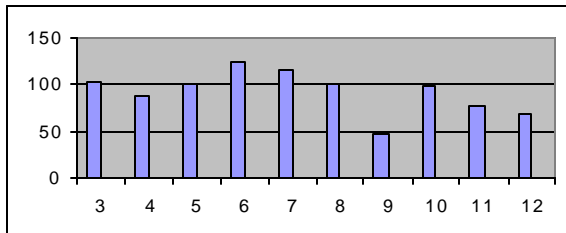
The Victims Unit within the Hamilton County Juvenile Court Probation Department began services in March 2000 as a result of Ohio Revised code 2151.355, which mandates specific services to victims of juvenile crime. These mandated services include: (a) completion of a Victim Impact Statement on all felony crimes and misdemeanor crimes of Negligent Homicide, Vehicular Homicide, Domestic Violence, Assault, Menacing, Sexual Imposition, and Intimidation; (b) providing a general information telephone number for which a victim or designated representative can obtain the current status of a case, (c) providing referral service information; and (d) providing information for the Ohio Victims of Crime Compensation Program.

The Hamilton County Juvenile Court Victims Unit strives to ensure that victims are heard and have meaningful access to the juvenile justice process. The Victims Unit promotes victim education, victim empowerment and the diligent exercise of victim rights under law. The Hamilton County Juvenile Court Victims Unit is committed to treat victims with fairness, respect and dignity and to protect victims from intimidation, harassment or abuse throughout the court process.

In 2000, the Victims Unit prepared 959 Victim Impact Statements of which 925 cases were referred by the Court and 34 were referred by the Department of Youth Services. A total of 912 interviews were conducted by telephone, 5 interviews were conducted during a home visit, and 8 interviews were conducted with the victim being present in the department. Victim Impact Statements were completed for 25 F1 offenses, 59 F2 offenses, 50 F3 offenses, 159 F4 offenses, 185 F5 offenses, 387 M1 offenses, 2 M2 offenses, 6M3 offenses, and 52 M4 offenses.

COURT REFERRED VICTIM IMPACT STATEMENTS

March	103	August	100
April	89	September	48
May	102	October	98
June	125	November	77
July	114	December	69



WORK DETAIL

The Work Detail program is designed for adjudicated youth. The purpose of the Work Detail Program is to provide youth with a productive, short term work experience as a disciplinary measure, while giving the youth an opportunity to learn the principles of accountability and responsibility through various clean up and beautification projects. Youth are referred from Judges, Magistrates, Probation Officers, and Hillcrest staff.

Daily Work Detail	814
Saturday Work Detail	2,443
TOTAL	3,257

RESTITUTION, PURGE PAYMENTS, FINES AND COURT COSTS

RESTITUTION

In 2000, the total restitution collected was \$78,049.73

FINES & COSTS COLLECTED

Fines	\$ 48,665.03
Court Costs	\$193,805.73
RRF & GRF	\$116,451.88
Computer Fees	\$ 69,086.70
Legal Research	\$ 21,189.50
Witness Fees	\$ 1,529.31
Attorney Fees	\$ 7,452.92
Guardian Ad Litem Fees	\$ 2,848.00
Purge Payments	\$156,966.18

DISMISSALS

In 2000 7,481 delinquent, unruly, and traffic cases were dismissed.

**HAMILTON COUNTY JUVENILE COURT
JUDGES' OFFICE**



ADMINISTRATIVE SERVICES

FINANCE DEPARTMENT

The Finance Department, under the supervision of the Court Administrator's Office, is responsible for the preparation, expense and monitoring activity of the Annual County Operating budget and various state grants. Another major responsibility is the maintenance of employee sick and vacation records and production of the bi-weekly payroll. In addition, court ordered restitution is disbursed to the victim and child support for youth in placement is monitored.

	REVENUE	ADJUSTED APPROPRIATION	EXPENDITURES
JUDGES' OFFICE	\$6,789,304.95	\$10,736,383.42	\$9,599,151.68
YOUTH CENTER	\$675,469.43	\$10,423,106.17	\$8,798,500.13
HILLCREST	\$12,958,489.12	\$9,221,341.31	\$8,849,005.61
TOTAL	\$20,423,263.50	\$30,380,830.90	\$27,246,657.42

HUMAN RESOURCES

The Personnel Office/H.R. Department is responsible for the initial interviews and screening of all prospective Court employees. This office administers salary and maintains the personnel files of all Juvenile Court employees.

The Juvenile Court is an Equal Opportunity employer and complies with federal, state, and local laws, as well as the administrative rules and general Hamilton County personnel practices.

The Court, through a series of application steps, attempts to ensure the selection of the best qualified persons for available positions.

In 2000, the Juvenile Court employed 573 people within three divisions. Including part time, seasonal and intermittent employees, there are 229 positions in the Judge's Office, 172 at Hillcrest Training School, and 172 at the Youth Center.

INFORMATION SERVICES

The Information Services Department is comprised of eleven full time employees, four full time contractors, and one part time contractor. The staff is responsible for the design, development, implementation, and support of the following Court systems:

- 530 Personal Computers
- Email and GroupWare messaging system
- 16 network servers and 5 local area networks
- Office automation systems
- Computer applications
- Intra-network and Inter-network between divisions
- Juvenile Court Management System (JCMS)
- Intranet and Internet web sites
- Livescan finger print, palm print, and mugshot system
- EMC Clarion centralized storage system

The following projects were completed in 2000:

- The implementation of a new JCMS component, which captures family intervention information and is used when providing family counseling.
- This new component replaced the Intervention Unit's existing Symantec™ Q&A client database and it provides schedules, contacts, and service information.
- The implementation of a new JCMS component which schedules and Monitors the compliance with workdetail referrals.
- The enhancement of the JCMS criminal and civil case judicial entry screens for Judges and Magistrates.
- The creation of a reporting component within JCMS which generates the Supreme Court Report. This new component replaced the existing manual card file tracking system.
- The implementation of a statewide Ohio Juvenile Detention System (OJDS) containing enhanced features from our Youth Center's Juvenile Detention System.
- The implementation of a Victim's Unit System for the tracking of victims and statistical reporting.
- The implementation of additional functionality and security to our Juvenile Court Employee Database.
- The completion of requirement studies for the development of new JCMS components which addressed the integration of several stand alone systems and databases into the court-wide JCMS system. The stand alone systems included a Dependency Case Management Database, a cost collections FoxPro database, and several Microsoft Access based applications and databases which are currently in use within the Court Services Department.
- Improved internal customer assistance through the refinement of existing Help Line procedures as well as the implementation of new procedures.
- The implementation of the Oasis Help Line call tracking and reporting system.
- The implementation of the SurfControl Internet access control and filtering software.
- Upgraded the network architecture at Hillcrest Training Facility from a 10 megabit to a 100 megabit network.
- The implementation of a student classroom network at the Hillcrest comprised of a dedicated server and 20 personal computers.
- Implemented the network wiring and deployment of personal computers in the student's rooms throughout the cottages at Hillcrest.
- Implemented a battery backup system for the network at Hillcrest that during the event of a power outage will ensure the availability of the network for four hours.
- The implementation of a student class room network at the Youth Center
- Facility comprised of a dedicated server and 12 personal computers.
- Implemented mug shot and palm printing enhancements to the Livescan finger printing system adding the ability to acquire and maintain palm prints and photos of the youth that are detained at the Youth Center.
- Installed 150 new personal computers throughout the court to fully utilize the potential of the available technology, software and applications.
- Implemented the utilization of Palm PC devices to selected areas of the court enabling employees to utilize electronic time management technology.
- Implemented remote network access for Magistrates and Case Managers at the Sharonville and Lockland Community Courts.

- Upgraded all Netware servers from version 4.x to 5.x enhancing the Court's network access and capabilities.
- Implemented a Citrix Metaframe server with dial in security devices that will allow court employees to remotely access applications and data. In the future this server will also be utilized to give Magistrates and Case Managers access to JCMS while holding court sessions at area schools.
- Consolidated all of the Court's email servers into one centralized email server improving the access and support of email applications.
- Completed the analysis and purchase of a centralized storage device needed for the implementation of a new audio/video recording system in the court rooms.
- Resolved an average of 253 help line calls per month based on a total of 3,030 calls allowing the Court's employees to fully utilize the installed technology

OPERATIONS DEPARTMENT

The basic function of the Operations Department is to determine the equipment and supply requirements for the Juvenile Court maintain an inventory of supplies commensurate with the requirements and place all necessary vendor orders. It is the department's responsibility to maintain control of Court equipment by proper record keeping, conducting an annual inventory and monitoring maintenance contracts. The Operations Department handles the majority of the purchasing for the Juvenile Court; therefore, the department is also responsible for authenticating all invoices for payment.

The Operations Department also maintains a Print Shop for the purpose of developing, duplicating and reproducing all the forms that the juvenile Court utilizes. The Operations Department is staffed with 4 full-time members. Along with the Operations Director, there is an Operations Specialist, a Supply Clerk and a Reproduction Clerk.

SECURITY DEPARTMENT

The Security Department is comprised of 12 full-time Law Enforcement Officers (1 full-time Chief of Security, 1 Assistant Chief of Security and 10 Officers). These Officers have been certified by the Ohio Peace Officers Training Commission and have received specific and advanced training in defensive tactics, first aid, CPR/AED, behavioral and psychological aspects of incarceration, crisis intervention, behavior management, suicide prevention, evacuation training, close circuit monitoring, duress alarm, electronic stun device, RCIC, NCIC, NLETS, and LEADS certification and ASP Baton and firearms training, specific to courtroom settings.

The Security Department operates in accordance with the Supreme Court of Ohio, court Security Standards. The Security Department is responsible for providing security and prisoner transports within Juvenile Court at 800 Broadway. They further provide security and prisoner transports to the courtrooms at the Youth Center, and are responsible for providing security at the Work Detail Program. Further, the Security Department is responsible for the day-to-day operation of the court's Evidence Room. The responsibilities include chain of custody, security of evidence, receiving and releasing of evidence, and destruction of evidence/contraband per Court Order.

MISSION STATEMENT: To provide a safe and secure environment for everyone who comes into contact with the court and to ensure that this safety and security is delivered in the best interests of the staff, visitors and those who are incarcerated.

DEPARTMENT GOALS:

1. To comply with the Court Security standards of the Supreme Court of Ohio
2. To comply with the Court Security Certification Standards of the Commission on Accreditation for Law Enforcement Agencies, Inc. (CALEA)

TRAINING AND DEVELOPMENT DEPARTMENT

The Training and Development Department continued the implementation of the training management software application called Registrar. This will enable the three divisions of the court, in a consistent manner, to maintain records on courses, class registrations, and attendance and provide custom reports to employees and management.

The Zenger Miller - Front-Line leadership Management program, offered by the County Training and Development Department, was determined by Juvenile Court Administration to meet the requirements of a core curriculum for management training. The initiative was effective August 1, 2000 and applies to all staff whose responsibilities include supervision, scheduling and evaluation of other Juvenile Court staff.

The Training Department also assumed the responsibility for providing and coordinating the staff training for the Court Services Department that previously was managed by an interdepartmental committee.

The Department continues to absorb additional responsibilities and is expected to grow by one staff person to enable many more learning opportunities to be provided during 2001.

DEPARTMENT OF COURT SERVICES

The Department of Court Services is charged with the implementation of a wide variety of court orders and services directed at intervention and prevention. There are five separate divisions of Court Services. They are Intervention Unit, Mediation, Probation, Specialized Services and Work detail. Services and programs in each of these areas work collaboratively or independently to provide services to youth and their families.

The Intervention Unit utilizes strategic brief therapy for families at risk prior to formal introduction into the court system and accepts referrals from Judges, Magistrates and Probation. Mediation is a new division of Court Services that oversees the expanding service of Juvenile Court in areas of attendance, custody and support.

The Probation Department provides Investigation Reports and traditional probation services to the Court. The Department also provides specialized case care to address specific issues as presented by identified segments of offenders, i.e. Intensive Probation, Sex Offenders, and Females. Specialized Services works closely with Probation in locating services for adjudicated youth who are very young, have substance abuse issues, or a history of mental health problems.

Youth referred to the Work Detail Program perform a wide range of community services. The program is used to hold the youth accountable. The City of Cincinnati Adopt a Block Program, the Zoo, schools, and a variety of parks benefit from the community service. The Work Detail Program has collaborated with HCJC Hillcrest Training School by providing an educational program to assist youth in obtaining their G.E.D. Court Services uses general funds and specialized grants to fulfill the mission of Hamilton County Juvenile Court.

CASE MANAGEMENT

CLERK'S OFFICE

In Hamilton County Juvenile Court, Judge Sylvia Sieve Hendon and Judge Thomas R. Lipps are Ex Officio Clerks of the Court. All cases filed are processed through either the Clerk's Office at 800 Broadway or at the Youth Center Intake Department. The Clerk's Office screens and processes new complaints and motions; sends service to notify parties of court dates; prepares mandated, and internal statistical reports; establishes restitution accounts; and processes financial transactions for restitution, fines, court costs, purges, bond, and other ordered fees.

DEPENDENCY

The Department consists of 8 full time Case Managers who work hand in hand with their individual Magistrate; process and prepare all cases; and field questions or concerns from clients, outside agencies, and other court departments. The Dependency System Tracking Coordinator gathers and enters all information for the computer data system; tracks case activity, identifying problems concerning data entry; and gathers statistical information.

The role of the Dependency Department is to hear cases where child abuse, neglect and/or dependency have been alleged by an agency, primarily the Department of Human Services. The Magistrates hear evidence to determine the validity of the allegations, determine what disposition is in the child's best interest and hold reviews to oversee the management of the case and delivery of services to the family and child(ren). The court focuses on securing a safe, permanent home for children in a timely fashion and strives to keep children with their parents or extended family whenever possible.

DOCKETING

The Docketing and Case Management Department of the Juvenile Court is responsible for docketing and presenting all complaints filed, maintaining and updating all legal records, and maintaining audiocassettes for Magistrates' hearings. The department consists of 38 employees who handle cases involving Delinquency, Unruly, Custody, Visitation, Traffic, Adult Jurisdiction, Child Support, and Dependency. Jobs currently within the department include Docketing Clerks, Clerk Typists, Traffic Clerk, Warrant Clerk, Case Managers, Victim Assistance Case Manager, Unofficial Hearing Officer, Receptionists and School Case Managers.

Each morning 10 dockets are scheduled for Delinquency and Unruly cases. Of those 10 dockets, 5 are scheduled strictly for arraignment (1 at the detention facility, and 4 at 800 Broadway), 5 are scheduled for trials and dispositions. Additionally, an unofficial docket is scheduled daily for first time offenders charged with minor misdemeanor offenses.

The Hamilton Court Juvenile Court and Cincinnati Public Schools designed a program to reduce truancy. With 5 elementary schools participating, the Court provides one Magistrate and one Case Manager daily to hear the dockets for Truancy and Failure to Send Child to School.

To process paternity, support and contempt cases, the Docketing and Case Management Department schedules a daily average of 2 dockets for contempt motions, and 2 dockets for paternity complaints and motions. A motion docket for support issues is scheduled 2 days a week.

MAGISTRATES

There are twenty-six Magistrates in Juvenile Court. The Magistrates are appointed by the Juvenile Judges to preside over the daily case management in Juvenile Court. The powers of a Magistrate are similar to those of a Judge, however, their decisions are subject to review and approval by the assigned Juvenile Court Judge. In Hamilton County, Magistrates determine delinquency, unruly, dependency, custody, paternity and child support matters in Juvenile Court.

Seven Magistrates are assigned to preside over cases involving allegations of dependency, neglect and abuse of children. They are responsible for deciding the temporary and permanent placement of children. The primary goal of the dependency process is to protect the best interest of the child.

The remaining Magistrates preside over delinquency, unruly, traffic, custody, paternity and child support. In delinquency, unruly and traffic matters, Magistrates preside at the plea and trial hearings and determine appropriate dispositions.

Juvenile Court has jurisdiction of paternity, custody and child support when a child is born out of wedlock, or when married parents have not filed for divorce. The Magistrates oversee proceedings to establish the proper parent/child relationship. In addition to establishing paternity, the Magistrates also set child support orders. A Magistrate has the authority to hold a parent in contempt of court and place them before the assigned Judge for imposition of a jail term for failure to pay child support. The Magistrate also decides custody and visitation matters in Juvenile Court. Custody and visitation decisions determine who shall be the residential parent, or custodian of a child and provides for the visitation schedule of a child.

HAMILTON COUNTY JUVENILE COURT

YOUTH CENTER



YOUTH CENTER

In the Year 2000, the Youth Center achieved accreditation from both the American Correctional Association (ACA) and the National Commission on Correctional Health Care (NCCHC.) The Youth Center's ACA Accreditation was completed electronically, a first for the American Correctional Association. Institutions applying for accreditation must comply with standards set forth by the ACA. Youth Center policies, procedures and secondary documentation were compiled, edited, indexed and uploaded into a database application and recorded to a Compact Disc. This new Electronic Accreditation application was then provided to the auditors for review before they actually arrived at the Youth Center. For the first time, auditors were provided the opportunity to assess compliance with a live review of policy, procedure, and secondary documentation from a location other than the facility applying for accreditation. The Auditors then executed an onsite review of any policy or procedures that required further assessment for compliance.

The American Correctional Association and the Commission on Accreditation for Corrections acknowledged this pioneering achievement in electronic accreditation during their winter conference where the Youth Center was officially awarded accreditation.

In June, the Medical Department received initial accreditation from the NCCHC. The mission of the NCCHC is to improve the quality of health care provided in jails, prisons, and detention facilities. This voluntary accreditation recognizes the Youth Center as meeting nationally established and accepted standards for the provision of health services in the following areas: facility governance and administration; managing a safe and healthy environment; personnel and training; health care services support; health care and treatment; health promotion and disease prevention; special needs and services; health records; and medical-legal issues.

The Juvenile Court Youth Center Intake Office is responsible for filing complaints, posting of bonds, and initial processing of all youth brought to the Youth Center. The Intake process includes the decision making process to admit a youth into secure housing, or to divert a youth to his/her legal guardian, or shelter care facility.

INTAKE AND RELEASE PROCESS 12,821

Intake refers to all youth processed at the Youth Center; it is the total number of admissions and diversions. The number of youth processed in the Intake Office increased by 6 % from 12,089 in 1999 to 12,821 in 2000.

ADMISSIONS 6,269

Admission refers to all youth processed into a secure housing unit. The number of youth processed into housing decreased from 6,590 in 1999 to 6,269 in 2000. This represents a 4.9% decrease. The average length of care (9.2 days) and the average daily population (155.2) have reduced the facility days of care (sum of facility daily population) to 57,480 from a 1999 figure of 61,436 a reduction of 3,956 days of care.

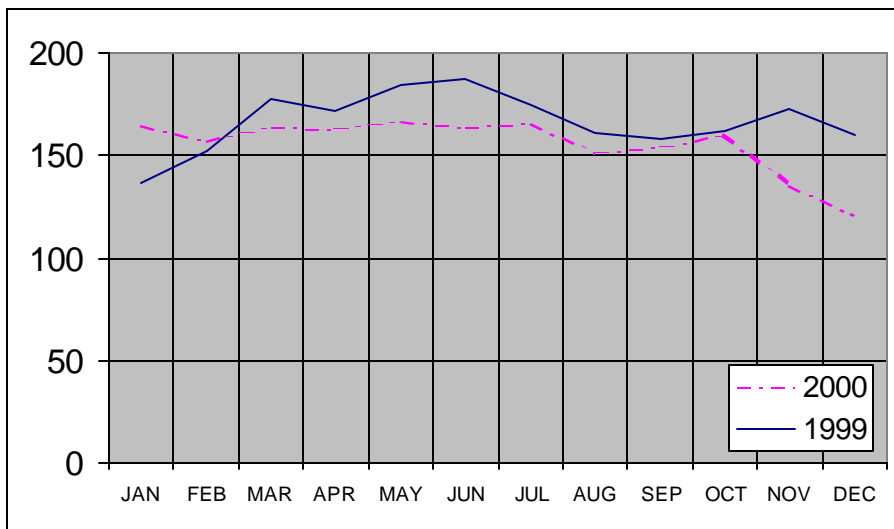
DIVERSIONS 5,605

Diversion refers to any youth returned to the custody of his/her legal guardian, or shelter care facility without being admitted into a secure housing unit. The number of youth eligible for non-secure release, who were successfully diverted, increased from 5,499 in 1999 to 5,605 in 2000. This represents a 1.9% increase.

RELEASES 6,238

Release refers to any youth released to his or her legal guardian or placement facility, after being admitted into secure housing. The number of youth released from housing decreased from 6,448 in 1999 to 6,238 in 2000. This represents a 3.3% decrease.

INTAKE AND RELEASE PROCESS



Facility Population 155.2

The average daily population decreased from 168.1 in 1999 to 155.2 in 2000. This represents a decrease of 7%. The average length of care for 2000 was 9.2 days. Total days cared for 2000 was 57,480.

POPULATION MAKEUP

AGE UPON ADMISSION

	7	8	9	10	11	12	13	14	15	16	17	18	Total Admissions:
TOTAL	2	3	17	61	107	250	601	1,014	1,282	1,516	1,388	28	6,269

PERCENT OF TOTAL ADMISSIONS BY AGE

7	8	9	10	11	12	13	14	15	16	17	18
.03%	.04%	.27%	.97%	1.75%	3.99%	9.58%	16.17%	20.44%	24.18%	22.14%	.44%

RACE / GENDER BREAKDOWN

RACE	MALES % of Population	FEMALES % of Population	TOTAL % Population
African-American	3,325/53.0%	1,099/17.5%	70.5%
Caucasian	1,272/20.88%	489/7.80%	28.09%
Other	63/1%	21/.33%	1.34%
TOTAL	4,460/74.3%	1,609/25.7%	6,269/100%

FACILITY PROCESS ISSUES

Complaints Filed 22,307

The total number of complaints filed in Hamilton County Juvenile Court during 2000 was 22,307. This total represents a 2.5% decrease from a 1999 total of 22,857. The 2000 totals are inclusive of complaints filed at the 800 Broadway Clerk's Office as well as at the Youth Center.

Intervention Reports Filed 2,902

The Youth Center uses Intervention Forms to record any behavior requiring disciplinary action, physical intervention and/or isolation time. Intervention Forms are also completed when Youth Center medical staff sees a youth. Any action requiring an Intervention Form is documented according to category.

<u>BEHAVIOR CLASSIFICATION</u>	
Mildly Disruptive Behavior	65
Severely Disruptive Behavior	1,112
Extremely Disruptive Behavior	1,364
Safety and Security	13
Medical	348
TOTAL	2,902

Physical Intervention 742

Physical Intervention occurred in 742 of the 2,902 behavior management incidents. This represents 25.5% of the total incidents that required physical intervention.

Contraband Confiscated 46

Contraband refers to any item that may be a threat to safety and/or security, or used as a weapon. This includes, but is not limited to; matches, cigarettes, alcohol, drugs, and any item not specifically authorized for possession. During 2000, 46 items were confiscated. 18 drug items were recovered and released to the Cincinnati Police Department for prosecution or destruction. 2 weapons and 26 other types of contraband were recovered.

MEDICAL DEPARTMENT

In July, the Medical Department hired a community-based psychiatrist to provide on-site psychiatric evaluation and treatment. For the balance of 2000, psychiatric evaluations were conducted and treatment provided to 17 residents, which included intensive (twice-weekly) psychotherapy, multidisciplinary and family conferences, and pharmacotherapy.

MEDICAL DEPARTMENT DAILY HEALTH SCREENING

Health screenings are performed on new admissions 24 hours daily. The screening consists of questions to identify immediate health problems, to identify the presence of communicable diseases, and to assess fitness for placement in the general housing population. The medical history elicits information regarding current health concerns, exposure to sexually transmitted infections, psychiatric history (including previous suicide attempts), and substance abuse. The physical examination is performed by the Certified Nurse Practitioners and physicians from Children's Hospital Medical Center (CHMC) Teen Health Clinic. Laboratory testing is done on site and with the cooperation of the Cincinnati Health Department. Medications and treatments are administered by licensed practical nurses. Individual and group health education and counseling is provided. University Hospital, CHMC, and Elm Street Dental Clinic provide emergency services. Outpatient Clinics at University Hospital and CHMC were utilized for non-emergency follow-up care, and includes Trauma, Surgery, Orthopedic, Hand and Oral Surgery. Among medical procedures, tuberculosis skin testing was performed on 3,176 residents. Positive reactions were detected in 75 or 2% of residents who were referred to the Tuberculosis Control Clinic. 543 laboratory specimens were collected for the diagnosis of sexually transmitted infections (STIs). Juveniles treated for STIs numbered 150.

Medical Screenings performed.	6,028
Medical Examinations performed.	3,120
Sick Call Exams.	2,119

DRUG, ALCOHOL, & MEDICAL ASSESSMENTS UPON INTAKE

The Medical Department responds to the Intake Office whenever a youth is suspected of ingesting drugs or alcohol, has sustained an injury, or has a preexisting condition that may require hospitalization. A determination is made by the Youth Center nursing staff to accept the youth or have the youth transported to the hospital for assessment and treatment. In 2000, 197 youth presented some health condition at time of intake that required medical assessment by the Youth Center nursing staff. 49 youth were directed to local hospitals to receive medical clearance prior to admission.

PSYCHOLOGY DEPARTMENT

The purpose of the Psychology Clinic is to provide mental health evaluations for the Juvenile Court at the request of judges, magistrates, probation officers, and both prosecuting and defense attorneys. The evaluations are to determine whether juvenile offenders are competent to stand trial, appropriate for waiver, and to assist in dispositional planning. Occasionally, referrals from the dependency docket request clinic staff to assist in custody matters.

COURT REQUESTED SERVICES

CLINIC SERVICES	TOTAL
PSYCHOLOGICAL EVALUATIONS	232
PSYCHIATRIC EVALUATION	24
EVALUATION FOR WAIVER	80
COMPETENCY TO STAND TRIAL	135
SECOND COMPETENCY EVALUTATIONS	40
THIRD COMPETETENCY EVALUATIONS	2
IQ TESTING	2
CUSTODY EVALUATION	0
EMERGENCY HOSPITALIZATIONS	18
JOB APPLICANTS	112

EMERGENCY REFERRALS IN-HOUSE 2,048

All residents of the Juvenile Court Youth Center are assessed upon admission to determine whether they are high risk for suicidal ideation. The youth are given a high-risk assessment by the Clinic staff to re-evaluate whether that high-risk classification is appropriate. The clinic staff is also required to evaluate Youth Center residents due to psychotic behavior, suicidal attempts and threats, unprovoked assaults, suicidal ideation, behavioral or emotional changes, status downgrade and requests for counseling. If a youth was psychotic, made a suicidal attempt or threat, clinic staff follows up on that youth. Follow-up, collateral visits are crucial in providing beneficial mental health services to the youth.

In 2000, the Psychology Department assessed 1,805 residents for high-risk assessments only. This represents 27% of the total admissions for 2000. 18% for the population on average were being monitored on high risk. In 2000, the Psychology Department also assessed 1,726 residents as Emergency Referrals for the purpose of psychotic behavior, suicidal attempts and threats, unprovoked assaults, suicidal ideation, behavioral or emotional changes, status downgrade and requests for counseling.

Priority I and II (suicidal attempts, psychotic behavior, and suicidal threats)	675
Behavioral/Emotional Changes	239
Status Downgrades	1,318
Requests for Counseling	517

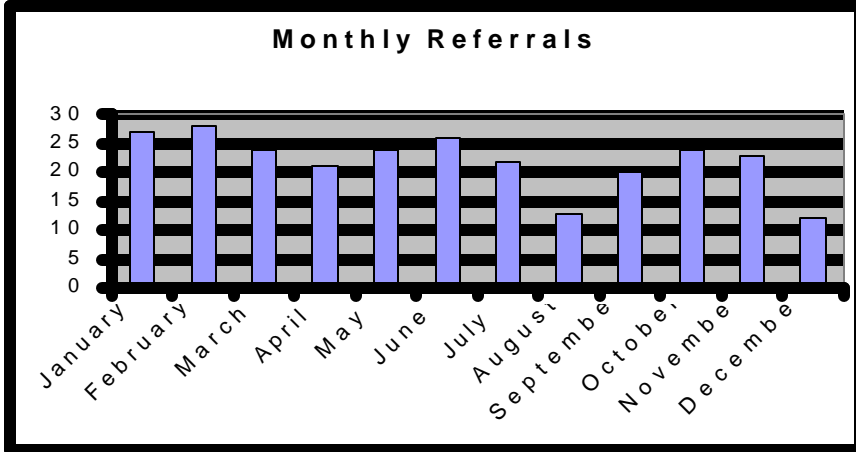
HAMILTON COUNTY JUVENILE COURT

HILLCREST TRAINING SCHOOL



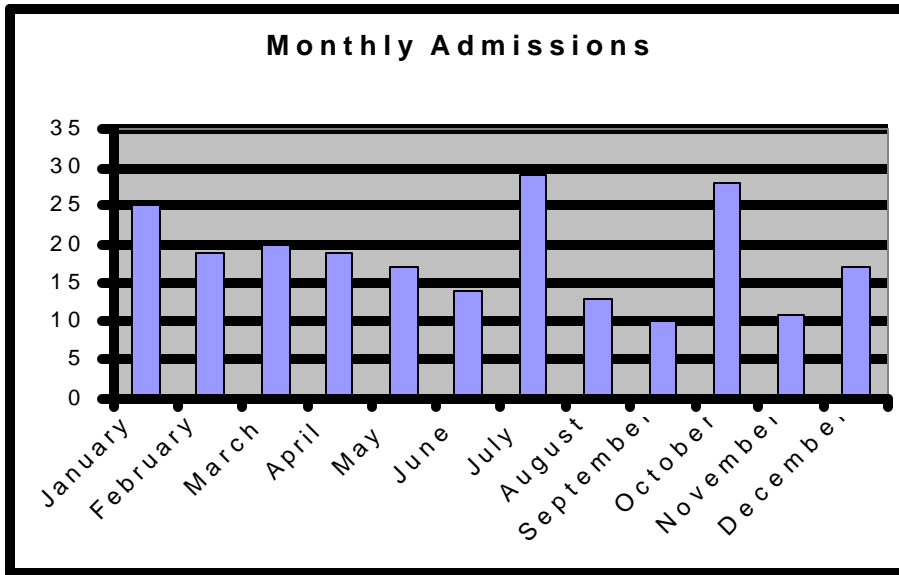
HILLCREST TRAINING SCHOOL

Hillcrest Training School provides 142 correctional/treatment beds for adjudicated, male adolescents placed by Hamilton County Juvenile Court. The facility is located at 246 Bonhan Road, Cincinnati Ohio 45215. The program primarily serves youth between the ages of 12 and 18, who have committed felony offenses. Hillcrest utilizes a standards based management approach that has received state and national recognition. The facility is accredited by both the American Correctional Association, and the National Commission on Correctional Health Care. In addition, Hillcrest operates under the full compliance with Department of Youth Services standards and is also an Ohio Department of Mental Health provider. The facility maintains professional memberships with the National Association of Juvenile Correctional Agencies, the Juvenile Justice Training Association, the American Association of Suicidology and the Cincinnati Association of Volunteer Administrators.



REFERRALS		RACE		MALE		
January	27	White	68			
February	28	African-American	192			
March	24	Bi-Racial	4			
April	21	TOTAL	264			
May	24					
June	26					
July	22					
August	13					
September	20					
October	24	Age	Prior Offenses	Days on Referral		
November	23					
December	12	15.7	9.9	25.7		
TOTAL	264					

Monthly Admissions



ADMISSIONS

January	25
February	19
March	20
April	19
May	17
June	14
July	29
August	13
September	10
October	28
November	11
December	17

TOTAL 222

RACE OF ADMISSIONS

African-American	163
Bi-Racial	2
White	57
TOTAL	222

DEGREE OF COMMITTING OFFENSE Violation of Court Order

Prior Felonies	49	22%
No Prior Felonies	21	9%

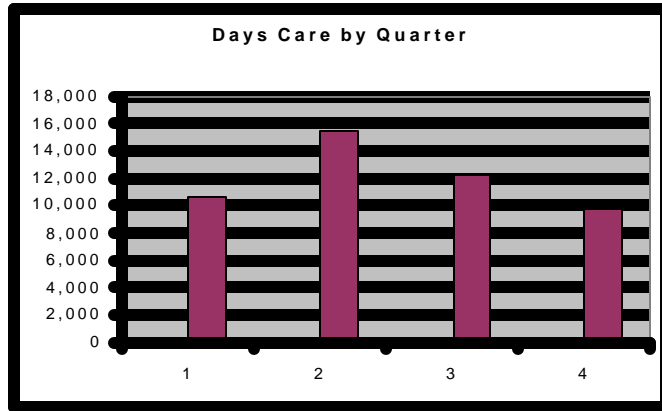
Misdemeanor

Prior Felonies	23	10%
No Prior Felonies	23	10%

Felony 106 48%

TOTAL 222 100%

QUARTER	DAYS CARE
First	10,702
Second	15,447
Third	12,195
Fourth	9,741
TOTAL	48,085



DAYS CARE BY GROUP

	DAYS CARE	POPULATION	AVERAGE STAY
Entire Population	48,085	223	215.6
General Population	40,207	187	215
With Prior Felonies	30,450	142	214.4
Successful Terminations	25,593	107	239.2
PC to DYS	3,738	25	149.5
Other	1,119	10	111.9
Without Prior Felonies	9,757	45	216.8
Successful Terminations	7,677	30	149.5
Detention Terminated	1,866	12	155.5
Other	214	3	71.3
Sex Offenders			
Successful Terminations	5,394	12	449.5
PC to DYS	2,234	7	319.1
Less than 30 Days Care	270	18	15
VCO without Prior Felonies	4,652	23	202.3
VCO with Prior Felonies	7,696	38	202.5
Misdemeanor with Prior Felonies	4,459	24	185.8
Misdemeanor without Prior Felonies	5,114	25	204.6

RESIDENTIAL TERMINATIONS

Aftercare	175
Permanent Commitment to DYS	32
Other	13
TOTAL	220

AFTERCARE CASELOAD

	RELEASES	PC TO DYS
1996	161	34
1997	175	34
1998	169	33
1999	172	34
2000	183	30

SERVICE DELIVERY UTILIZATION

PSYCHOLOGY

The Psychology Department conducts both standard psychological assessments as well as criminogenic assessments for each youth admitted. These assessments identify mental health, risk, need and responsiveness, psycho-educational issues, and provide recommendations for treatment and other services. The department provides staff training and consultation, individual and group psychotherapy, and crisis intervention. Services include suicide risk and assessment of appropriate level of suicide precaution; management of ADHD diagnosed youth, liaisons with area mental health agencies and initiation of clinical case conferences to address the special needs of identified residents. A number of specialty/treatment groups are also available. The department staffing includes psychology assistants, and a licensed psychologist who supervises all psychological services as specified by the Ohio State Board of Psychology.

Mental Health Services	Total
Psychological Evaluations	223
Comprehensive ADHD Evaluations	21
Psychiatric Evaluations	10
Individual Counseling	298
Crisis Intervention Services	268
Anger Management Groups	48
Problem-Solving/Social Skills Groups	3000
*Other	207

*Ancillary research-based programming

SUBSTANCE ABUSE PROGRAM

A wide variety of services are provided to address substance abuse issues. Substance Abuse Education is provided to all residents through weekly sessions within each residential unit. All youth are assessed for substance abuse issues by the Intake Social Worker, Psychology Department, and Health Care Services. Identified youth are referred to the following programs: Strategies for Self-Improvement and Change (an intensive 4 month cognitive/behavioral program designed to address the dual issues of alcohol and other drug use and criminal conduct). The Drug and Alcohol Awareness Program (educational groups, restricted home visits, increased use of urinalysis monitoring), individual counseling with certified counselor, children of alcoholics education and aftercare relapse prevention service groups. Hillcrest utilizes the services of both Talbert House and Norcen Behavioral services to supplement its program.

Substance Abuse Services	Total
Intensive Cognitive- Behavior Groups	695
Advanced Substance Abuse Education Groups	46
Basic Substance Abuse Education Groups	600
Individual Substance Abuse Counseling	667
Relapse Prevention/Maintenance	93
Urinalysis Residential	2722
Aftercare	407

SEX OFFENDER PROGRAM

The primary goal of this program is to prevent re-offending. The program is confrontive and makes extensive use of polygraph examinations to verify information and deter further offending. There is an educational component, group therapy, and an Aftercare component. Parental participation is mandatory. Length of stay for sex offenders is 14 to 18 months with an additional period of supervision and treatment on Aftercare. A family support group is also provided.

Sex Offender Services	Total
Sex Offender Groups	312
Parent Support Groups	156
Sex Offender Education	40
Relapse Prevention/Maintenance	93
Polygraphs	54

HEALTH SERVICES

The Health Services Department provides health assessments, daily sick call, and management of special needs cases, medication distribution, immunizations, substance abuse urinalysis, and routine dental care. In-service training is provided for both staff and residents focusing on health and wellness. Health Services oversee the exposure control plan and assist in the monitoring of certain health safety requirements throughout the facility. Additional health services are available through various community clinics and hospitals, as needed. The staff consists of LPNs, a RN supervisor, a visiting physician, a nurse practitioner, and two dentists.

Health Services	Total
Physical Examinations	465
Sick Call	
Pediatrician Visit	775
Nurse Practitioner Visit	330
Nurse Visits	4182
Dental Services	
Cleaning, X-ray, Restoration	351



2000 Annual Report

Hamilton County Juvenile Court

Designed by: Pam Bailey

[Copyrighted by Hamilton County Juvenile Court](#)

HAMILTON COUNTY JUVENILE COURT
800 BROADWAY
CINCINNATI, OHIO 45202
www.juvenile-court.org